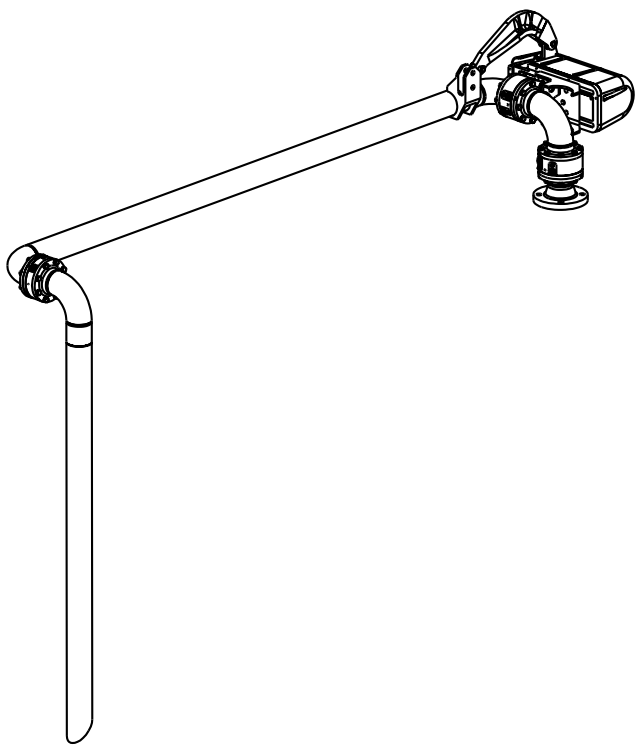
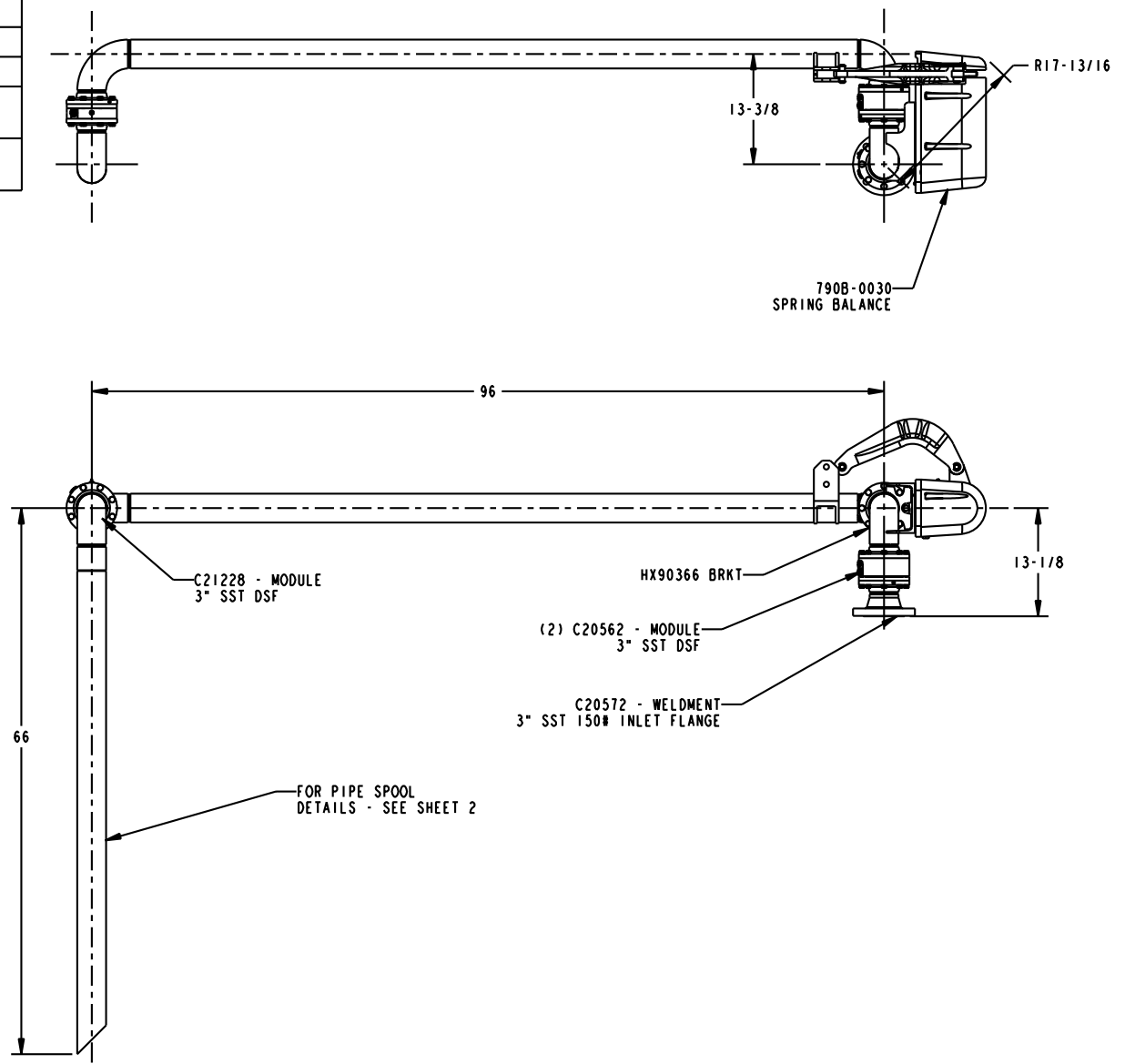


MATERIALS OF CONSTRUCTION	STAINLESS STEEL
SWIVEL JOINT SEALS	VITON
PRODUCT	93% SULFURIC ACID
ESTIMATED WEIGHT	271 LBS
MOMENT LOAD AT SPRING	7,600 IN-LBS
FLANGE GASKETS	KLINGER SIL C5400
TEST PRESSURE	90 PSI
DESIGNED FOR PRODUCT RETENTION	NO
DESIGNED FOR ADDITIONAL WEIGHT BY OTHERS	NO

THIS DRAWING IS NOT TO BE SCALED. FOR ADDITIONAL INFORMATION, PLEASE CONTACT OUR ENGINEERING DEPT.

REVISIONS					
LTR	ECN #	DESCRIPTION	DRAWN	APPROVED	DATE
-	-	-	-	-	-



PO #502430

CONFIDENTIAL THIS DOCUMENT CONTAINS INFORMATION WHICH IS PROPRIETARY TO OPW, AND SHOULD BE PROTECTED ACCORDINGLY.			DESCRIPTION: 3" LOADING ARM, SST, VITON, 96x66		
UNLESS OTHERWISE SPECIFIED TOLERANCES ON DIMENSIONS 3 DECIMALS +/- 0.005 2 DECIMALS +/- 0.015 1 DECIMAL +/- 0.030 ANGLES +/- 1/2 DEG MACHINED SURFACES 125 RMS MAX		SIGNATURES	MO-DA-YR	REV:	PART NUMBER:
		DRAWN: SCK	10/20/08	-	EJ32F-G939
		CHECKED:	-	SIZE: D	SCALE: 0.100
		MATERIAL: SST	WEIGHT: -	-	SHEET 1 OF 2
			Engineered Systems A ROBERT Resources Company Lebanon, Ohio 45036 USA 3D GENERATED DRAWING		