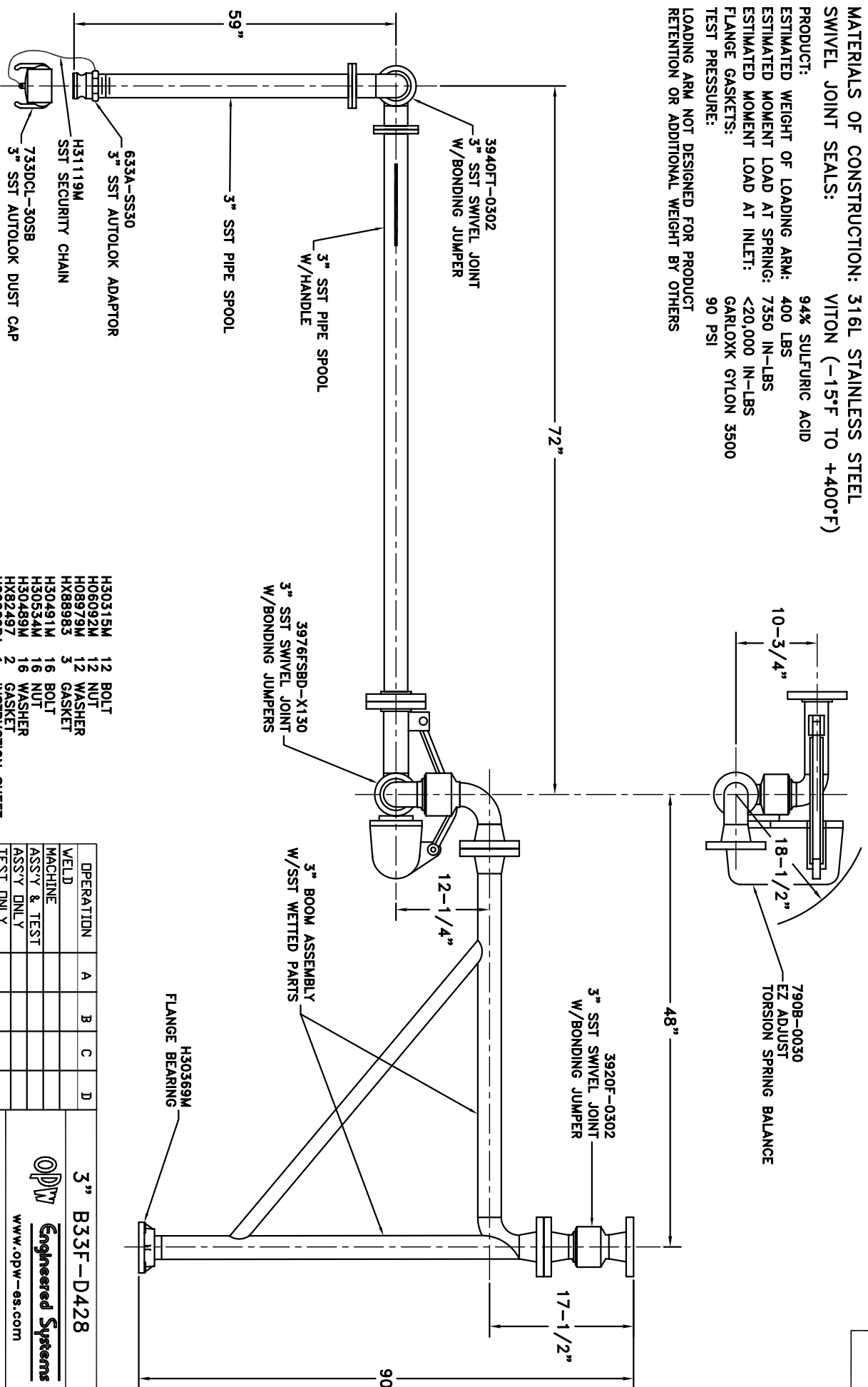


**MATERIALS OF CONSTRUCTION: 316L STAINLESS STEEL  
SWIVEL JOINT SEALS: VITON (-15°F TO +400°F)**

**PRODUCT:** 94% SULFURIC ACID  
**ESTIMATED WEIGHT OF LOADING ARM:** 400 LBS  
**ESTIMATED MOMENT LOAD AT SPRING:** 7350 IN-LBS  
**ESTIMATED MOMENT LOAD AT INLET:** <20,000 IN-LBS  
**FLANGE GASKETS:** GARLOXX GYLON 3500  
**TEST PRESSURE:** 90 PSI  
**LOADING ARM NOT DESIGNED FOR PRODUCT RETENTION OR ADDITIONAL WEIGHT BY OTHERS**



- H30315M 12 BOLT
- H08092M 12 NUT
- H08979M 12 WASHER
- HX88983 3 GASKET
- H30491M 16 BOLT
- H30534M 16 NUT
- H30489M 16 WASHER
- HX82497 2 GASKET
- H02209PA 1 INSTRUCTION SHEET
- H30446M 1 ALUM. NAME PLATE
- H30447M 2 SST TIE BANDS

OPERATION	A	B	C	D
WELD				
MACHINE				
ASSY & TEST				
ASSY. ONLY				
TEST ONLY				
PAINT				

1. HIGHLIGHT RECD. OPERATIONS PER ASSY.  
 2. RECORD CLOCK NO. WHEN COMPLETE.

**3" B33F-D428**

**Engineered Systems**
  
 www.opw-es.com

DRAWN BY: BUB  
 CHECKED BY: [blank]  
 QUOTE NO. 17070

SCALE: NONE  
 DATE: 8/18/06  
 DRAWING NO. SK17070A1

R.H.