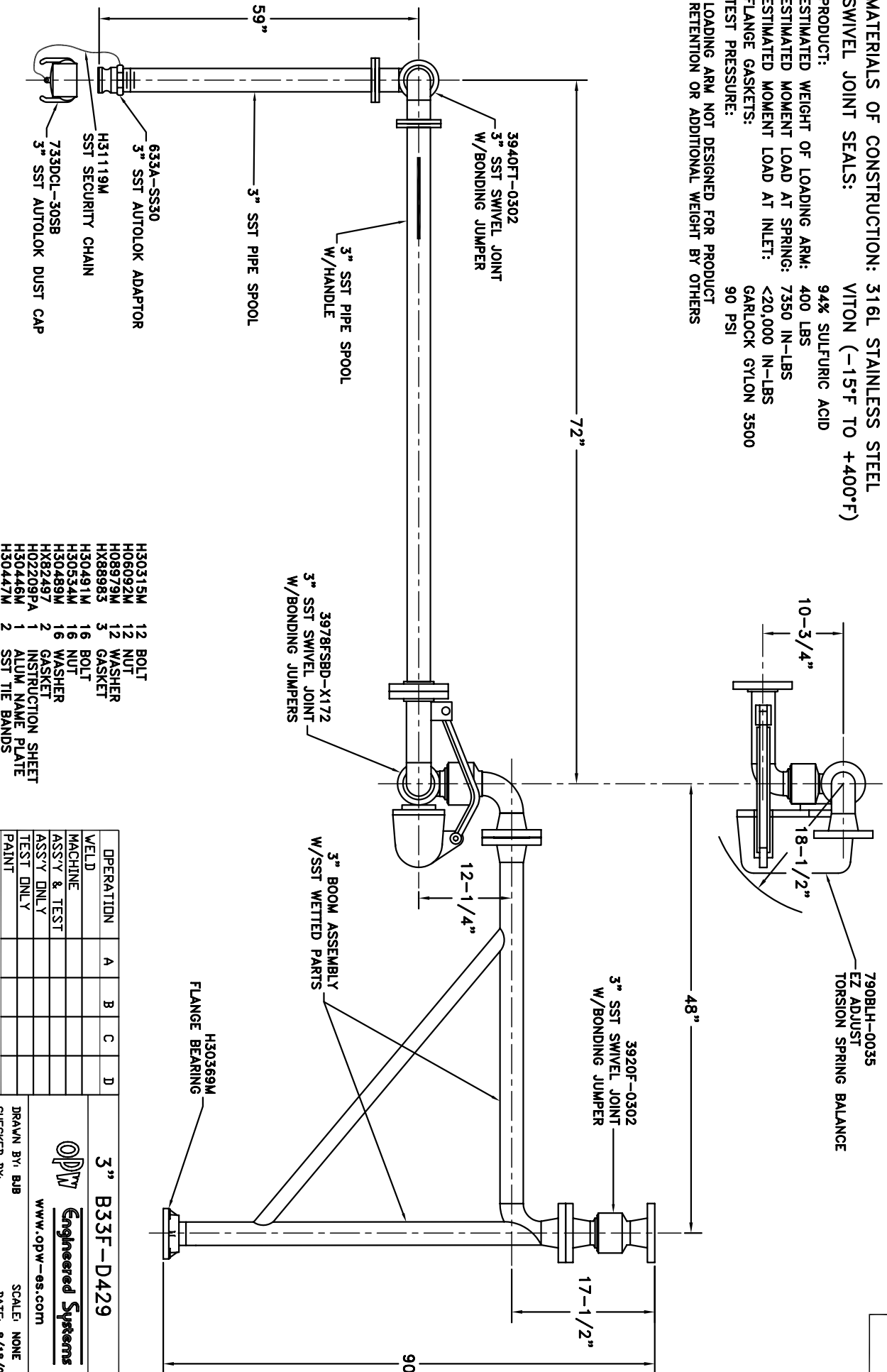


MATERIALS OF CONSTRUCTION: 316L STAINLESS STEEL
SWIVEL JOINT SEALS: VITON (-15°F TO +400°F)

PRODUCT: 94% SULFURIC ACID
ESTIMATED WEIGHT OF LOADING ARM: 400 LBS
ESTIMATED MOMENT LOAD AT SPRING: 7350 IN-LBS
ESTIMATED MOMENT LOAD AT INLET: <20,000 IN-LBS
FLANGE GASKETS: GARLOCK GYLON 3500
TEST PRESSURE: 90 PSI
LOADING ARM NOT DESIGNED FOR PRODUCT RETENTION OR ADDITIONAL WEIGHT BY OTHERS



- H30315M 12 BOLT
- H06G092M 12 NUT
- H08979M 12 WASHER
- HX88983 3 GASKET
- H30491M 16 BOLT
- H30534M 16 NUT
- H30489M 16 WASHER
- HX62497 2 GASKET
- H02209PA 1 INSTRUCTION SHEET
- H30446M 1 ALUM NAME PLATE
- H30447M 2 SST TIE BANDS

OPERATION	A	B	C	D
WELD				
MACHINE				
ASSY & TEST				
ASSY ONLY				
TEST ONLY				
PAINT				

1. HIGHLIGHT RECD OPERATIONS PER ASSY.
 2. RECORD CLOCK NO. WHEN COMPLETE.

3" B33F-D429

L.H.

OPW
Engineered Systems
 www.opw-es.com

DRAWN BY: BUB
 CHECKED BY: []
 SCALE: NONE
 DATE: 8/18/06
 QUOTE NO. 17070 DRAWING NO. SK17070A1