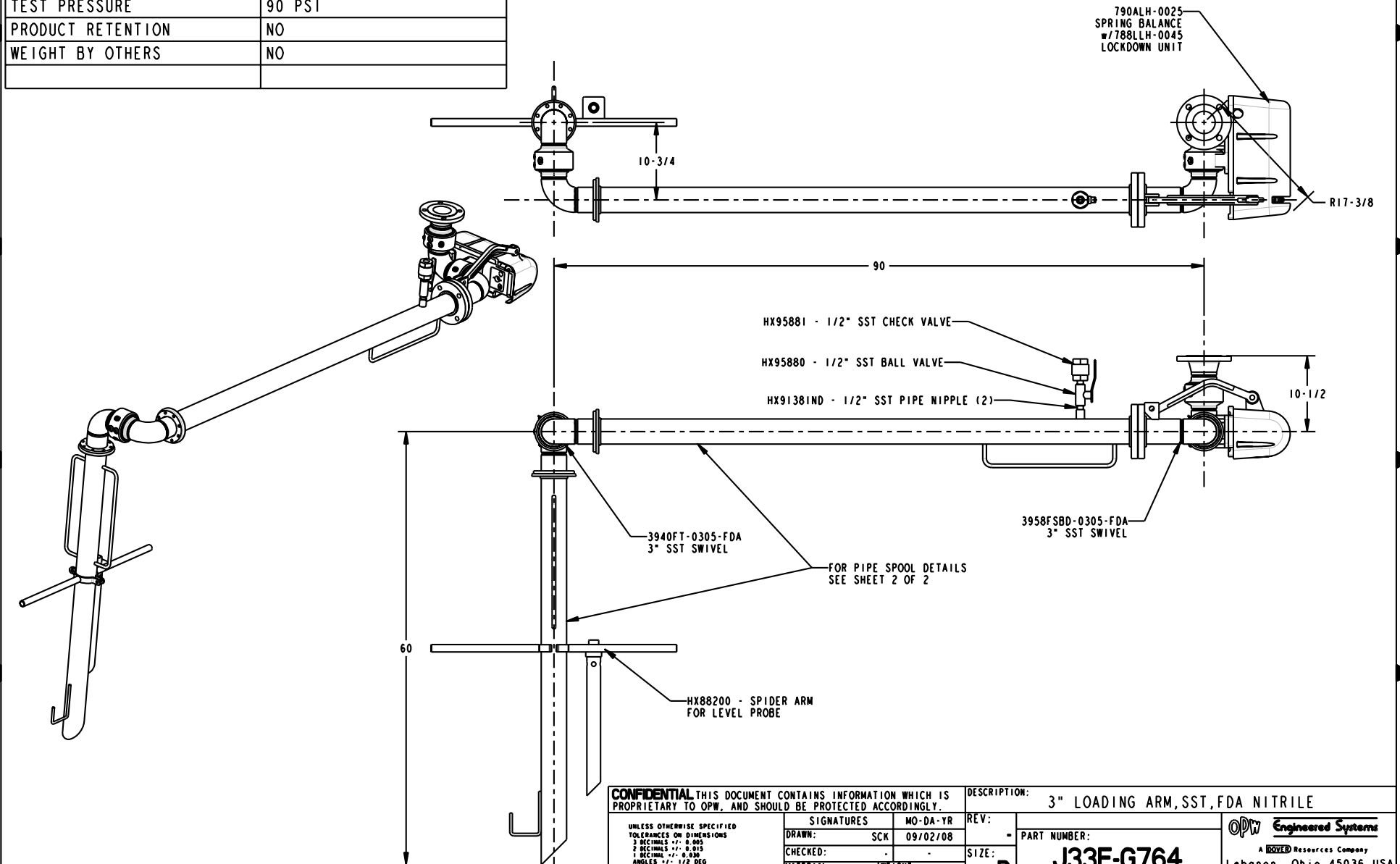


MATERIALS OF CONSTRUCTION	SST
SWIVEL JOINT SEALS	FDA NITRILE
PRODUCT	CORN SYRUP
ESTIMATED WEIGHT	210 LBS
MOMENT LOAD AT SPRING	5,900 IN-LBS
MOMENT LOAD AT INLET	N/A
FLANGE GASKETS	KLINGER SIL C5400
TEST PRESSURE	90 PSI
PRODUCT RETENTION	NO
WEIGHT BY OTHERS	NO

THIS DRAWING IS NOT TO BE SCALED. FOR ADDITIONAL INFORMATION, PLEASE CONTACT OUR ENGINEERING DEPT.

REVISIONS					
LTR	ECN #	DESCRIPTION	DRAWN	APPROVED	DATE
-	-	-	-	-	-



**CONFIDENTIAL** THIS DOCUMENT CONTAINS INFORMATION WHICH IS PROPRIETARY TO OPW, AND SHOULD BE PROTECTED ACCORDINGLY.

UNLESS OTHERWISE SPECIFIED  
 TOLERANCES ON DIMENSIONS  
 3 DECIMALS +/- 0.005  
 2 DECIMALS +/- 0.015  
 1 DECIMAL +/- 0.030  
 ANGLES +/- 1/2 DEG  
 MACHINED SURFACES 125 RMS MAX

SIGNATURES		MO-DA-YR
DRAWN:	SCK	09/02/08
CHECKED:	-	-
MATERIAL:	SST	WEIGHT:

DESCRIPTION: 3" LOADING ARM, SST, FDA NITRILE

REV:	-	PART NUMBER:	J33F-G764
SIZE:	D	SCALE:	0.050
SHEET 1 OF 2		3D GENERATED DRAWING	

**OPW** **Engineered Systems**  
 A **ROBERT** Resources Company  
 Lebanon, Ohio 45036 USA