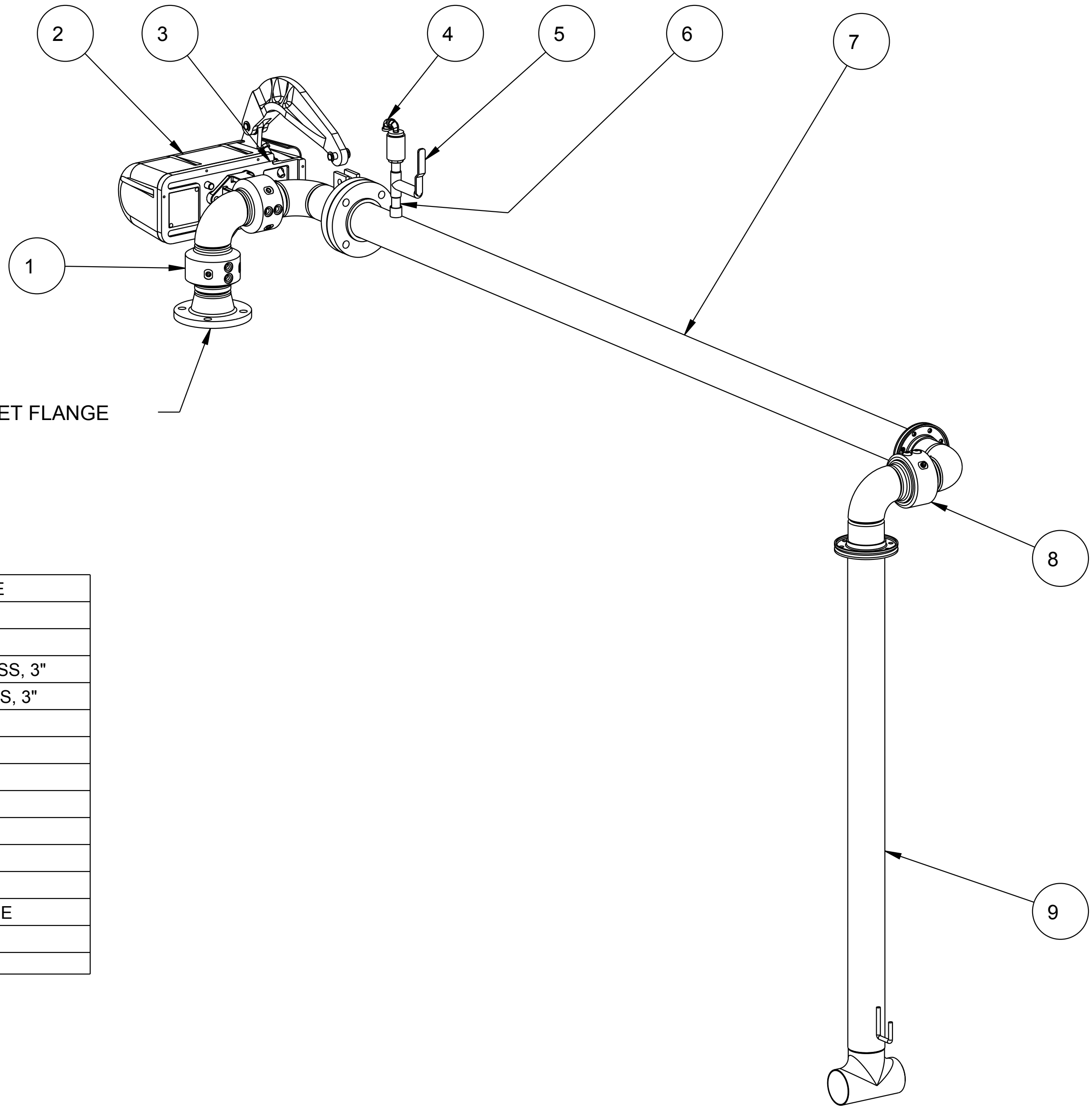


MATERIALS OF CONSTRUCTION	316L STAINLESS STEEL
SWIVEL JOINT SEALS	FDA NITRILE
PRODUCT	CORN SYRUP
ESTIMATED WEIGHT	200 LBS
MOMENT LOAD AT SPRING	9450 IN-LBS
MOMENT LOAD AT INLET	IN-LBS
FLANGE GASKETS	GARLOCK 5500
TEST PRESSURE	90 PSI
PRODUCT RETENTION	NO
WEIGHT BY OTHERS	NO

THIS DRAWING IS NOT TO BE SCALED. FOR ADDITIONAL INFORMATION, PLEASE CONTACT OUR ENGINEERING DEPT.

REVISIONS					
LTR	ECN #	DESCRIPTION	DRAWN	APPROVED	DATE
-	-	-	-	-	-



14	1	EA	LADOC-STD	LOADING ARM, NAME TAG AND HARDWARE
13	1	EA	HX99273	FLG GSKT, GARLOCK 5500, 150#, 3"
12	2	EA	HX99274	FLG GASKET, GARLOCK 5500, TTMA, 3"
11	2	EA	FHK-NG-TTMA-03-SS	FLANGE HARDWARE KIT, NO GSKT, TTMA, SS, 3"
10	1	EA	FHK-NG-150-03-SS	FLANGE HARDWARE KIT, NO GSKT, 150#, SS, 3"
9	1	EA	N/A	3" SST DROP PIPE SPOOL
8	1	EA	3940FT-0305-FDA	3" SWIVEL, SST
7	1	EA	N/A	3" SST PIPE SPOOL
6	1	EA	H30660M	PIPE NIPPLE, SST, 1/2" X 2"
5	1	EA	HX95936	BALL VALVE, SST, STD PORT, FNPT, 1/2"
4	1	EA	489-0050	VACUUM BREAKER, SST, 1/2" MNPT
3	1	EA	788LLH-0045	LOCKDOWN UNIT, LEFT HAND
2	1	EA	790CLH-0045	LEFT HAND EZ ADJUST 'C' SPRING BALANCE
1	1	EA	3956FSB-0305-FDA	3" SWIVEL, SST
ITEM	QTY	UM	PART NUMBER	DESCRIPTION

3" 150# R.F. INLET FLANGE

<p>CONFIDENTIAL - THIS DOCUMENT CONTAINS INFORMATION WHICH IS PROPRIETARY TO OPW, AND SHOULD BE PROTECTED ACCORDINGLY.</p>			<p>DESCRIPTION: 3" TOP LOADING ARM, UFLH</p>		
SIGNATURES		MO-DA-YR	REV:	PART NUMBER:	
DRAWN: BJB		11/24/10	-	J32F-J377	
CHECKED: -		-	SIZE: D	SCALE: 0.120 SHEET 1 OF 4	
MATERIAL:		WEIGHT: -	<p>OPW Engineered Systems <small>ALDOVER Resources Company</small> Lebanon, Ohio 45036 USA 3D GENERATED DRAWING</p>		

