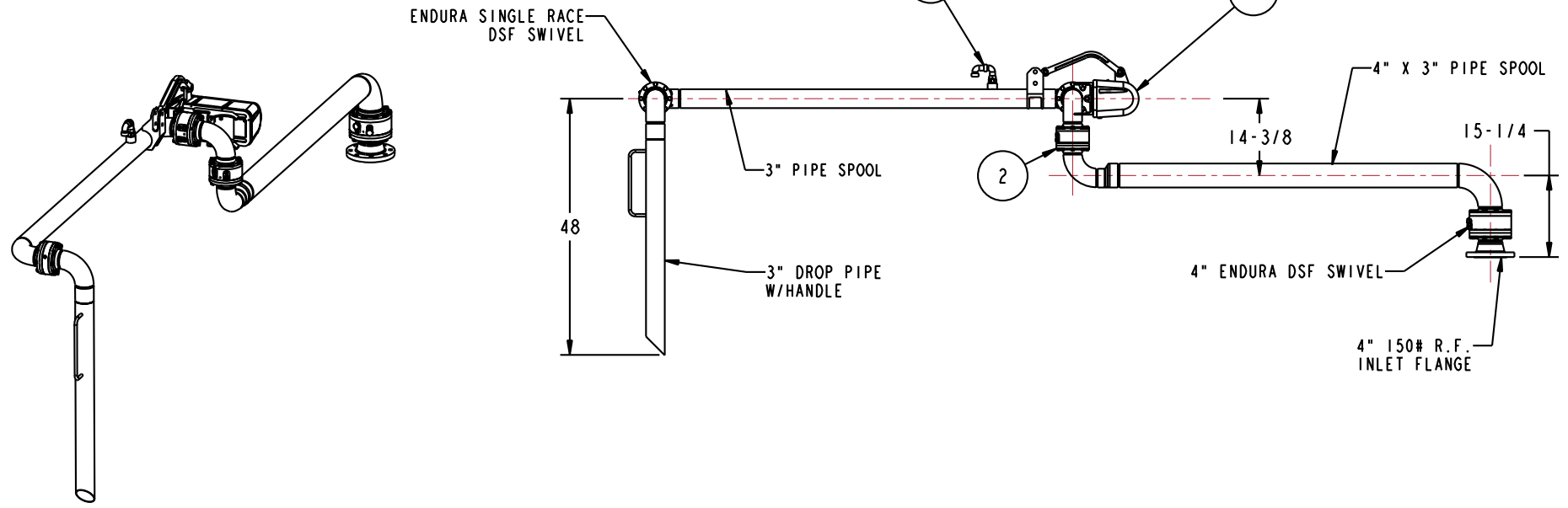
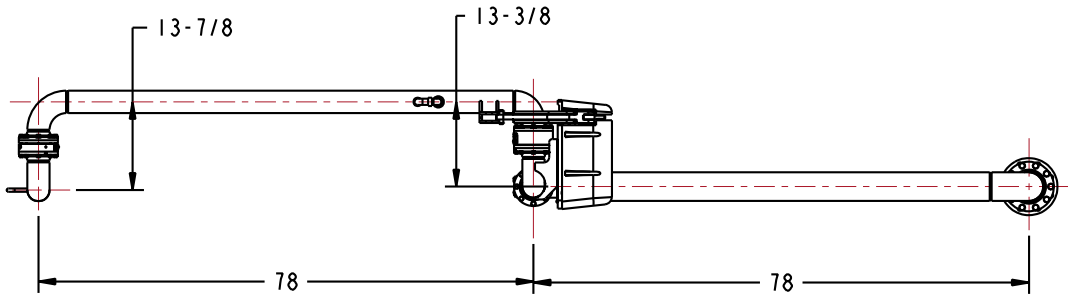


MATERIALS OF CONSTRUCTION	316L STAINLESS STEEL
SWIVEL JOINT SEALS	VITON GFLT
PRODUCT	CAUSTIC / WATER
ESTIMATED WEIGHT	400 LBS
MOMENT LOAD AT SPRING	5650 IN-LBS
MOMENT LOAD AT INLET	27,850 IN-LBS
TEST PRESSURE	90 PSI
DESIGNED FOR PRODUCT RETENTION	NO
ADDITIONAL WEIGHT BY OTHERS	NONE

3	1	EA	790A-0020	EZ ADJUST TORSION SPRING BALANCE
2	1	EA	8978FW-G285	4" X 3" SWIVEL ASSY, ENDURA DSF, SST
1	1	EA	489-0060	1" SST VACUUM BREAKER
ITEM	QTY	UM	PART NUMBER	DESCRIPTION

THIS DRAWING IS NOT TO BE SCALED. FOR ADDITIONAL INFORMATION, PLEASE CONTACT OUR ENGINEERING DEPT.

REVISIONS					
LTR	ECN #	DESCRIPTION	DRAWN	APPROVED	DATE
-	-	-	-	-	-



- H02209PA 1 INSTRUCTION SHEET
- H30446M 1 ALUM NAME PLATE
- H30447M 2 SST TIE BANDS

CONFIDENTIAL THIS DOCUMENT CONTAINS INFORMATION WHICH IS PROPRIETARY TO OPW, AND SHOULD BE PROTECTED ACCORDINGLY.

UNLESS OTHERWISE SPECIFIED
 TOLERANCES ON DIMENSIONS
 3 DECIMALS +/- 0.005
 2 DECIMALS +/- 0.015
 1 DECIMAL +/- 0.030
 ANGLES +/- 1/2 DEG
 MACHINED SURFACES 125 RMS MAX

DESCRIPTION: 4" X 3" LOADING ARM

SIGNATURES	MO-DA-YR	REV:	PART NUMBER:
DRAWN: BJB	3/19/08	-	EGT32F-G284
CHECKED:	-	SIZE: D	SCALE: 0.070
MATERIAL:	WEIGHT:	-	SHEET 1 OF 3

OPW **Engineered Systems**
 A **ROTEX** Resources Company
 Lebanon, Ohio 45036 USA
 3D GENERATED DRAWING