

A

B

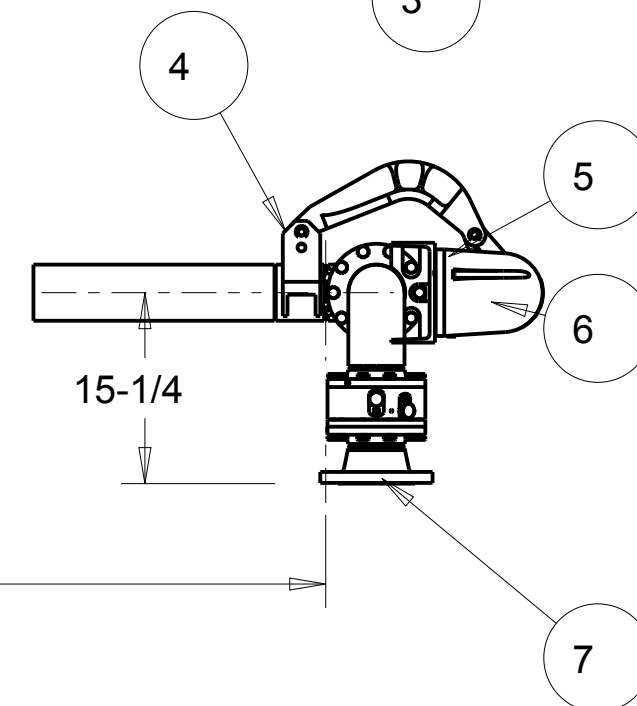
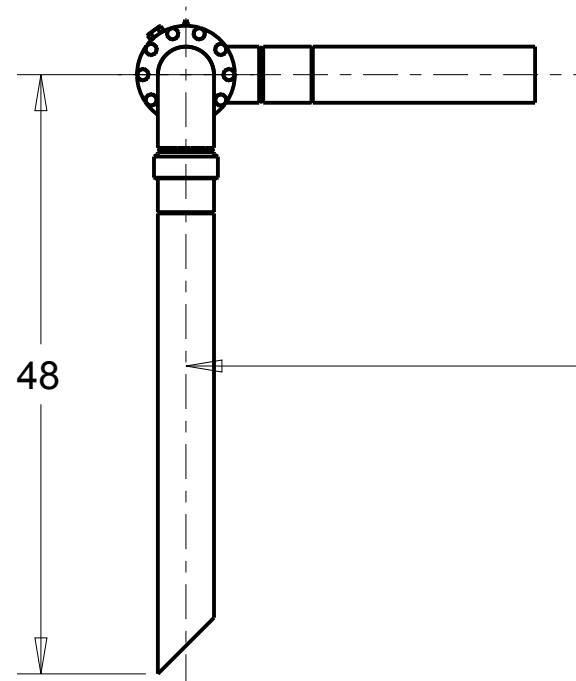
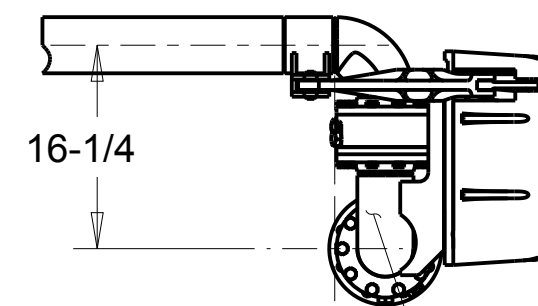
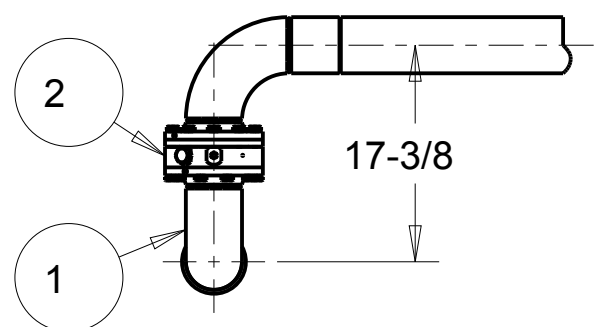
C

D

MATERIALS OF CONSTRUCTION	STAINLESS STEEL
SWIVEL JOINT SEALS	FLUOROCARBON
PRODUCT	CAUSTIC
MOMENT LOAD AT SUPPORT	12475 IN-LBS
FLANGE GASKETS	N/A
TEST PRESSURE	90 PSI
PRODUCT RETENTION	NO
RADIOGRAPHIC INSPECTION	YES
PMI TEST	NO
TIG PURGE	NO

THIS DRAWING IS NOT TO BE SCALED. FOR ADDITIONAL INFORMATION. PLEASE CONTACT OUR ENGINEERING DEPT.

REVISIONS					
LTR	ECN #	DESCRIPTION	DRAWN	APPROVED	DATE



16	1	EA	C20714	WDLT, SF X SRE, DSF, SST, 4"
15	1	EA	H31782PA	RADIOGRAPHIC INSPECTION REQUIRED, 5%
14	2	EA	HX99192	PIPE PKG, EJ32F-J339, SST, SCH.10, 4"
13	2	EA	C20693	MODULE, SWIVEL, SST, DSF, 4"
12	1	EA	LADOC-STD	LOADING ARM, NAME TAG AND HARDWARE
11	3	EA	LSK-8000-0402	LOADER SEAL KIT, 8000, FLUOROCARBON, 4"
10	1	EA	C20717	ASM, SF X LRE, SST, DSF, 4"
9	1	EA	H-30519-RE	ADPT, S10, MNPT, SST, 4"
8	2	EA	H-30520-RE	ADPT, S10, BW, SST, 4"
7	1	EA	C20709	ASM, SF x F, SST, DSF, 4"
6	1	EA	790C-0050	RIGHT HAND EZ ADJUST 'C' SPRING BALANCE
5	1	EA	788L-0040	LOCKDOWN UNIT, RH
4	1	EA	HX92062	4" DSF PIN LUG BRK'T
3	1	EA	HX92058	ASM, DSF, TOR PLT, UFRH/DFLH, SST, 4"
2	1	EA	C21231	MODULE, SWIVEL, SST, DSF SINGLE, 4"
1	1	EA	C20722	ASM, SF x LRE x WC, SST, DSF, 4"
ITEM	QTY	UM	PART NUMBER	DESCRIPTION

48

117

CONFIDENTIAL THIS DOCUMENT CONTAINS INFORMATION WHICH IS PROPRIETARY TO OPW, AND SHOULD BE PROTECTED ACCORDINGLY.

DESCRIPTION:
4" LOADING ARM, DSF, UFRH, FLUOROCARBON, LOCKDOWN, 117X48

SIGNATURES		MO-DA-YR
DRAWN:	TES	08-NOV-10
CHECKED:	-	-
MATERIAL:	WEIGHT:	
Stainless Steel	381 LBS	

REV:	PART NUMBER:
-	EJ32F-J339
SIZE:	SCALE: 0.065
C	SHEET 1 OF 3

OPW Engineered Systems
A **DOVER** Resources Company
Lebanon, Ohio 45036 USA

3D GENERATED DRAWING

A

B

C

D