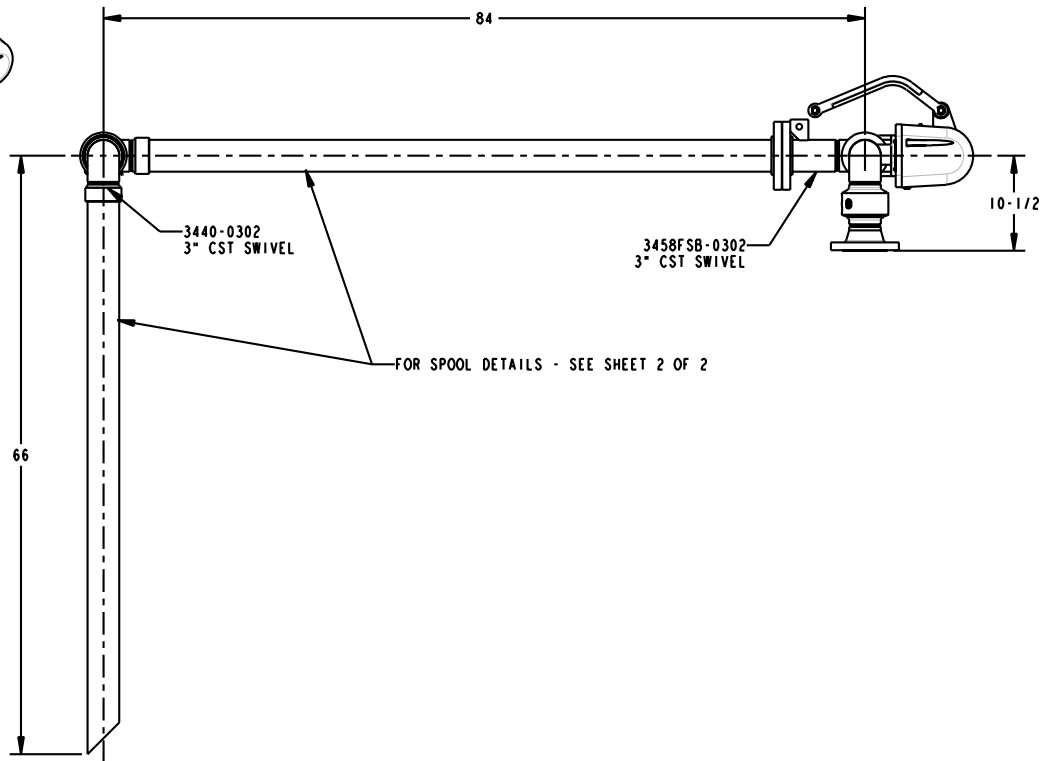
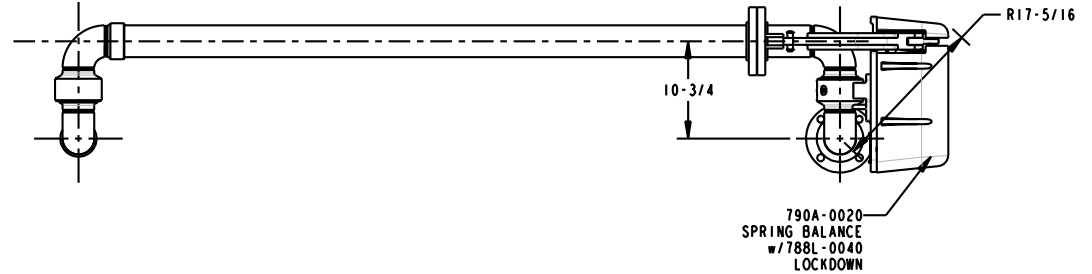
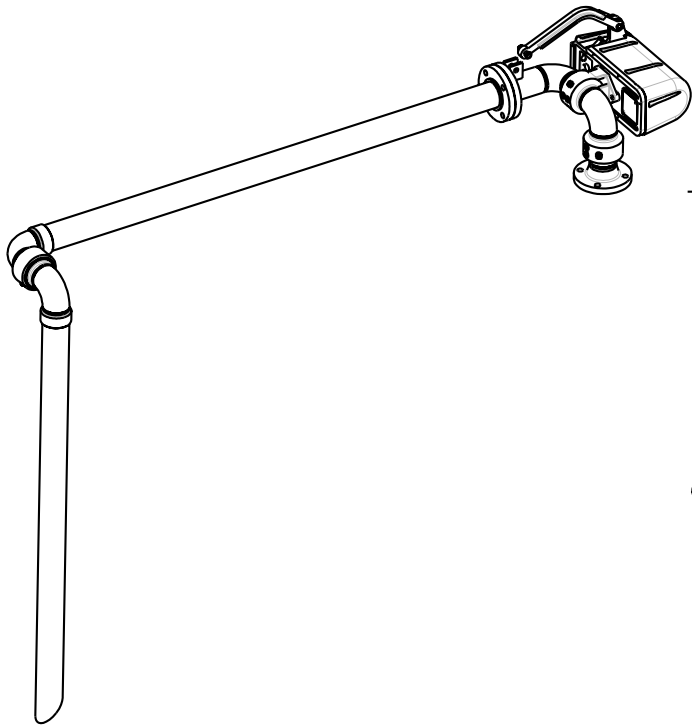


|                           |                   |
|---------------------------|-------------------|
| MATERIALS OF CONSTRUCTION | CARBON STEEL      |
| SWIVEL JOINT SEALS        | VITON             |
| PRODUCT                   | 50% CAUSTIC SODA  |
| ESTIMATED WEIGHT          | 230 LBS.          |
| MOMENT LOAD AT SPRING     | 5,875 IN-LBS.     |
| MOMENT LOAD AT INLET      | SAME              |
| FLANGE GASKETS            | KLINGER SIL C5400 |
| TEST PRESSURE             | 90 PSI            |
| PRODUCT RETENTION         | NO                |
| WEIGHT BY OTHERS          | NO                |

THIS DRAWING IS NOT TO BE SCALED. FOR ADDITIONAL INFORMATION, PLEASE CONTACT OUR ENGINEERING DEPT.

| REVISIONS |       |                      |       |          |          |
|-----------|-------|----------------------|-------|----------|----------|
| LTR       | ECN # | DESCRIPTION          | DRAWN | APPROVED | DATE     |
| -         | -     | ADDED VACUUM BREAKER | SCK   |          | 10/02/08 |



P.O. #502540

**CONFIDENTIAL** THIS DOCUMENT CONTAINS INFORMATION WHICH IS PROPRIETARY TO OPW, AND SHOULD BE PROTECTED ACCORDINGLY.

DESCRIPTION: 3" LOADING ARM, CST, VITON, UFRH

|  |     |            |          |
|--|-----|------------|----------|
| UNLESS OTHERWISE SPECIFIED<br>TOLERANCES ON DIMENSIONS<br>3 DECIMALS +/- 0.005<br>2 DECIMALS +/- 0.015<br>1 DECIMAL +/- 0.030<br>ANGLES +/- 1/2 DEG<br>MACHINED SURFACES 125 RMS MAX |     | SIGNATURES | MO-DA-YR |
| DRAWN:   | SCK | 10/14/08   |          |
| CHECKED:   |     |            |          |
| MATERIAL:  | CST | WEIGHT:    |          |

|              |                  |
|--------------|------------------|
| REV: -       | PART NUMBER:     |
| SIZE: D      | <b>J32F-G925</b> |
| SCALE: 0.085 | SHEET 1 OF 2     |

**OPW Engineered Systems**  
A **ROBERT** Resources Company  
Lebanon, Ohio 45036 USA  
3D GENERATED DRAWING