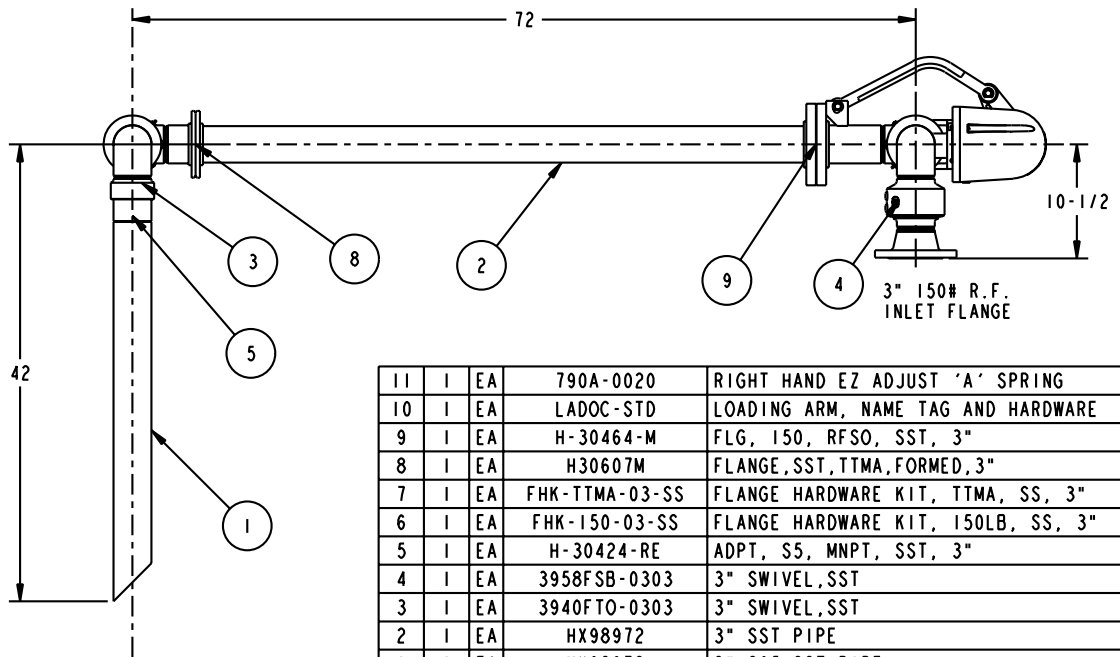
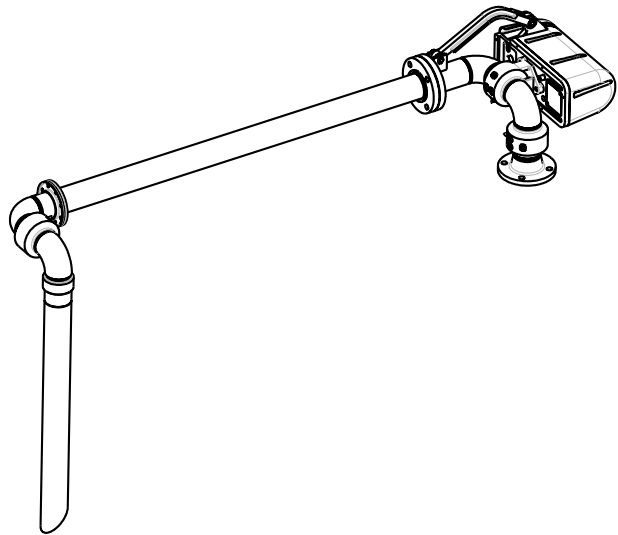
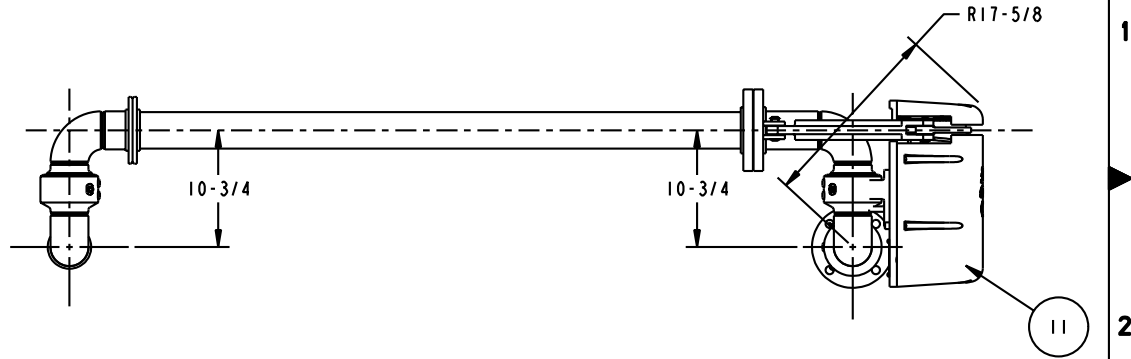


MATERIALS OF CONSTRUCTION	STAINLESS STEEL
SWIVEL JOINT SEALS	PTFE ENCAP SILICONE
PRODUCT	50% CAUSTIC SODA
ESTIMATED WEIGHT	221 lbs.
MOMENT LOAD AT SPRING	4,867 inlbs.
MOMENT LOAD AT INLET	SAME
FLANGE GASKETS	KLINGER SIL C5400
TEST PRESSURE	90 PSI
PRODUCT RETENTION	NO
WEIGHT BY OTHERS	NO

THIS DRAWING IS NOT TO BE SCALED. FOR ADDITIONAL INFORMATION, PLEASE CONTACT OUR ENGINEERING DEPT.

REVISIONS					
LTR	ECN #	DESCRIPTION	DRAWN	APPROVED	DATE
-	-	-	-	-	-



ITEM	QTY	UM	PART NUMBER	DESCRIPTION
11	1	EA	790A-0020	RIGHT HAND EZ ADJUST 'A' SPRING
10	1	EA	LADOC-STD	LOADING ARM, NAME TAG AND HARDWARE
9	1	EA	H-30464-M	FLG, 150, RFSO, SST, 3"
8	1	EA	H30607M	FLANGE, SST, TTMA, FORMED, 3"
7	1	EA	FHK-TTMA-03-SS	FLANGE HARDWARE KIT, TTMA, SS, 3"
6	1	EA	FHK-150-03-SS	FLANGE HARDWARE KIT, 150LB, SS, 3"
5	1	EA	H-30424-RE	ADPT, S5, MNPT, SST, 3"
4	1	EA	3958FSB-0303	3" SWIVEL, SST
3	1	EA	3940FTO-0303	3" SWIVEL, SST
2	1	EA	HX98972	3" SST PIPE
1	1	EA	HX98972	3" S05 SST PIPE

CONFIDENTIAL THIS DOCUMENT CONTAINS INFORMATION WHICH IS PROPRIETARY TO OPW, AND SHOULD BE PROTECTED ACCORDINGLY.

DESCRIPTION: 3" LOADING ARM, SST, PTFE, UFRH

SIGNATURES	MO-DA-YR
DRAWN: SCK	09/16/10
CHECKED:	
MATERIAL: SST	WEIGHT:

REV:	PART NUMBER:
	J32F-J221
SIZE: D	SCALE: 0.120

OPW Engineered Systems
 A **ROTECH** Resources Company
 Lebanon, Ohio 45036 USA
 3D GENERATED DRAWING

1

2

3

4

5

1

2

3

4

5

A

B

C

D

E