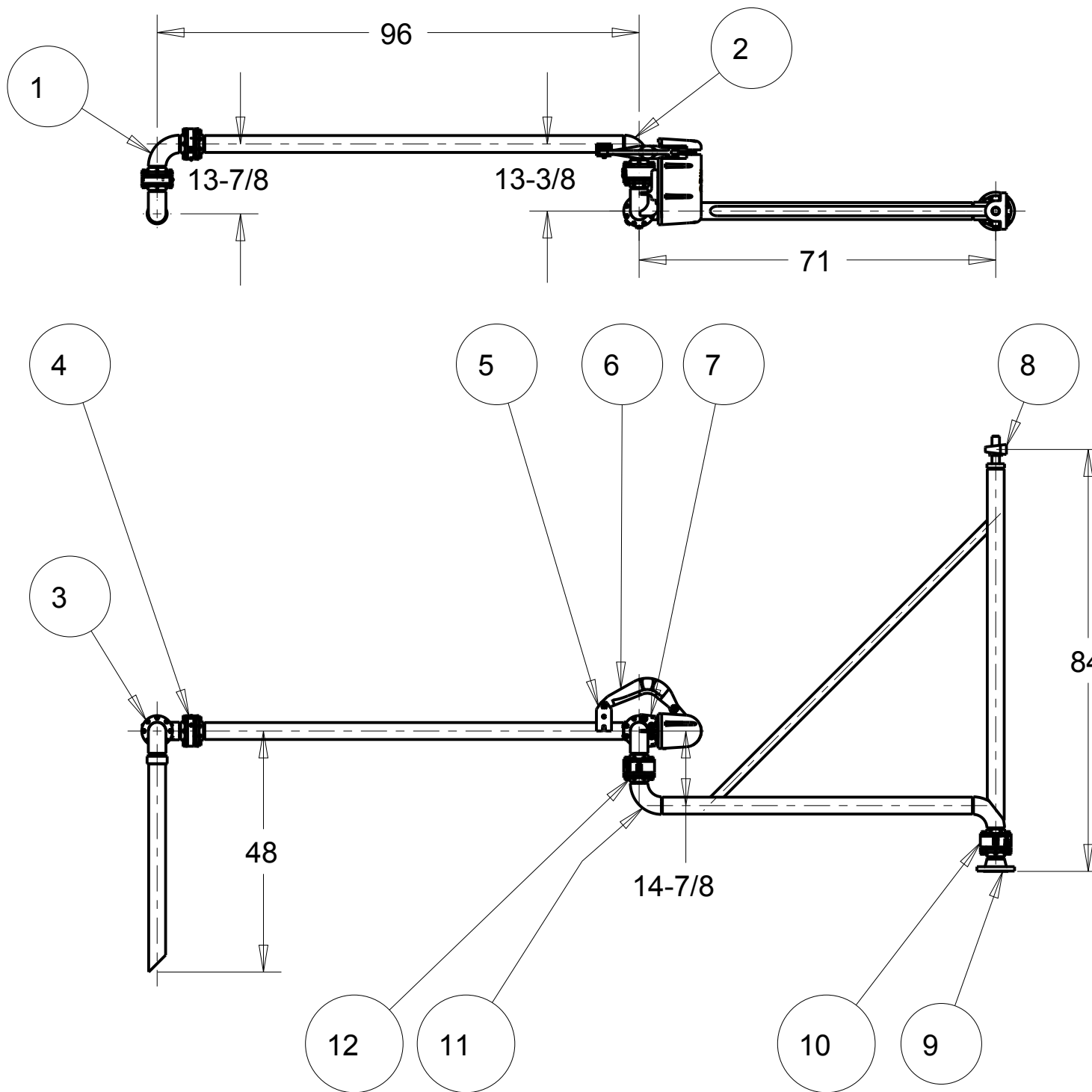


MATERIALS OF CONSTRUCTION	CARBON STEEL
SWIVEL JOINT SEALS	FLUOROCARBON
PRODUCT	CAUSTIC
WEIGHT	453 LBS
MOMENT LOAD AT SUPPORT	7590 IN-LBS
MOMENT LOAD AT INLET	26607 IN-LBS
FLANGE GASKETS	KLINGER SIL C5400
TEST PRESSURE	90 PSI
PRODUCT RETENTION	NO
RADIOGRAPHIC INSPECTION	YES
PMI TEST	NO
TIG PURGE	NO

THIS DRAWING IS NOT TO BE SCALED. FOR ADDITIONAL INFORMATION. PLEASE CONTACT OUR ENGINEERING DEPT.

REVISIONS			DRAWN	APPROVED	DATE
LTR	ECN #	DESCRIPTION			



18	1	EA	H-10231-RS	SHAFT STUB, AISI 12-L-14, CST, 3"
17	1	EA	H31782PA	RADIOGRAPHIC INSPECTION REQUIRED, 5%
16	1	EA	HX99166	PIPE PKG, EB32F-J327, CST, SCH.80, 1-1/2"
15	4	EA	HX99166	PIPE PKG, EB32F-J327, CST, 3"
14	1	EA	LADOC-STD	LOADING ARM, NAME TAG AND HARDWARE
13	5	EA	LSK-8000-0302	LOADER SEAL KIT, 8000, FLUOROCARBON GFLT, 3"
12	4	EA	C20534RS	FLANGE, CST, 3", CST
11	2	EA	H10229M	ELBOW, LR, S40, CST, 3"
10	3	EA	C20561	MODULE, SWIVEL, CST, DSF, 3"
9	1	EA	C20551	WLDT, SF x F, 3" CST DSF
8	1	EA	H-01180-M	PILLOW BLOCK BEARING
7	1	EA	C20787	ASM, BT STYLE, DFLH/UFRH, CST, DSF, 3"
6	1	EA	790B-0030	RIGHT HAND EZ ADJUST 'B' SPRING BALANCE
5	1	EA	C20784EW	BRK'T, PIN LUG, DSF, SST, 3"
4	2	EA	C21229	MODULE, SWIVEL, CST, DSF SINGLE, 3"
3	1	EA	C20588	WLDT, SF X LRE X WC, 3" CST DSF
2	1	EA	H-03821-M	ELBOW, SR, S40, CST, 3"
1	1	EA	C20555	WLDT, SF x LRE x SF, 3" CST DSF
ITEM	QTY	UM	PART NUMBER	DESCRIPTION

**CONFIDENTIAL** THIS DOCUMENT CONTAINS INFORMATION WHICH IS PROPRIETARY TO OPW, AND SHOULD BE PROTECTED ACCORDINGLY.

DESCRIPTION: 3" LOADING ARM, CST, FLUOROCARBON, 84" BOOM, 71 X 96 X 48

SIGNATURES		MO-DA-YR	REV:	PART NUMBER: <b>EB32F-J327</b>	 A DOVER Resources Company Lebanon, Ohio 45036 USA
DRAWN:	TES	03-NOV-10	-		
CHECKED:	-	-	SIZE:		
MATERIAL:	WEIGHT:		C		
Carbon Steel		387 LBS	SCALE: 0.035	SHEET 1 OF 3	3D GENERATED DRAWING