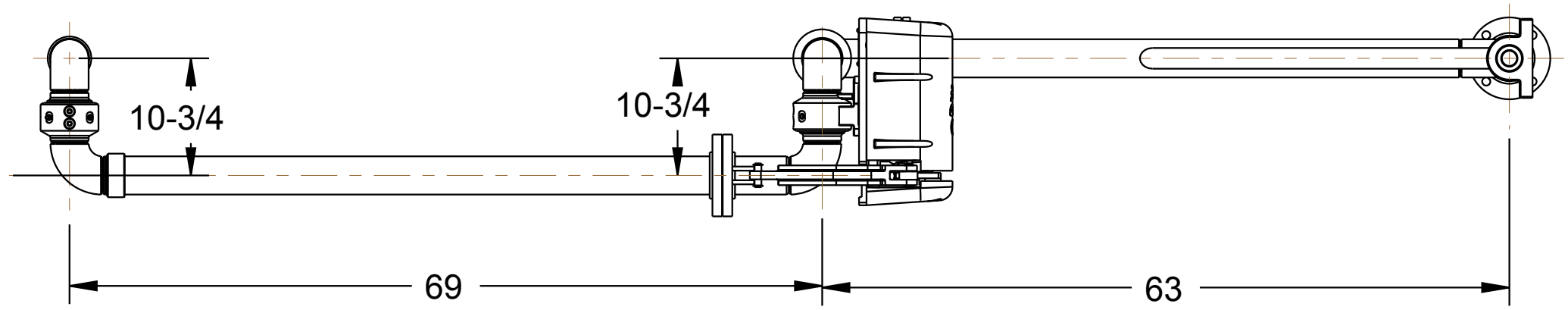


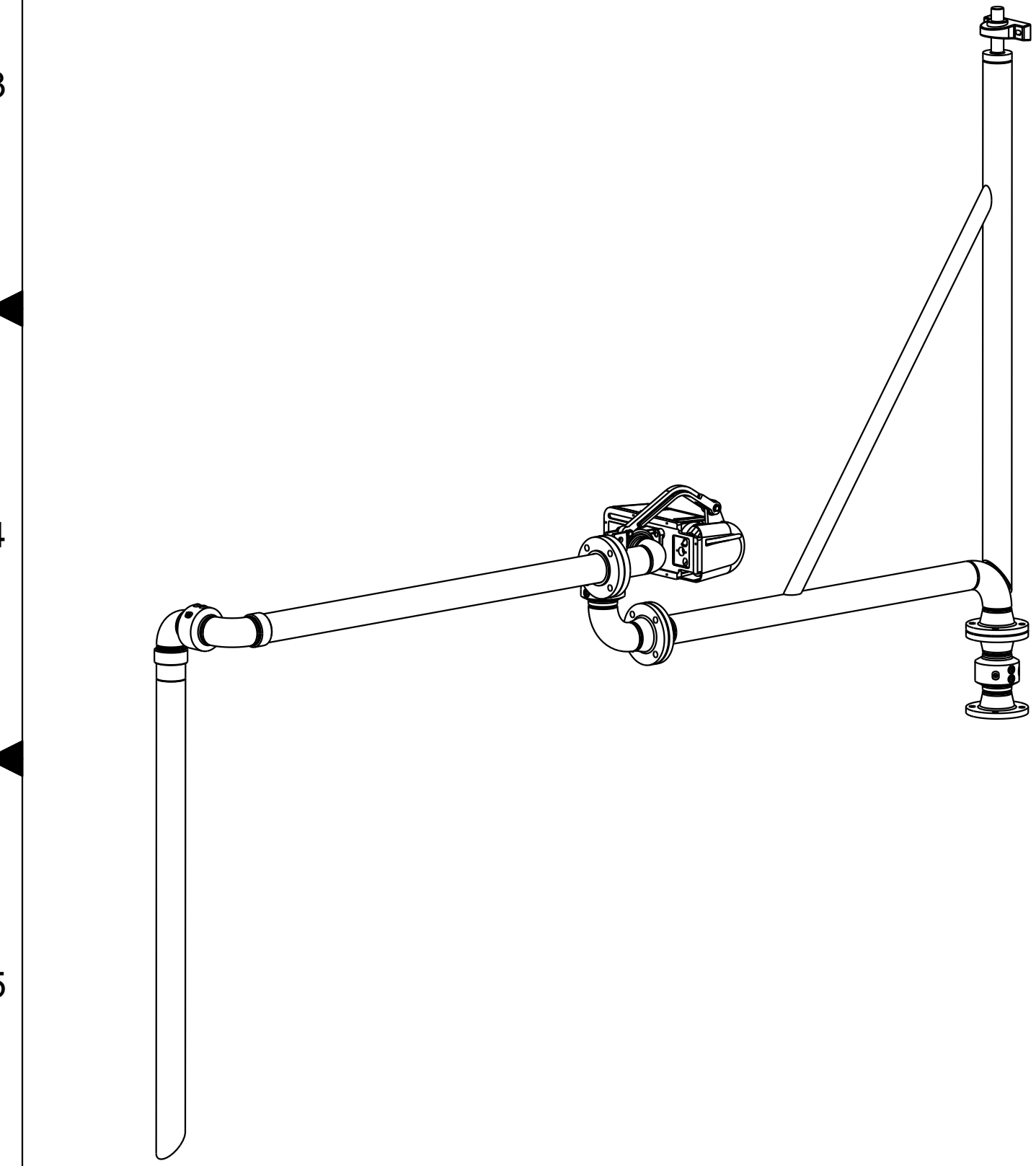
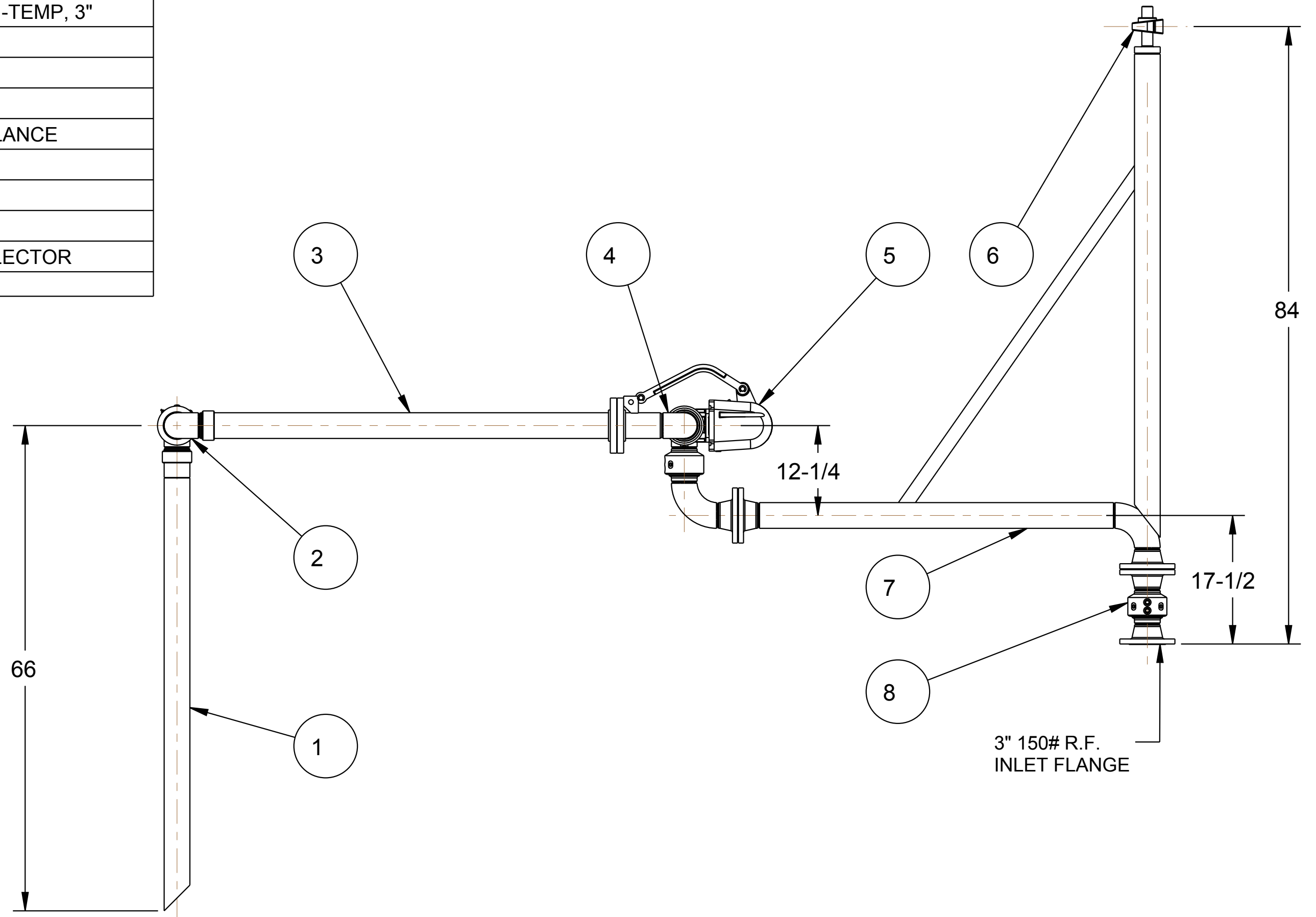
MATERIALS OF CONSTRUCTION	316L STAINLESS STEEL
SWIVEL JOINT SEALS	PTFE ENCAPSULATED SILICONE
PRODUCT	CAUSTIC
ESTIMATED WEIGHT	400 LBS
MOMENT LOAD AT SPRING	4,650 IN-LBS
MOMENT LOAD AT INLET	23,650 IN-LBS
FLANGE GASKETS	GARLOK GYLON
TEST PRESSURE	90 PSI
PRODUCT RETENTION	NO
ADDITIONAL WEIGHT BY OTHERS	NO

THIS DRAWING IS NOT TO BE SCALED. FOR ADDITIONAL INFORMATION, PLEASE CONTACT OUR ENGINEERING DEPT.

REVISIONS					
LTR	ECN #	DESCRIPTION	DRAWN	APPROVED	DATE
-	-	-	-	-	-



ITEM	QTY	UM	PART NUMBER	DESCRIPTION
11	1	EA	H31782PA	RADIOGRAPHIC INSPECTION REQUIRED, 5%
10	1	EA	LADOC-STD	LOADING ARM, NAME TAG AND HARDWARE
9	3	EA	FHK-150-03-SS-HT	FLANGE HARDWARE KIT, 150LB, SS, HI-TEMP, 3"
8	1	EA	3920F-0303	3" SWIVEL, SST
7	1	EA	N/A	3" BOOM ASSY W/SST WETTED PARTS
6	1	EA	H-01180-M	PILLOW BLOCK BEARING
5	1	EA	790ALH-0025	LEFT HAND EZ ADJUST 'A' SPRING BALANCE
4	1	EA	3976FSBL-0303	3" SWIVEL, SST
3	1	EA	N/A	3" SST OBR PIPE SPOOL
2	1	EA	3940-0303	3" SWIVEL, SST, VITON, FNPT
1	1	EA	N/A	3" SST DROP PIPE SPOOL W/TEE DEFLECTOR



CONFIDENTIAL - THIS DOCUMENT CONTAINS INFORMATION WHICH IS PROPRIETARY TO OPW, AND SHOULD BE PROTECTED ACCORDINGLY.

SIGNATURES		MO-DA-YR
DRAWN: JLP		11/02/10
CHECKED: -		-
MATERIAL:	WEIGHT:	-

DESCRIPTION: 3" TOP LOADING ARM

REV: -	PART NUMBER: B32F-J325	<b>Engineered Systems</b> <small>ALDOVER Resources Company</small> Lebanon, Ohio 45036 USA 3D GENERATED DRAWING
SIZE: D	SCALE: 0.075	
SHEET 1 OF 3		