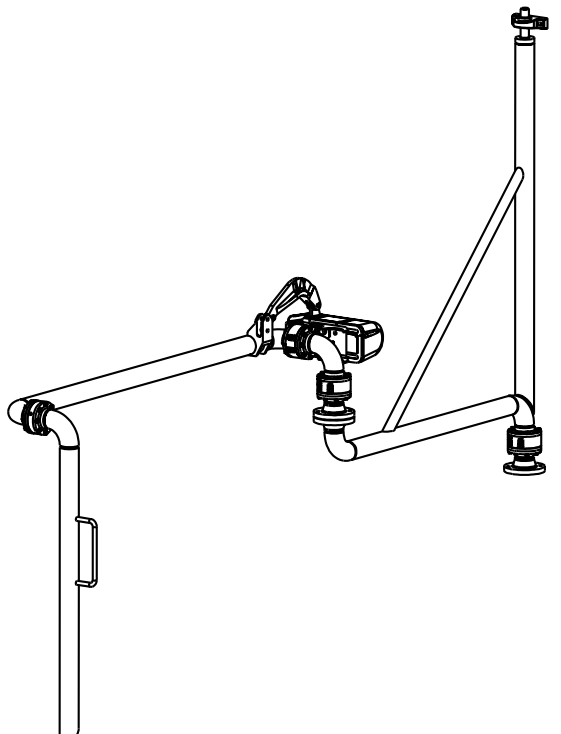
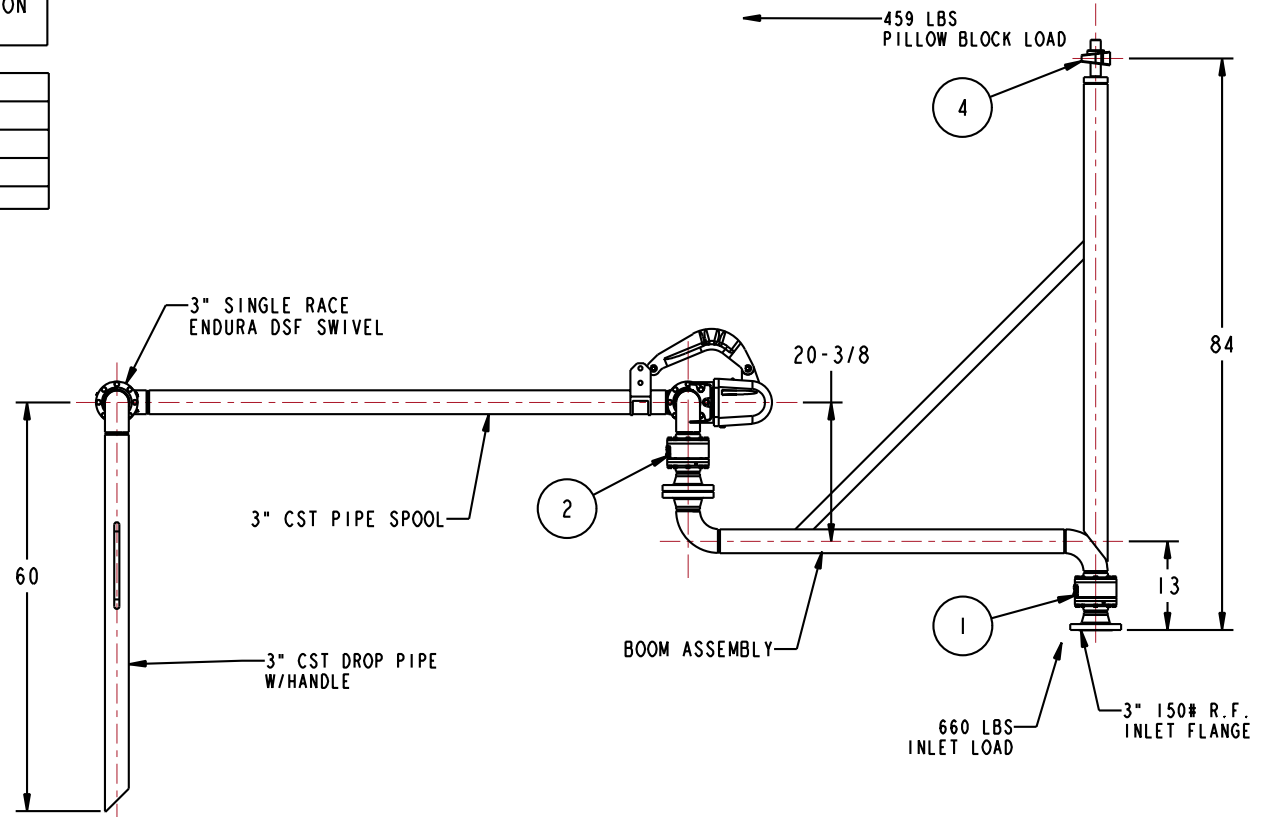
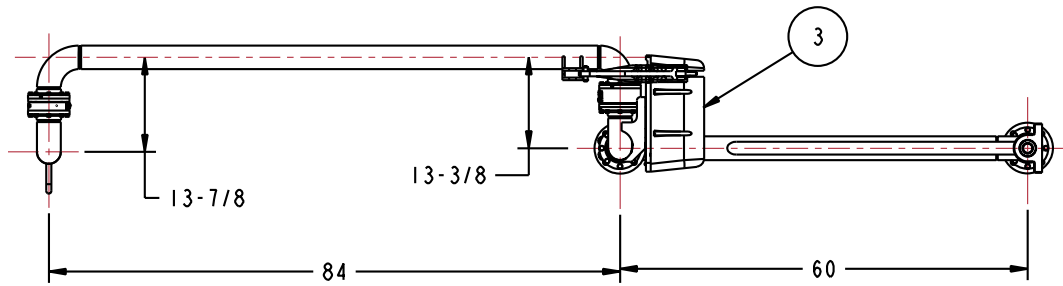


MATERIALS OF CONSTRUCTION	CARBON STEEL
SWIVEL JOINT SEALS	TFE ENCAPSULATED SILICONE
PRODUCT	CAUSTIC
ESTIMATED WEIGHT	440 LBS
MOMENT LOAD AT SPRING	6300 IN-LBS
MOMENT LOAD AT INLET	<20,000 IN-LBS
FLANGE GASKET	FLEXITALLIC
TEST PRESSURE	90 PSI
PRODUCT RETENTION	NO
WEIGHT BY OTHERS	NONE
RADIOGRAPHIC INSPECTION	5% FLOW PASSAGE WELDS
MATERIAL TEST REPORTS	REQUIRED
ALL FLOW PASSAGE PIPING	A106 GR B SEAMLESS
SURFACE PREP & PAINT	PER VALERO SPECIFICATION
REF: HX96863PA	BBEDD 19-0

4	I	EA	H-01180-M	PILLOW BLOCK BEARING
3	I	EA	790B-0030	EZ ADJUST TORSION SPRING BALANCE
2	I	EA	8478FW-G667	3" SWIVEL ASSY, ENDURA DSF, CST
1	I	EA	8430FW-G975	3" SWIVEL ASSY, ENDURA DSF, CST
ITEM	QTY	UM	PART NUMBER	DESCRIPTION

THIS DRAWING IS NOT TO BE SCALED. FOR ADDITIONAL INFORMATION, PLEASE CONTACT OUR ENGINEERING DEPT.

REVISIONS					
LTR	ECN #	DESCRIPTION	DRAWN	APPROVED	DATE
-	-	-	-	-	-



CONFIDENTIAL THIS DOCUMENT CONTAINS INFORMATION WHICH IS PROPRIETARY TO OPW, AND SHOULD BE PROTECTED ACCORDINGLY.

DESCRIPTION: 3" LOADING ARM, RH

UNLESS OTHERWISE SPECIFIED  
 TOLERANCES ON DIMENSIONS  
 3 DECIMALS +/- 0.005  
 2 DECIMALS +/- 0.015  
 1 DECIMAL +/- 0.030  
 ANGLES +/- 1/2 DEG  
 MACHINED SURFACES 125 RMS MAX

SIGNATURES: BJB  
 MO-DA-YR: 10/30  
 CHECKED: -  
 MATERIAL: -  
 WEIGHT: -

REV: -  
 SIZE: D

PART NUMBER: EB32F-G974  
 SCALE: 0.075

OPW Engineered Systems  
 A BOSTED Resources Company  
 Lebanon, Ohio 45036 USA  
 SHEET 1 OF 4  
 3D GENERATED DRAWING