

A

B

C

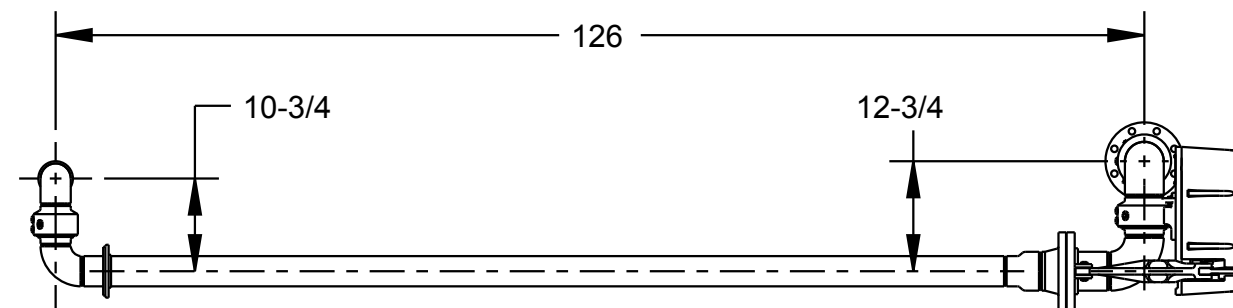
D

THIS DRAWING IS NOT TO BE SCALED. FOR ADDITIONAL INFORMATION. PLEASE CONTACT OUR ENGINEERING DEPT.

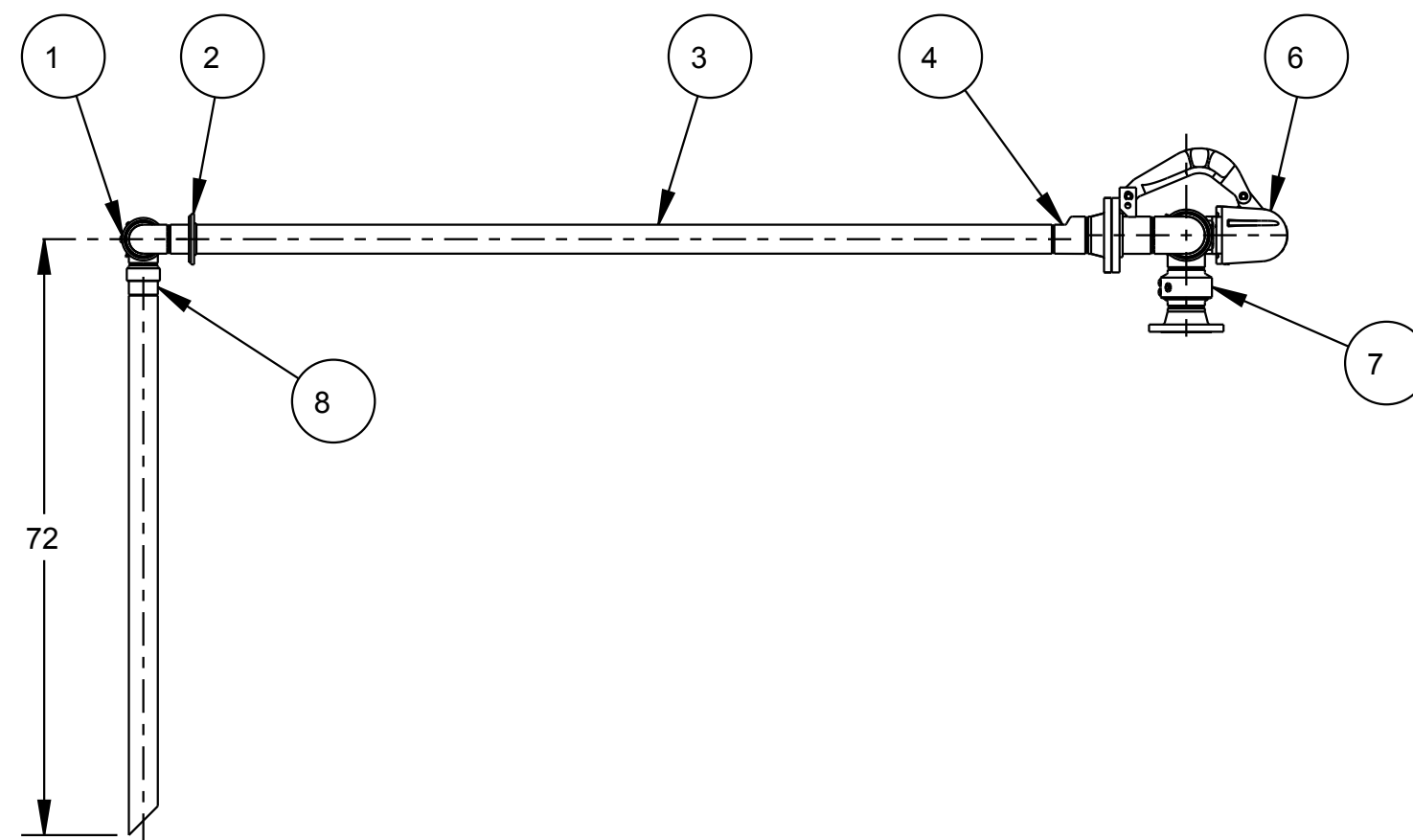
REVISIONS

LTR	ECN #	DESCRIPTION	DRAWN	APPROVED	DATE
-	-	-	-	-	-

MATERIALS OF CONSTRUCTION	CARBON STEEL
SWIVEL JOINT SEALS	FLUOROCARBON GFLT
PRODUCT	BIODIESEL
WEIGHT	287 LBS
MOMENT LOAD AT SUPPORT	11,323 IN-LBS
MOMENT LOAD AT INLET	SAME
FLANGE GASKETS	KLINGERSIL C5400
TEST PRESSURE	90 PSI
RADIOGRAPHIC INSPECTION	NO
PMI TEST	NO
WEIGHT BY OTHERS	NO



12	1	EA	LADOC-STD	LOADING ARM, NAME TAG AND HARDWARE
11	1	EA	H03819M	FLANGE, 150, RFWN, S40, CST, 4"
10	1	EA	FHK-TTMA-03-CS	FLANGE HARDWARE KIT, TTMA, CS, 3"
9	1	EA	FHK-150-04-CS	FLANGE HARDWARE KIT, 150LB, CS, 4"
8	1	EA	H-07784-RS	ADPT, TUBING, MNPT, CST, 3"
7	1	EA	3456FSB-0402	SWIVEL ASM, CST, TORSION BRKT, 150LB, GFLT, 4"
6	1	EA	790CLH-0045	LEFT HAND EZ ADJUST 'C' SPRING BALANCE
4	1	EA	H31388M	REDUCER, ECC, S40, CST, 4 X 3
3	2	EA	HX98827	PIPE PKG, J32F-J146, CST, 4" X 3"
2	1	EA	C03286M	FLANGE, CST, TTMA, FORMED, 3"
1	1	EA	3440FTO-0302	SWIVEL ASM, TTMA X THRD, GFLT, CST, 3"
ITEM	QTY	UM	PART NUMBER	DESCRIPTION



CONFIDENTIAL THIS DOCUMENT CONTAINS INFORMATION WHICH IS PROPRIETARY TO OPW, AND SHOULD BE PROTECTED ACCORDINGLY.

DESCRIPTION:
4" X 3" J32F, CST, GFLT, UFLH, 126 X 72

SIGNATURES		MO-DA-YR	REV:
DRAWN:	TES	09-AUG-10	-
CHECKED:	-	-	SIZE:
MATERIAL:	WEIGHT:		C
CARBON STEEL			SCALE: 0.045

PART NUMBER:	J32F-J146
SCALE: 0.045	
SHEET 1 OF 3	3D GENERATED DRAWING

OPW Engineered Systems
A **DOVER** Resources Company
Lebanon, Ohio 45036 USA

A

B

C

D