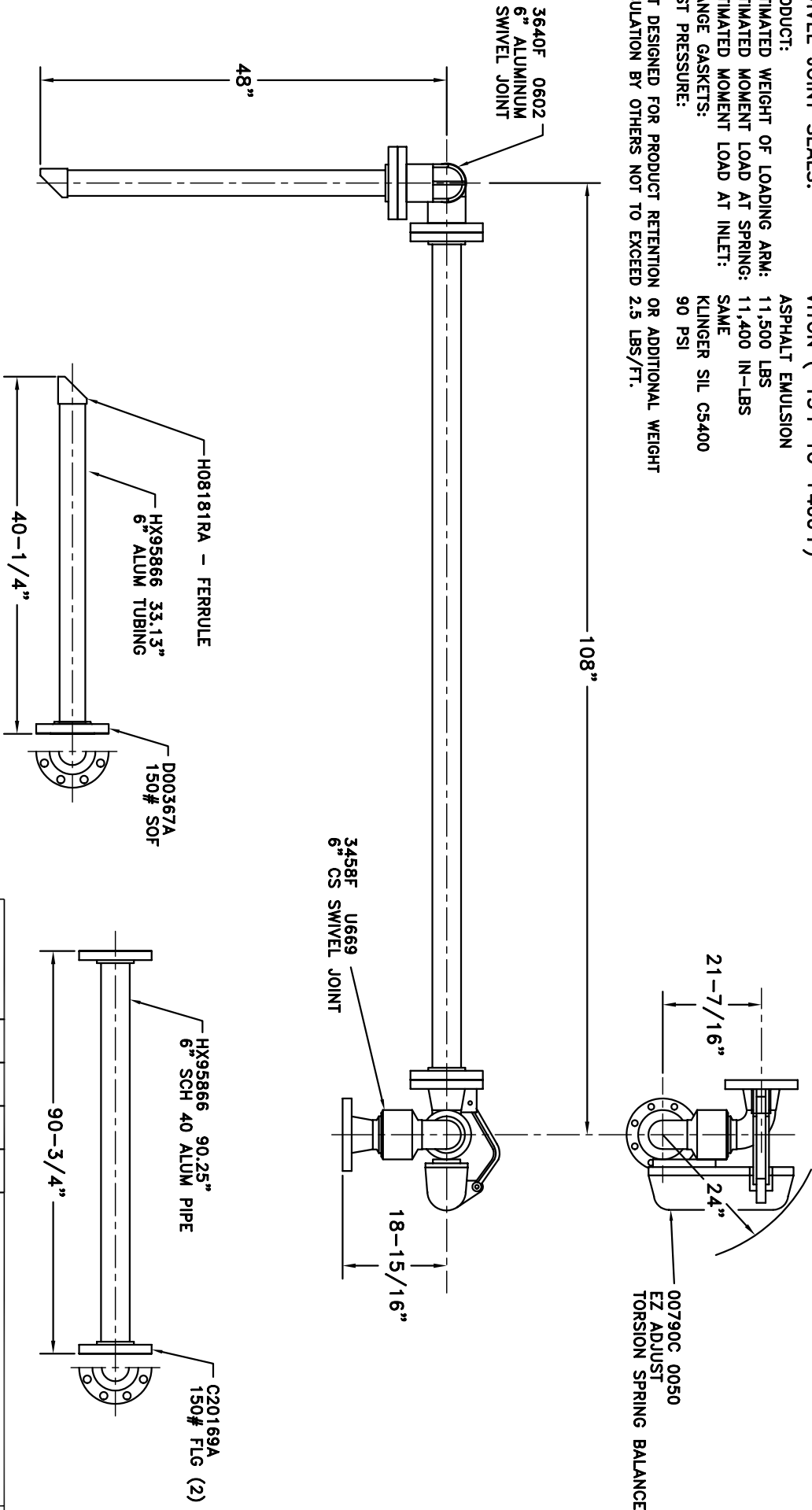


MATERIALS OF CONSTRUCTION: CARBON STEEL & ALUMINUM  
 SWIVEL JOINT SEALS: VITON (-15°F TO +400°F)

PRODUCT: ASPHALT EMULSION  
 ESTIMATED WEIGHT OF LOADING ARM: 11,500 LBS  
 ESTIMATED MOMENT LOAD AT SPRING: 11,400 IN-LBS  
 ESTIMATED MOMENT LOAD AT INLET: SAME  
 FLANGE GASKETS: KLINGER SIL CS400  
 TEST PRESSURE: 90 PSI  
 NOT DESIGNED FOR PRODUCT RETENTION OR ADDITIONAL WEIGHT INSULATION BY OTHERS NOT TO EXCEED 2.5 LBS/FT.



- H04372M 24 BOLT
- H06455M 24 NUT
- H02510M 24 WASHER
- H04191M 3 GASKET
- H02209PA 1 INSTRUCTION SHEET
- H30446M 1 ALUM NAME PLATE
- H30447M 2 SST TIE BANDS

OPERATION	A	B	C	D
WELD				
MACHINE				
ASSY & TEST				
ASSY ONLY				
TEST ONLY				
PAINT				

1. HIGHLIGHT RECD. OPERATIONS PER ASSY.  
 2. RECORD CLOCK NO. WHEN COMPLETE.

**6" J32F-C083**

**OPW**  
**Engineered Systems**  
 www.opw-es.com

DRAWN BY: BUB  
 CHECKED BY: [ ]  
 QUOTE NO. 15343

SCALE: NONE  
 DATE: 2/25/08  
 DRAWING: ND.