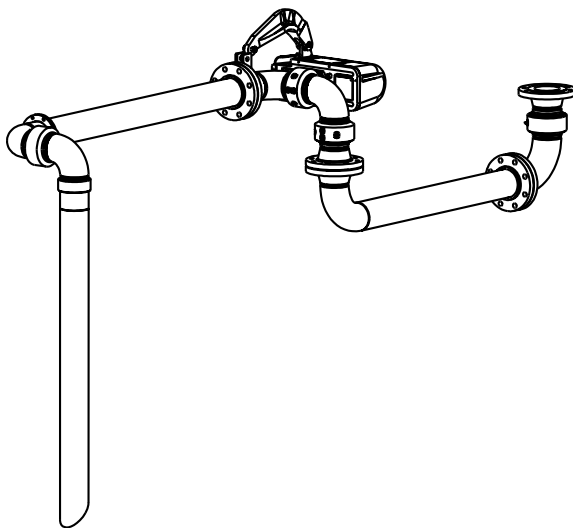
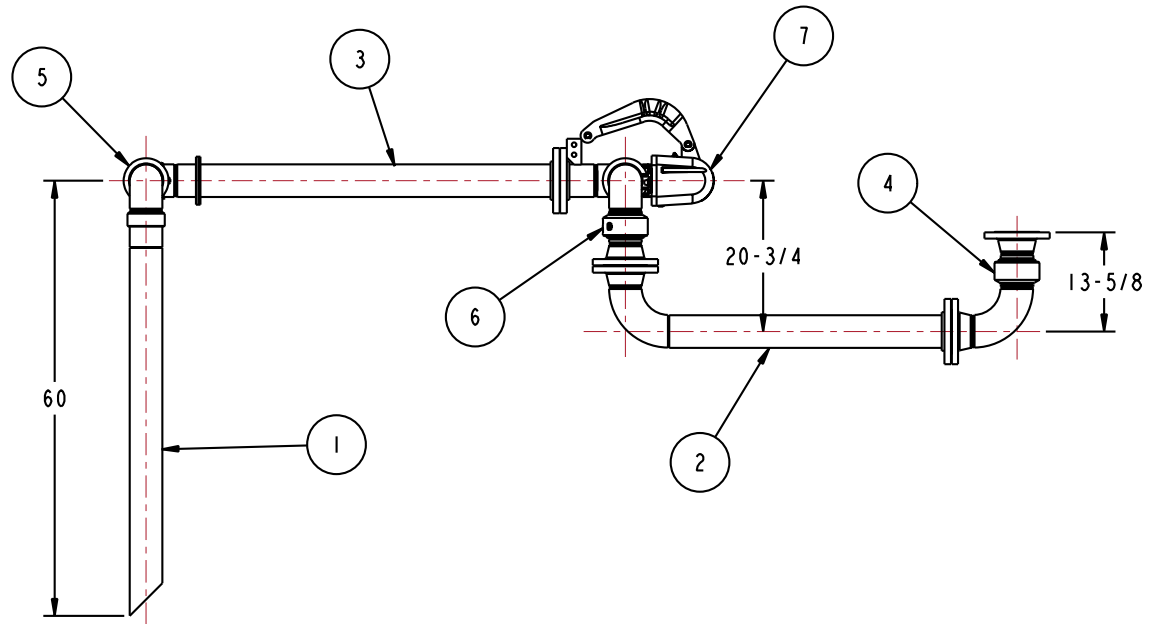
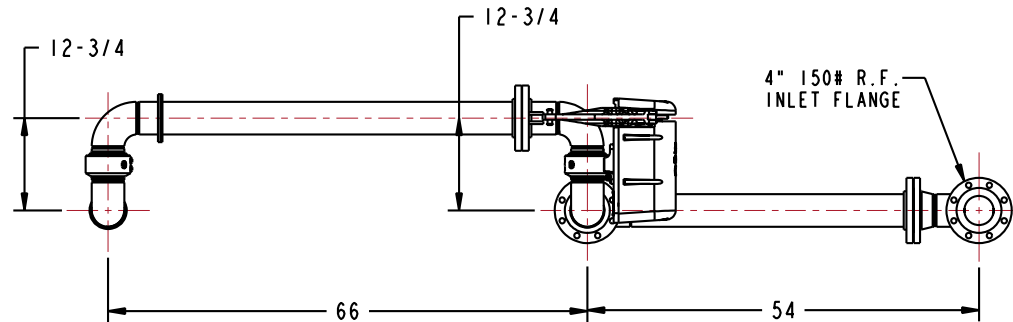


MATERIALS OF CONSTRUCTION	CARBON STEEL
SWIVEL JOINT SEALS	LOW-TEMP FLUOROCARBON
PRODUCT	ASPHALT
ESTIMATED WEIGHT	450 LBS
MOMENT LOAD AT SPRING	7650 IN-LBS
MOMENT LOAD AT INLET	27,000 IN-LBS
FLANGE GASKETS	KLINGER SIL C5400
TEST PRESSURE	90 PSI
PRODUCT RETENTION	NO
WEIGHT BY OTHERS	INSULATION & TRACING AT 2.5 LBS/FT

7	I	EA	790B-0030	RIGHT HAND EZ ADJUST 'B' SPRING BALANCE
6	I	EA	3458FSB-0402	4" SWIVEL, CST
5	I	EA	3440FTO-0402	4" SWIVEL, CST
4	I	EA	3430FL-0402	4" SWIVEL, CST
3	I	EA	N/A	4" CST OBR PIPE SPOOL
2	I	EA	N/A	4" CST IBR PIPE SPOOL
1	I	EA	N/A	4" CST DROP PIPE SPOOL
ITEM	QTY	UM	PART NUMBER	DESCRIPTION

THIS DRAWING IS NOT TO BE SCALED. FOR ADDITIONAL INFORMATION, PLEASE CONTACT OUR ENGINEERING DEPT.

REVISIONS					
LTR	ECN #	DESCRIPTION	DRAWN	APPROVED	DATE
-	-	-	-	-	-



CONFIDENTIAL THIS DOCUMENT CONTAINS INFORMATION WHICH IS PROPRIETARY TO OPW, AND SHOULD BE PROTECTED ACCORDINGLY.

DESCRIPTION: 4" TOP LOADING ARM, UFRH

SIGNATURES		MO-DA-YR
DRAWN: BJB		7/24/09
CHECKED:		
MATERIAL:	WEIGHT:	

REV: -	PART NUMBER:
SIZE: D	GT32F-H473
SCALE: 0.080	SHEET 1 OF 2

OPW Engineered Systems
 A **ROBERT** Resources Company
 Lebanon, Ohio 45036 USA
 3D GENERATED DRAWING