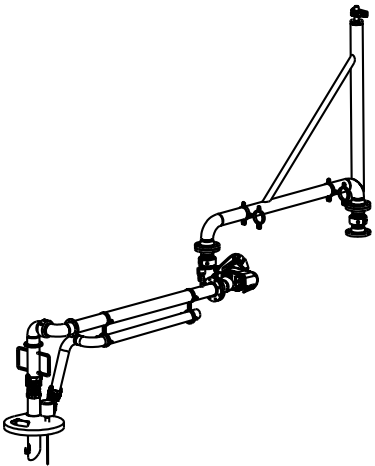


MATERIALS OF CONSTRUCTION	CARBON STEEL
SWIVEL JOINT SEALS	FLUOROCARBON MAIN & ENVIRONMENTAL
PRODUCT	ASPHALT
ESTIMATED WEIGHT	650 LBS
MOMENT LOAD AT SPRING	11,050 IN-LBS
MOMENT LOAD AT INLET	<47,300 IN-LBS
FLANGE GASKETS	KLINGER SIL C5400
TEST PRESSURE	90 PSI
PRODUCT RETENTION	NO
WEIGHT BY OTHERS	INSULATION % HEAT TRACING NOT TO EXCEED 7 LBS/FT

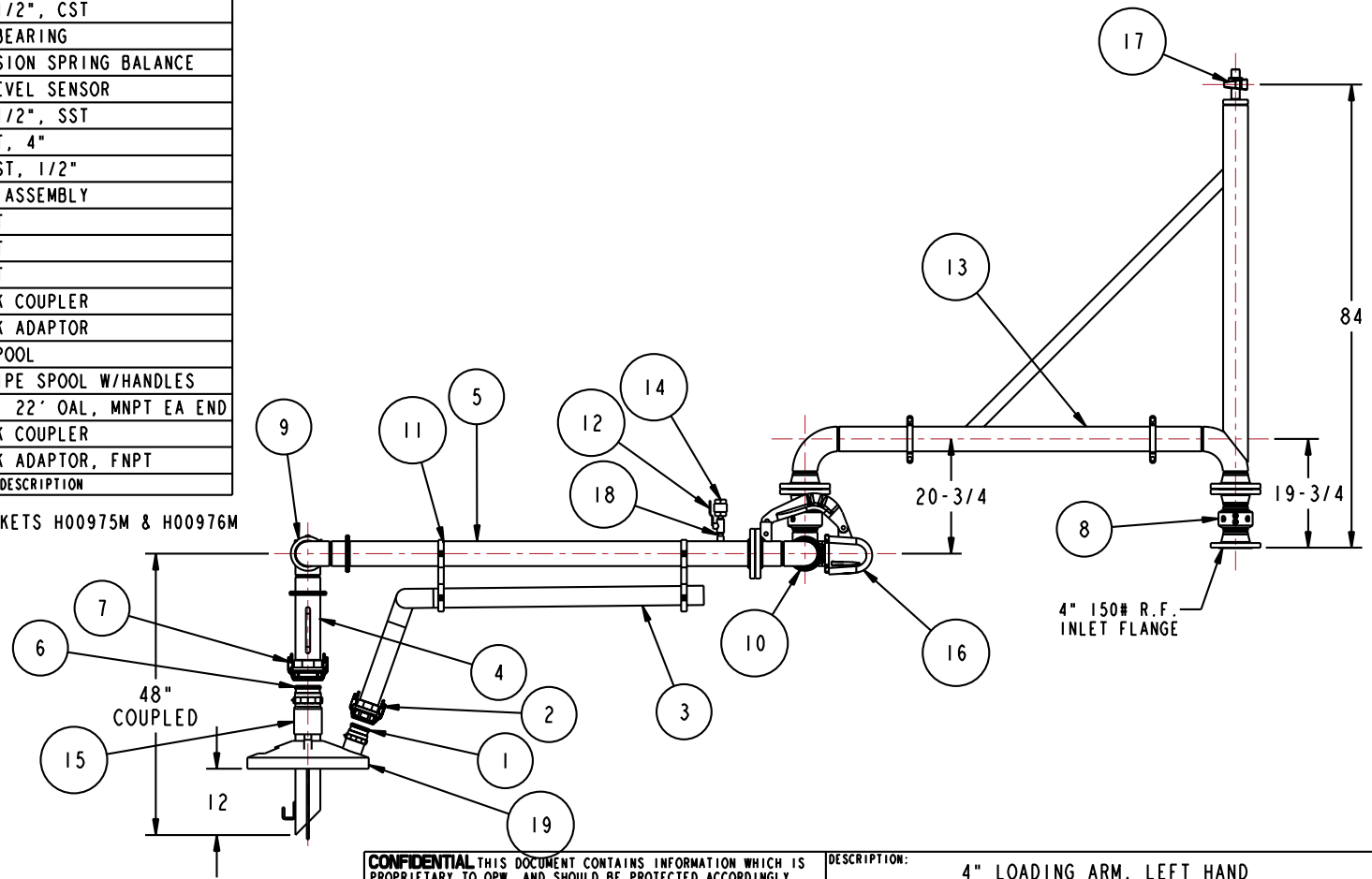
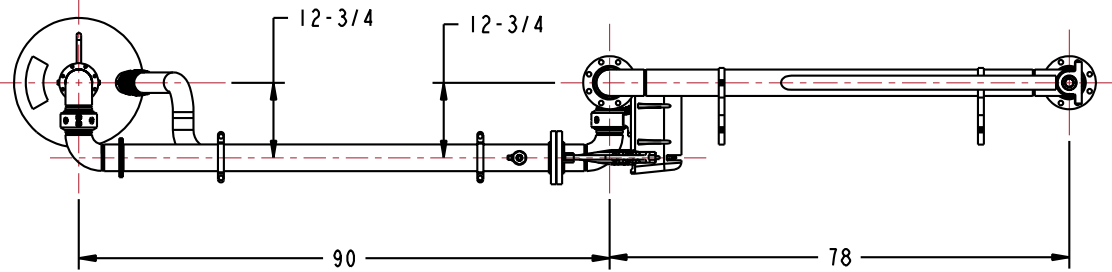
19	1	EA	N/A	VAPOR HOOD, CST
18	2	EA	HX92646ND	PIPE NIPPLE, 1/2", CST
17	1	EA	H-01180-M	PILLOW BLOCK BEARING
16	1	EA	790CLH-0045	EZ ADJUST TORSION SPRING BALANCE
15	1	EA	HX97500	DREXELBROOK LEVEL SENSOR
14	1	EA	HX95881	CHECK VALVE, 1/2", SST
13	1	EA	N/A	BOOM ASSY, CST, 4"
12	1	EA	HX95880	BALL VALVE, SST, 1/2"
11	4	EA	HX84519	4" X 4" CLAMP ASSEMBLY
10	1	EA	3458FSBD-C785	4" SWIVEL, CST
9	1	EA	3440FFT-C783	4" SWIVEL, CST
8	1	EA	3420F-C427	4" SWIVEL, CST
7	1	EA	733DL-40SB	4" SST AUTOLOK COUPLER
6	1	EA	633A-SS40	4" SST AUTOLOK ADAPTOR
5	1	EA	N/A	4" CST PIPE SPOOL
4	1	EA	N/A	4" CST DROP PIPE SPOOL W/HANDLES
3	1	EA	HX95478	3" VAPOR HOSE, 22' OAL, MNPT EA END
2	1	EA	733DL-30SB	3" SST AUTOLOK COUPLER
1	1	EA	633A-SS30	3" SST AUTOLOK ADAPTOR, FNPT
ITEM	QTY	UM	PART NUMBER	DESCRIPTION

NOTE: AUTOLOK COUPLERS HAVE VITON GASKETS H00975M & H00976M



THIS DRAWING IS NOT TO BE SCALED. FOR ADDITIONAL INFORMATION, PLEASE CONTACT OUR ENGINEERING DEPT.

REVISIONS					
LTR	ECN #	DESCRIPTION	DRAWN	APPROVED	DATE



CONFIDENTIAL THIS DOCUMENT CONTAINS INFORMATION WHICH IS PROPRIETARY TO OPW, AND SHOULD BE PROTECTED ACCORDINGLY.

DESCRIPTION: 4" LOADING ARM, LEFT HAND

SIGNATURES	MO-DA-YR
DRAWN: BJB	5/6/09
CHECKED:	
MATERIAL:	WEIGHT:

REV: -	PART NUMBER:
SIZE: D	B33F-H320
SCALE: 0.065	SHEET 1 OF 4

OPW **Engineered Systems**
A **ROBERT** Resources Company
Lebanon, Ohio 45036 USA
3D GENERATED DRAWING