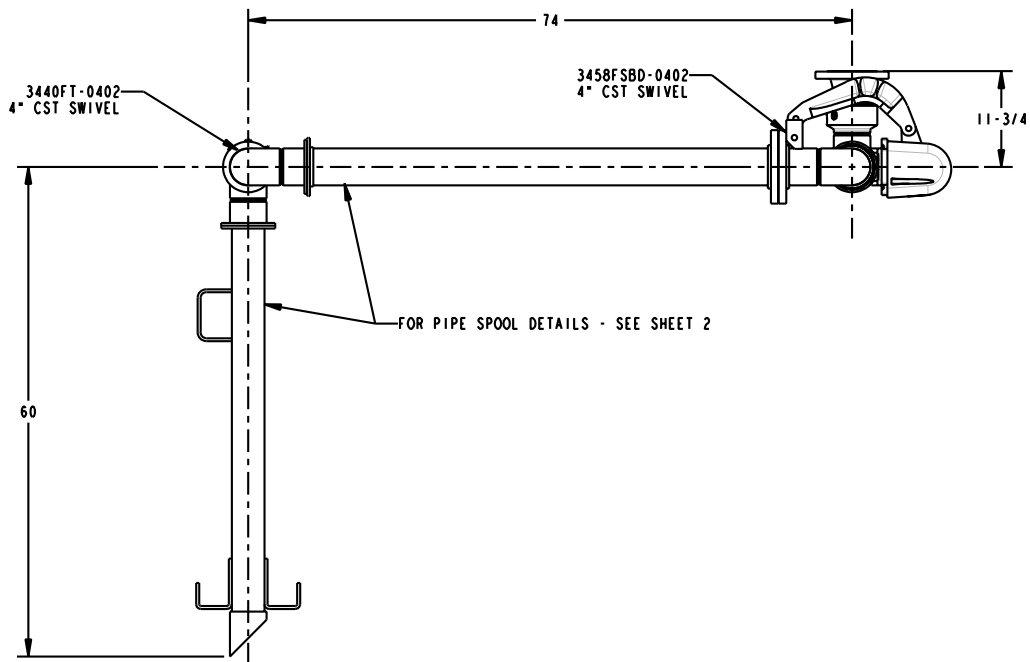
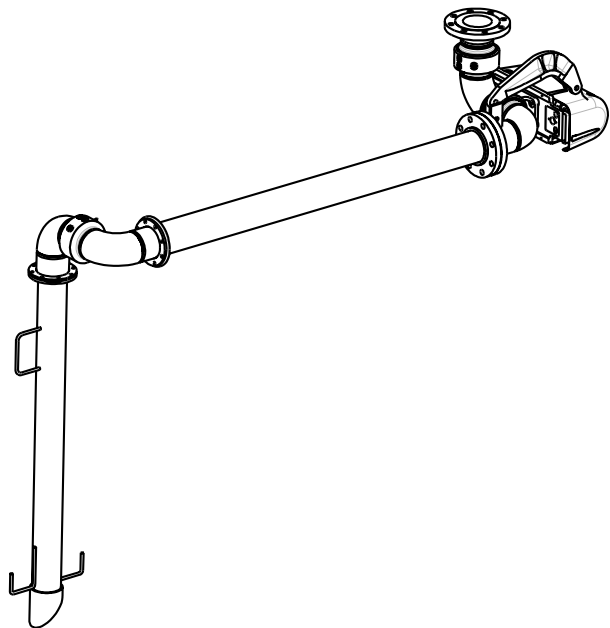
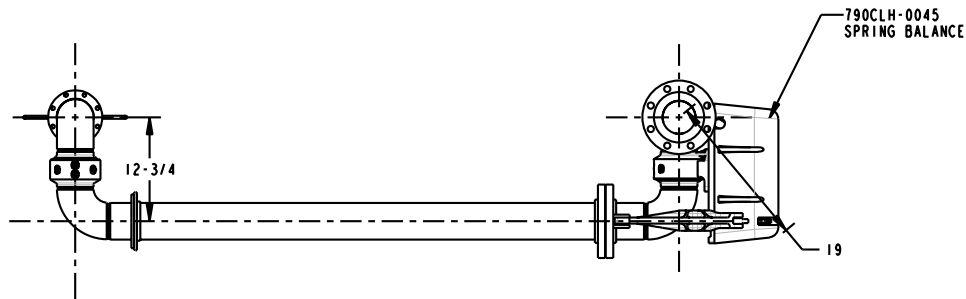


MATERIALS OF CONSTRUCTION	CARBON STEEL
SWIVEL JOINT SEALS	VITON
PRODUCT	ASPHALT
ESTIMATED WEIGHT	280 LBS
MOMENT LOAD AT SPRING	10,725 IN-LBS
MOMENT LOAD AT INLET	SAME
FLANGE GASKETS	KLINGER SIL C5400
TEST PRESSURE	90 PSI
PRODUCT RETENTION	NO
WEIGHT BY OTHERS	NO

THIS DRAWING IS NOT TO BE SCALED. FOR ADDITIONAL INFORMATION, PLEASE CONTACT OUR ENGINEERING DEPT.

REVISIONS					
LTR	ECN #	DESCRIPTION	DRAWN	APPROVED	DATE
-	-	-	-	-	-



CONFIDENTIAL THIS DOCUMENT CONTAINS INFORMATION WHICH IS PROPRIETARY TO OPW, AND SHOULD BE PROTECTED ACCORDINGLY.			DESCRIPTION: 4" LOADING ARM, CST, VITON, DFLH, 74" X 60"		
UNLESS OTHERWISE SPECIFIED TOLERANCES ON DIMENSIONS 3 DECIMALS +/- 0.005 2 DECIMALS +/- 0.015 1 DECIMAL +/- 0.030 ANGLES +/- 1/2 DEG MACHINED SURFACES 125 RMS MAX		SIGNATURES	MO-DA-YR	REV:	PART NUMBER:
		DRAWN: SCK	11/25/08	-	J33F-H028
		CHECKED:	-	SIZE:	D
		MATERIAL: CST	WEIGHT:	-	SCALE: 0.090
				SHEET 1 OF 2	
				3D GENERATED DRAWING	

