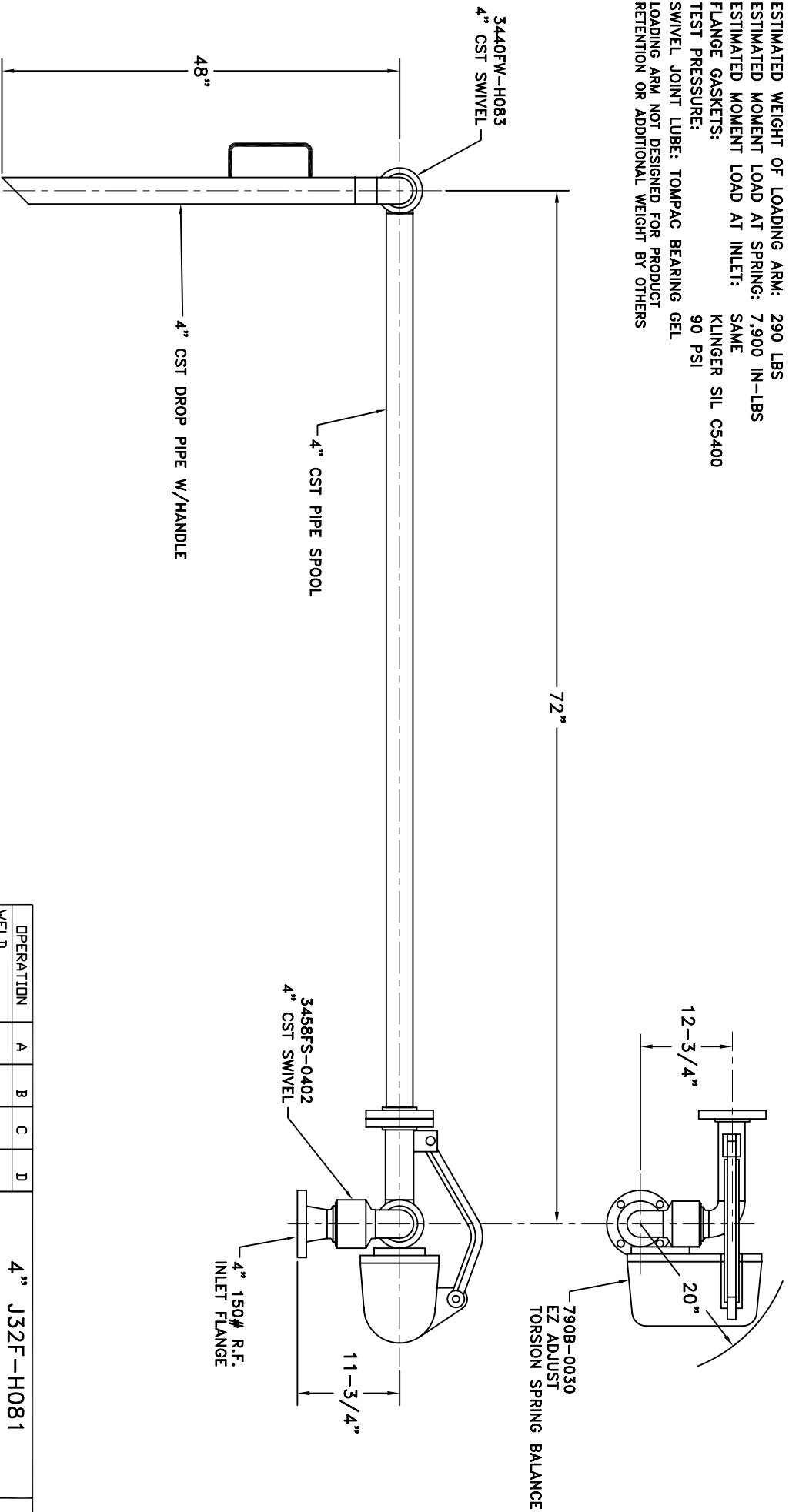


MATERIALS OF CONSTRUCTION: CARBON STEEL
 SWIVEL JOINT SEALS: LO-TEMP FLUOROCARBON

PRODUCT: ASPHALT
 ESTIMATED WEIGHT OF LOADING ARM: 290 LBS
 ESTIMATED MOMENT LOAD AT SPRING: 7,900 IN-LBS
 ESTIMATED MOMENT LOAD AT INLET: SAME
 FLANGE GASKETS: KLINGER SIL CS400
 TEST PRESSURE: 90 PSI
 SWIVEL JOINT LUBE: TOMPAC BEARING GEL
 LOADING ARM NOT DESIGNED FOR PRODUCT
 RETENTION OR ADDITIONAL WEIGHT BY OTHERS



OPERATION	A	B	C	D
WELD				
MACHINE				
ASSY & TEST				
ASSY ONLY				
TEST ONLY				
PAINT				

1. HIGHLIGHT RECD. OPERATIONS PER ASSY.
 2. RECORD CLOCK NO. WHEN COMPLETE.

4" J32F-H081

OPW *Engineered Systems*
 www.opw-es.com

DRAWN BY: JLP
 CHECKED BY: []
 SCALE: NONE
 DATE: 12/19/08
 DRAWING NO. []