

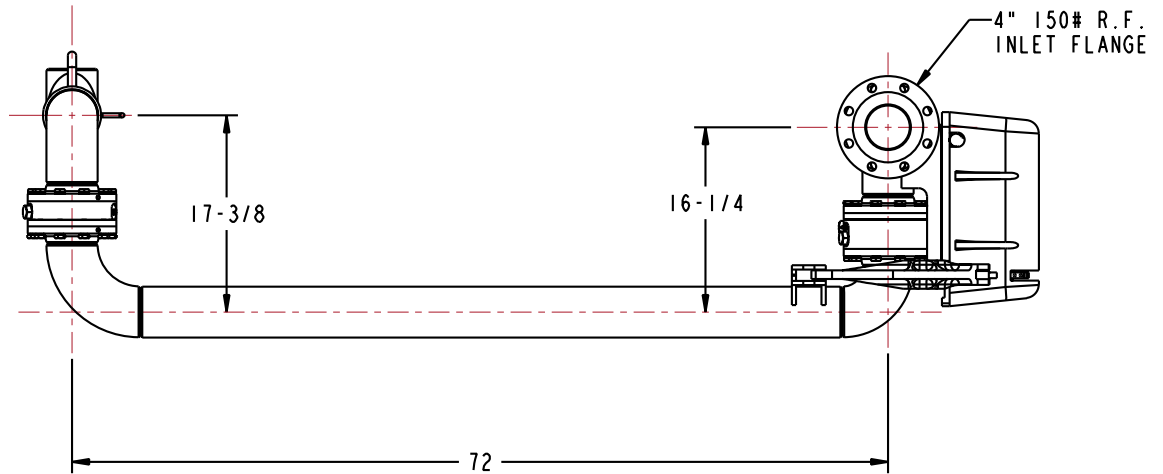
MATERIALS OF CONSTRUCTION	CARBON STEEL
SWIVEL JOINT SEALS	VITON GFLT
PRODUCT	ASPHALT
ESTIMATED WEIGHT	350 LBS
MOMENT LOAD AT SPRING	8700 IN-LBS
TEST PRESSURE	90 PSI
PRODUCT RETENTION	NO
WEIGHT BY OTHERS	NO

3	1	EA	790CLH-0045	EZ ADJUST TORSION SPRING BALANCE
2	1	EA	8458FSD-G580	4" SWIVEL ASSY, ENDURA DSF, CST
1	1	EA	N/A	4" CST DROP PIPE
ITEM	QTY	UM	PART NUMBER	DESCRIPTION

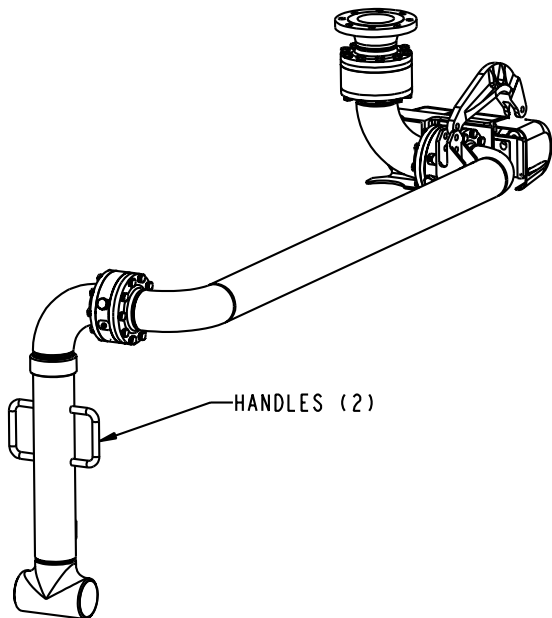
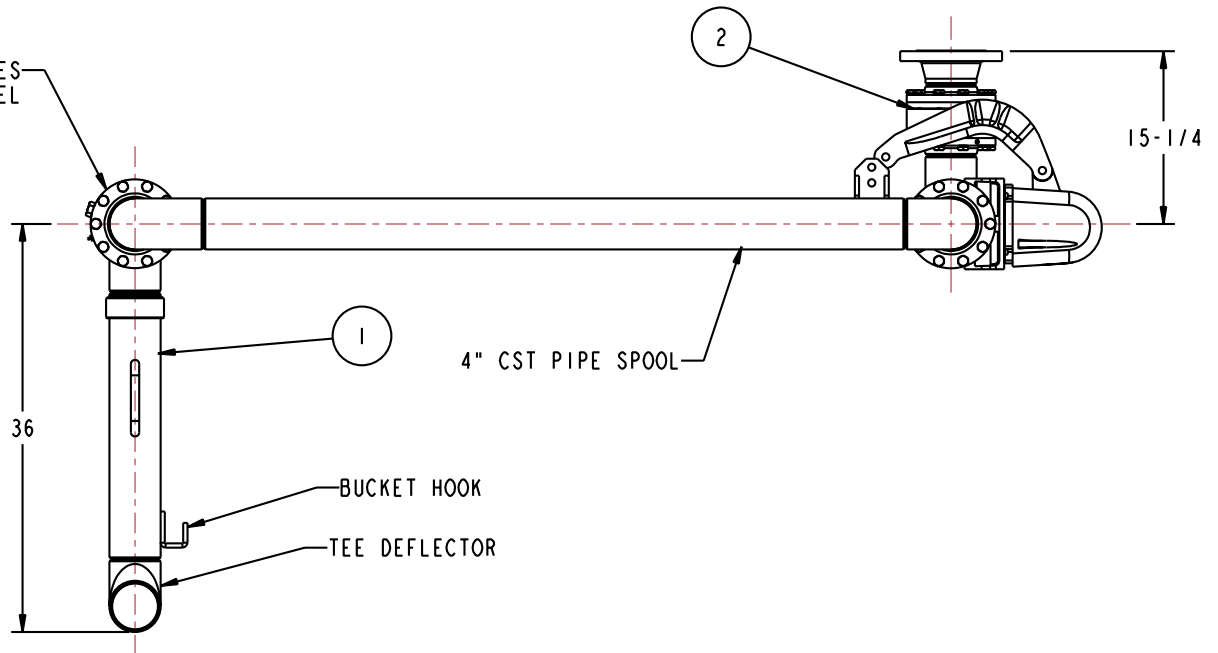
H02209PA	1	INSTRUCTION SHEET
H30446M	1	ALUM NAME PLATE
H30447M	2	SST TIE BANDS

THIS DRAWING IS NOT TO BE SCALED. FOR ADDITIONAL INFORMATION, PLEASE CONTACT OUR ENGINEERING DEPT.

REVISIONS					
LTR	ECN #	DESCRIPTION	DRAWN	APPROVED	DATE
-	-	-	-	-	-



ENDURA 8200 SERIES DSF SWIVEL



CONFIDENTIAL THIS DOCUMENT CONTAINS INFORMATION WHICH IS PROPRIETARY TO OPW, AND SHOULD BE PROTECTED ACCORDINGLY.

DESCRIPTION: 4" LOADING ARM, LH, SK19047A

UNLESS OTHERWISE SPECIFIED
 TOLERANCES ON DIMENSIONS
 3 DECIMALS +/- 0.005
 2 DECIMALS +/- 0.015
 1 DECIMAL +/- 0.030
 ANGLES +/- 1/2 DEG
 MACHINED SURFACES 125 RMS MAX

SIGNATURES	MO-DA-YR
DRAWN: BJB	7/14/08
CHECKED:	-
MATERIAL:	WEIGHT:

REV:	-
SIZE:	D

PART NUMBER:
EJ33F-G577
 SCALE: 0.125 SHEET 1 OF 3

OPW **Engineered Systems**
 A **ROBERT** Resources Company
 Lebanon, Ohio 45036 USA
 3D GENERATED DRAWING