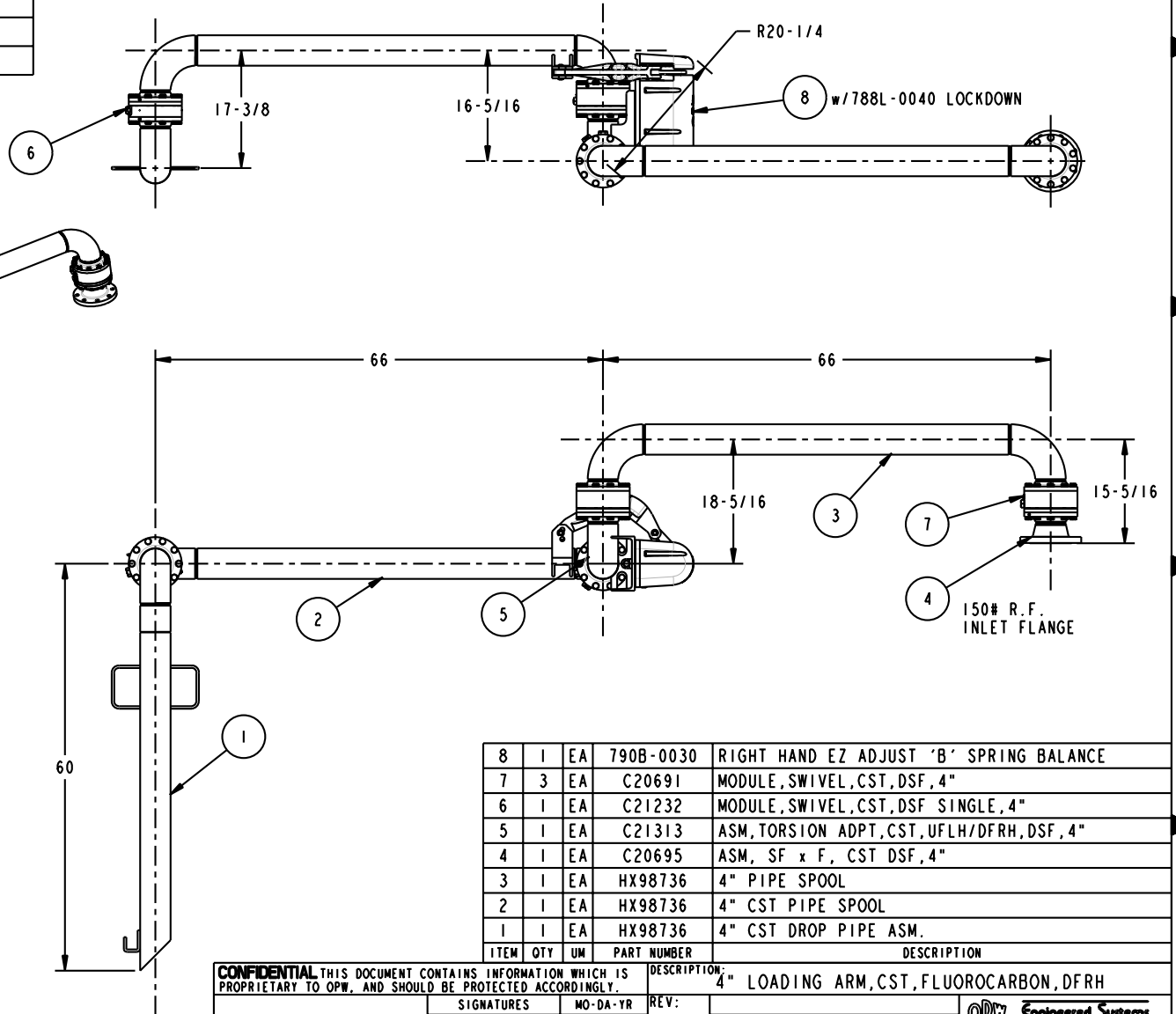


MATERIALS OF CONSTRUCTION	CARBON STEEL
SWIVEL JOINT SEALS	FLUOROCARBON
PRODUCT	ASPHALT
ESTIMATED WEIGHT	508 lbs.
MOMENT LOAD AT SPRING	7,610 inlbs.
MOMENT LOAD AT INLET	33,691 inlbs.
FLANGE GASKETS	N/A
TEST PRESSURE	90 PSI
PRODUCT RETENTION	NO
WEIGHT BY OTHERS	NO

THIS DRAWING IS NOT TO BE SCALED. FOR ADDITIONAL INFORMATION, PLEASE CONTACT OUR ENGINEERING DEPT.

REVISIONS					
LTR	ECN #	DESCRIPTION	DRAWN	APPROVED	DATE
-	-	-	-	-	-



ITEM	QTY	UM	PART NUMBER	DESCRIPTION
8	1	EA	790B-0030	RIGHT HAND EZ ADJUST 'B' SPRING BALANCE
7	3	EA	C20691	MODULE, SWIVEL, CST, DSF, 4"
6	1	EA	C21232	MODULE, SWIVEL, CST, DSF SINGLE, 4"
5	1	EA	C21313	ASM, TORSION ADPT, CST, UFLH/DFRH, DSF, 4"
4	1	EA	C20695	ASM, SF x F, CST DSF, 4"
3	1	EA	HX98736	4" PIPE SPOOL
2	1	EA	HX98736	4" CST PIPE SPOOL
1	1	EA	HX98736	4" CST DROP PIPE ASM.

CONFIDENTIAL THIS DOCUMENT CONTAINS INFORMATION WHICH IS PROPRIETARY TO OPW, AND SHOULD BE PROTECTED ACCORDINGLY.

DESCRIPTION: 4" LOADING ARM, CST, FLUOROCARBON, DFRH

SIGNATURES	MO-DA-YR	REV:
DRAWN: SCK	07/13/10	-
CHECKED:	-	SIZE:
MATERIAL: CST	WEIGHT:	D

PART NUMBER:	Engineered Systems <small>A BOSTED Resources Company</small> Lebanon, Ohio 45036 USA
EGT33F-J102	
SCALE: 0.100 SHEET 1 OF 3	

3D GENERATED DRAWING