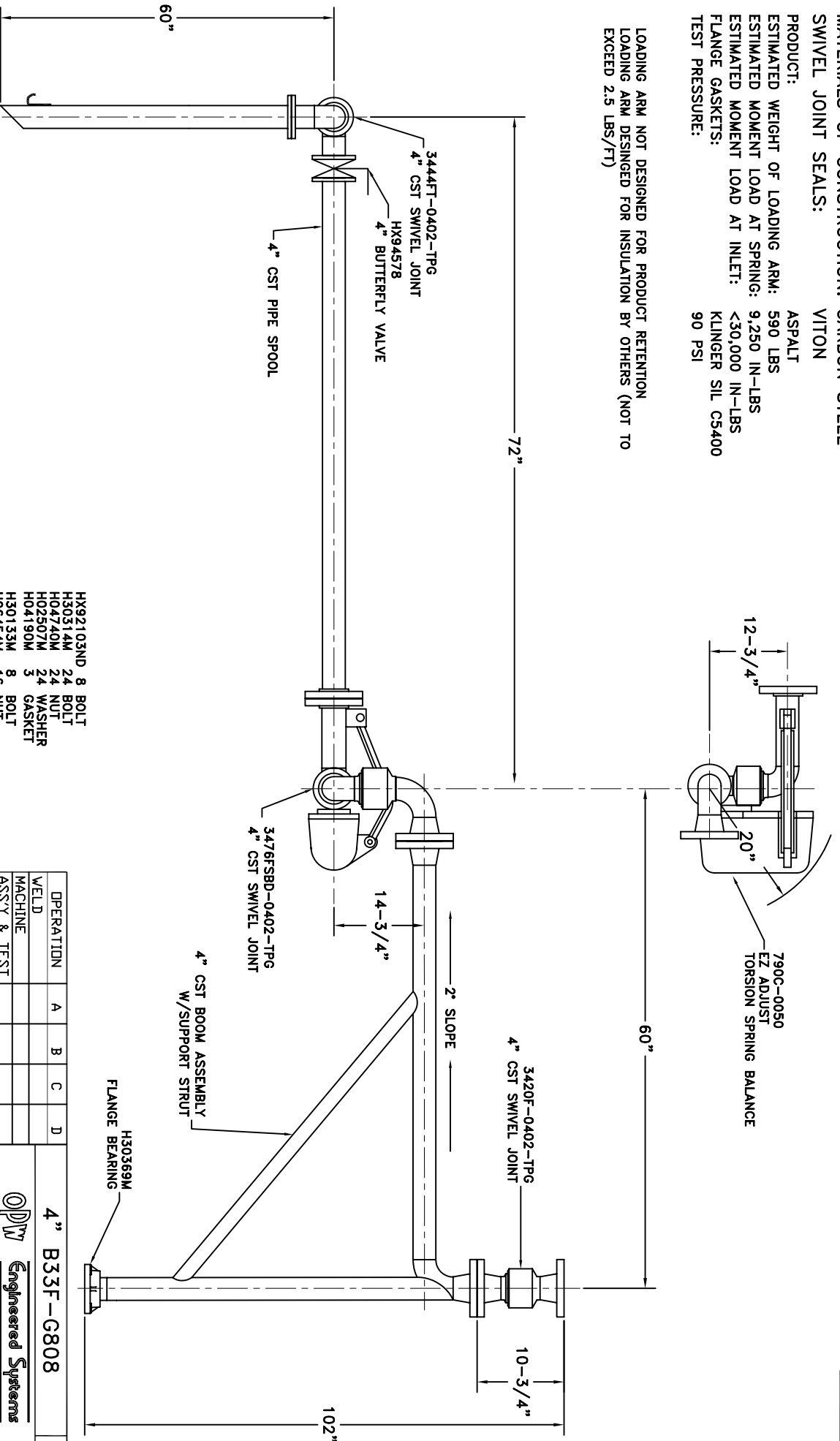


**MATERIALS OF CONSTRUCTION: CARBON STEEL
SWIVEL JOINT SEALS: VITON**

PRODUCT: ASPHALT
ESTIMATED WEIGHT OF LOADING ARM: 590 LBS
ESTIMATED MOMENT LOAD AT SPRING: 9,250 IN-LBS
ESTIMATED MOMENT LOAD AT INLET: <30,000 IN-LBS
FLANGE GASKETS: KLINGER SIL CS400
TEST PRESSURE: 90 PSI

**LOADING ARM NOT DESIGNED FOR PRODUCT RETENTION
 LOADING ARM DESIGNED FOR INSULATION BY OTHERS (NOT TO
 EXCEED 2.5 LBS/FT)**



- HX92103ND 8 BOLT
- H30314M 24 BOLT
- H04740M 24 NUT
- H02507M 24 WASHER
- H04190M 3 GASKET
- H30133M 8 BOLT
- H06454M 16 NUT
- H30134M 16 WASHER
- C03278M 2 GASKET
- H02209PA 1 INSTRUCTION SHEET
- H02446M 1 ALUM NAME PLATE
- H30447M 2 SST TIE BANDS

OPERATION	A	B	C	D
WELD				
MACHINE				
ASSY & TEST				
ASSY ONLY				
TEST ONLY				
PAINT				

1. HIGHLIGHT RECD OPERATIONS PER ASSY.
 2. RECORD CLOCK NO. WHEN COMPLETE.

DRAWN BY: JLP
 CHECKED BY: [Signature]
 QUOTE NO. [Blank]

SCALE: NONE
 DATE: 9/12/08
 DRAWING NO. [Blank]

4" B33F-G808

OPW **Engineered Systems**

R.H.