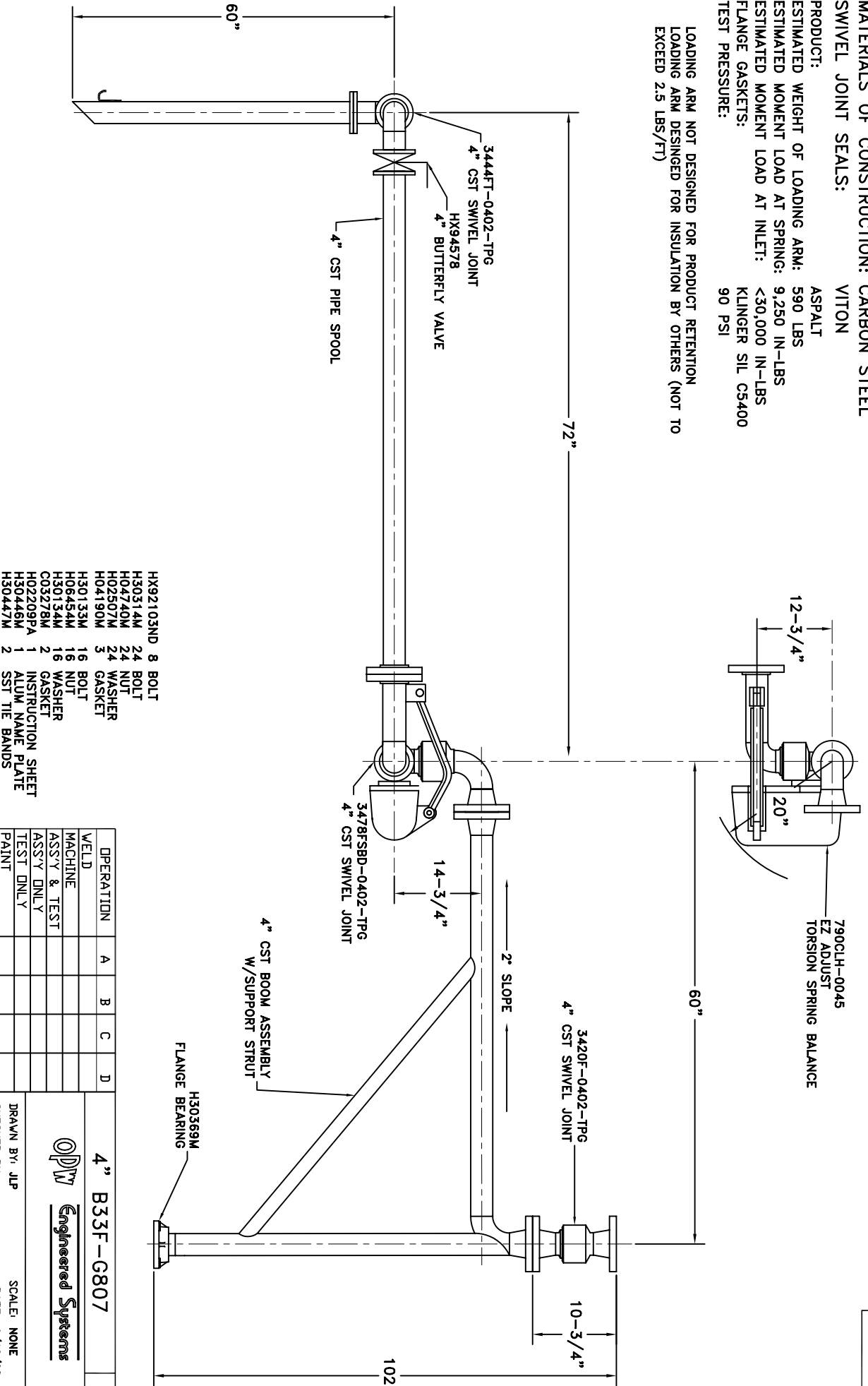


MATERIALS OF CONSTRUCTION: CARBON STEEL
SWIVEL JOINT SEALS: VITON

PRODUCT: ASPALT
 ESTIMATED WEIGHT OF LOADING ARM: 590 LBS
 ESTIMATED MOMENT LOAD AT SPRING: 9,250 IN-LBS
 ESTIMATED MOMENT LOAD AT INLET: <30,000 IN-LBS
 FLANGE GASKETS: KLINGER SIL CS400
 TEST PRESSURE: 90 PSI

LOADING ARM NOT DESIGNED FOR PRODUCT RETENTION
 LOADING ARM DESIGNED FOR INSULATION BY OTHERS (NOT TO EXCEED 2.5 LBS/FT)



- HX92103ND 8 BOLT
- H30314M 24 BOLT
- H04740M 24 NUT
- H02507M 24 WASHER
- H04190M 3 GASKET
- H30133M 16 BOLT
- H06454M 16 NUT
- H30134M 16 WASHER
- C03278M 2 GASKET
- H02209PA 1 INSTRUCTION SHEET
- H30446M 1 ALUM NAME PLATE
- H30447M 2 SST TIE BANDS

OPERATION	A	B	C	D
WELD				
MACHINE				
ASSY & TEST				
ASSY ONLY				
TEST ONLY				
PAINT				

1. HIGHLIGHT RECD OPERATIONS PER ASSY.
 2. RECORD CLOCK NO. WHEN COMPLETE.

DRAWN BY: JLP
 CHECKED BY:
 QUOTE NO.

4" B33F-G807

Engineered Systems

SCALE: NONE
 DATE: 9/12/08
 DRAWING NO.

L.H.