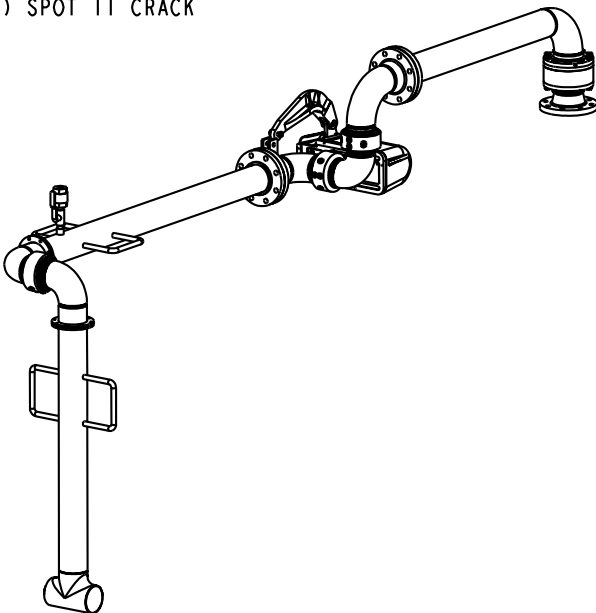


MATERIALS OF CONSTRUCTION	CARBON STEEL
SWIVEL JOINT SEALS	FLUOROCARBON GFLT
PRODUCT	ASPHALT
ESTIMATED WEIGHT	500 LBS
MOMENT LOAD AT SPRING	8950 IN-LBS
MOMENT LOAD AT INLET	30,200 IN-LBS
FLANGE GASKETS	KLINGER SIL C5400
TEST PRESSURE	90 PSI
PRODUCT RETENTION	NO
WEIGHT BY OTHERS	CONTROTRACE HEATING ELEMENTS INSULATION @ 2.5 LBS/FT

9	1	EA	790C-0050	RIGHT HAND EZ ADJUST 'C' SPRING BALANCE
8	2	EA	HX92646ND	PIPE NIPPLE, 1/2", CST
7	1	EA	HX95881	CHECK VALVE, 1/2", SST
6	1	EA	HX95880	BALL VALVE, SST, 1/2"
5	1	EA	8430FW	4" SWIVEL, ENDURA DSF, CST
4	1	EA	3476FSBLD-0402	4" SWIVEL, CST
3	1	EA	3440FT-0402	4" SWIVEL, CST
2	1	EA	N/A	4" CST PIPE SPOOL
1	1	EA	N/A	4" CST DROP PIPE SPOOL
ITEM	QTY	UN	PART NUMBER	DESCRIPTION

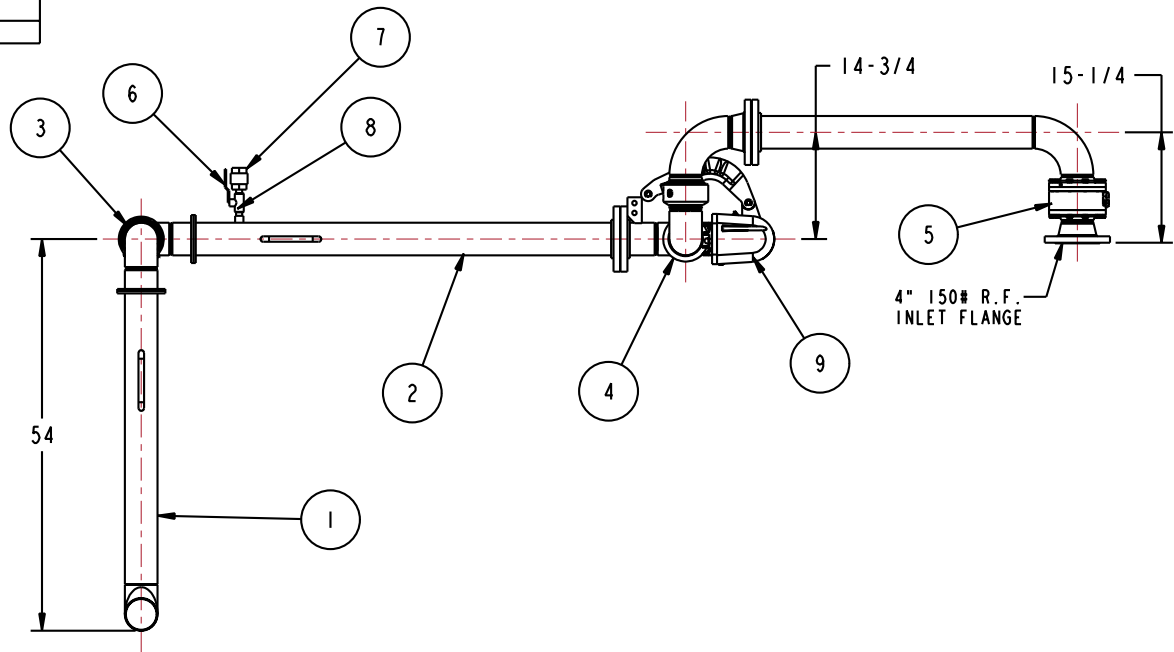
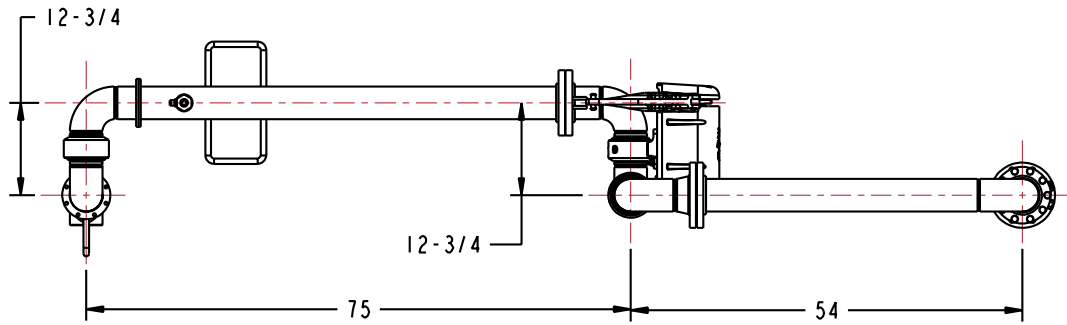
TAG LOADING ARMS  
(STAMP ON ALUM NAME PLATE)

- (1) SPOT 1 CRACK
- (1) SPOT 3 CRACK
- (1) SPOT 5 CRACK
- (1) SPOT 7 CRACK
- (1) SPOT 9 CRACK
- (1) SPOT 11 CRACK



THIS DRAWING IS NOT TO BE SCALED. FOR ADDITIONAL INFORMATION, PLEASE CONTACT OUR ENGINEERING DEPT.

REVISIONS					
LTR	ECN #	DESCRIPTION	DRAWN	APPROVED	DATE
-	-	-	-	-	-



CONFIDENTIAL THIS DOCUMENT CONTAINS INFORMATION WHICH IS PROPRIETARY TO OPW, AND SHOULD BE PROTECTED ACCORDINGLY.

DESCRIPTION: 4" TOP LOADING ARM, DFRH

SIGNATURES		MO-DA-YR
DRAWN: BJB		10/23/09
CHECKED:		
MATERIAL:	WEIGHT:	

REV: -  
SIZE: D

PART NUMBER:	<b>GT33F-H640</b>
SCALE:	0.080
SHEET	1 OF 4

**OPW Engineered Systems**  
A **ROBERT** Resources Company  
Lebanon, Ohio 45036 USA  
3D GENERATED DRAWING