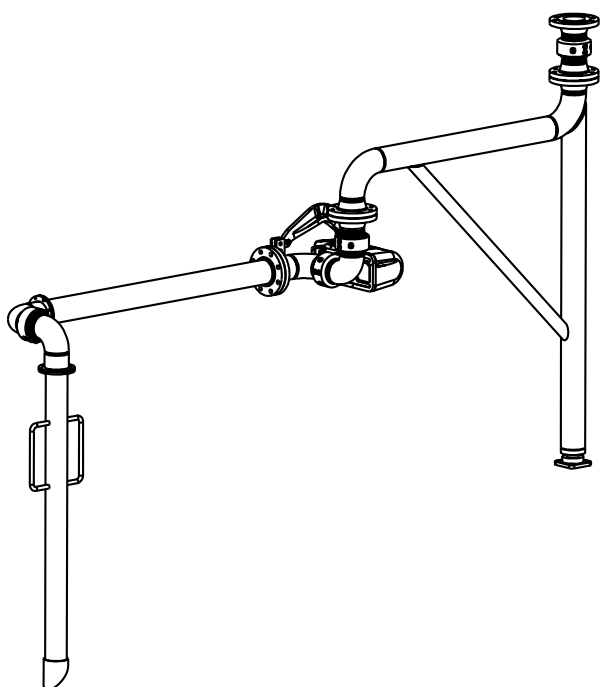
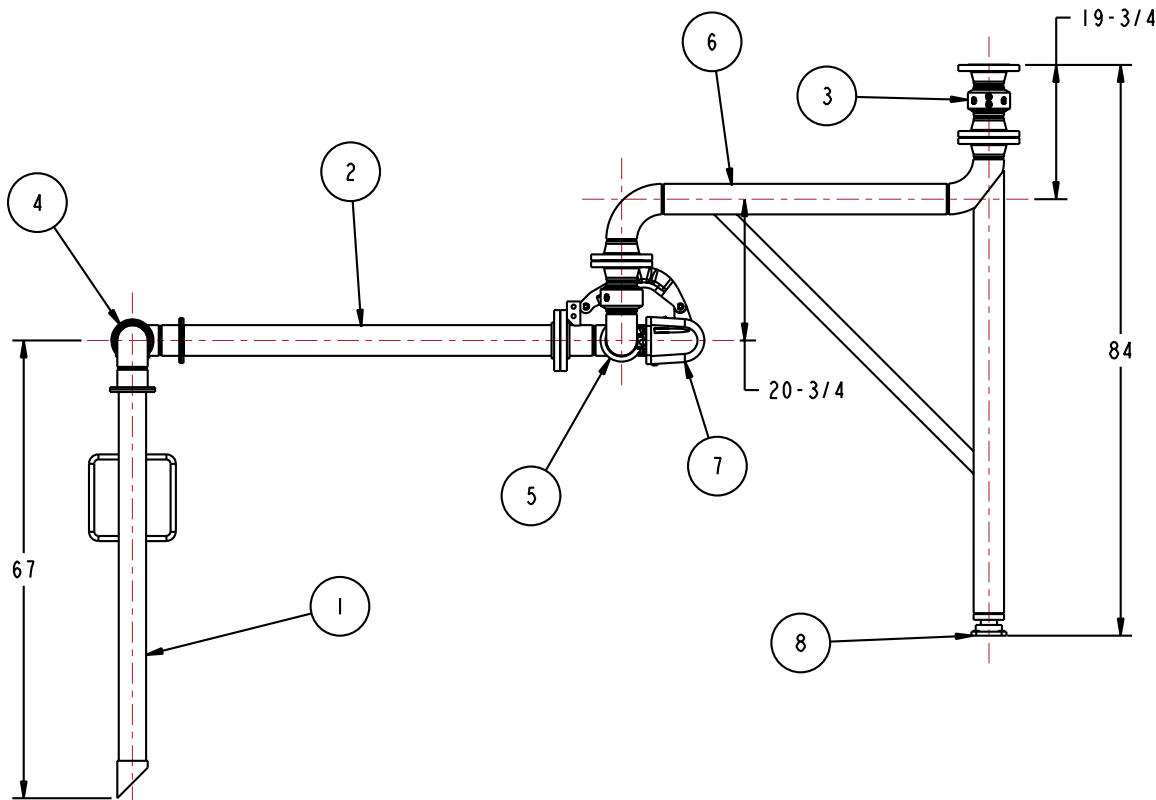
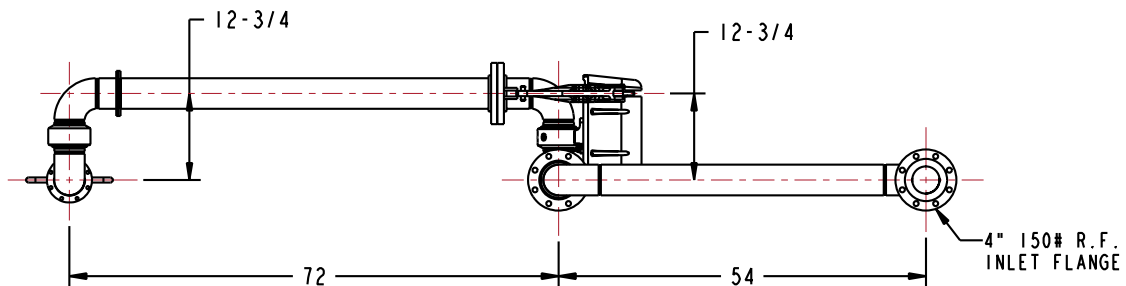


MATERIALS OF CONSTRUCTION	CARBON STEEL
SWIVEL JOINT SEALS	FLUOROCARBON
PRODUCT	ASPHALT
ESTIMATED WEIGHT	500 LBS
MOMENT LOAD AT SPRING	7,000 IN-LBS
MOMENT LOAD AT INLET	<26,600 IN-LBS
FLANGE GASKETS	KLINGER SIL C5400
TEST PRESSURE	90 PSI
DESIGNED FOR PRODUCT RETENTION	NO
ADDITIONAL WEIGHT BY OTHERS	NONE

ITEM	QTY	UM	PART NUMBER	DESCRIPTION
8	1	EA	H-30369-M	FLANGE BEARING
7	1	EA	790B-0030	EZ ADJUST TORSION SPRING BALANCE
6	1	EA	N/A	BOOM ASSY, CST, 4"
5	1	EA	3456FSBD-C784	4" SWIVEL, CST
4	1	EA	3440FFT-C783	4" SWIVEL, CST
3	1	EA	3420F-C427	4" SWIVEL, CST
2	1	EA	N/A	4" CST PIPE SPOOL
1	1	EA	N/A	4" CST DROP TUBE ASSY W. HANDLES

THIS DRAWING IS NOT TO BE SCALED. FOR ADDITIONAL INFORMATION, PLEASE CONTACT OUR ENGINEERING DEPT.

REVISIONS				DRAWN	APPROVED	DATE
LTR	ECN #	DESCRIPTION				
-	-	-	-	-	-	-



CONFIDENTIAL THIS DOCUMENT CONTAINS INFORMATION WHICH IS PROPRIETARY TO OPW, AND SHOULD BE PROTECTED ACCORDINGLY.

SIGNATURES		MO-DA-YR	REV:	DESCRIPTION:	
DRAWN: BJB	CHECKED:	1/19/09	-	4" LOADING ARM, RH	
MATERIAL:	WEIGHT:		SIZE: D	PART NUMBER:	OPW Engineered Systems
				B33F-H132	A BOSTED Resources Company
				SCALE: 0.075	Lebanon, Ohio 45036 USA
				SHEET 1 OF 3	3D GENERATED DRAWING