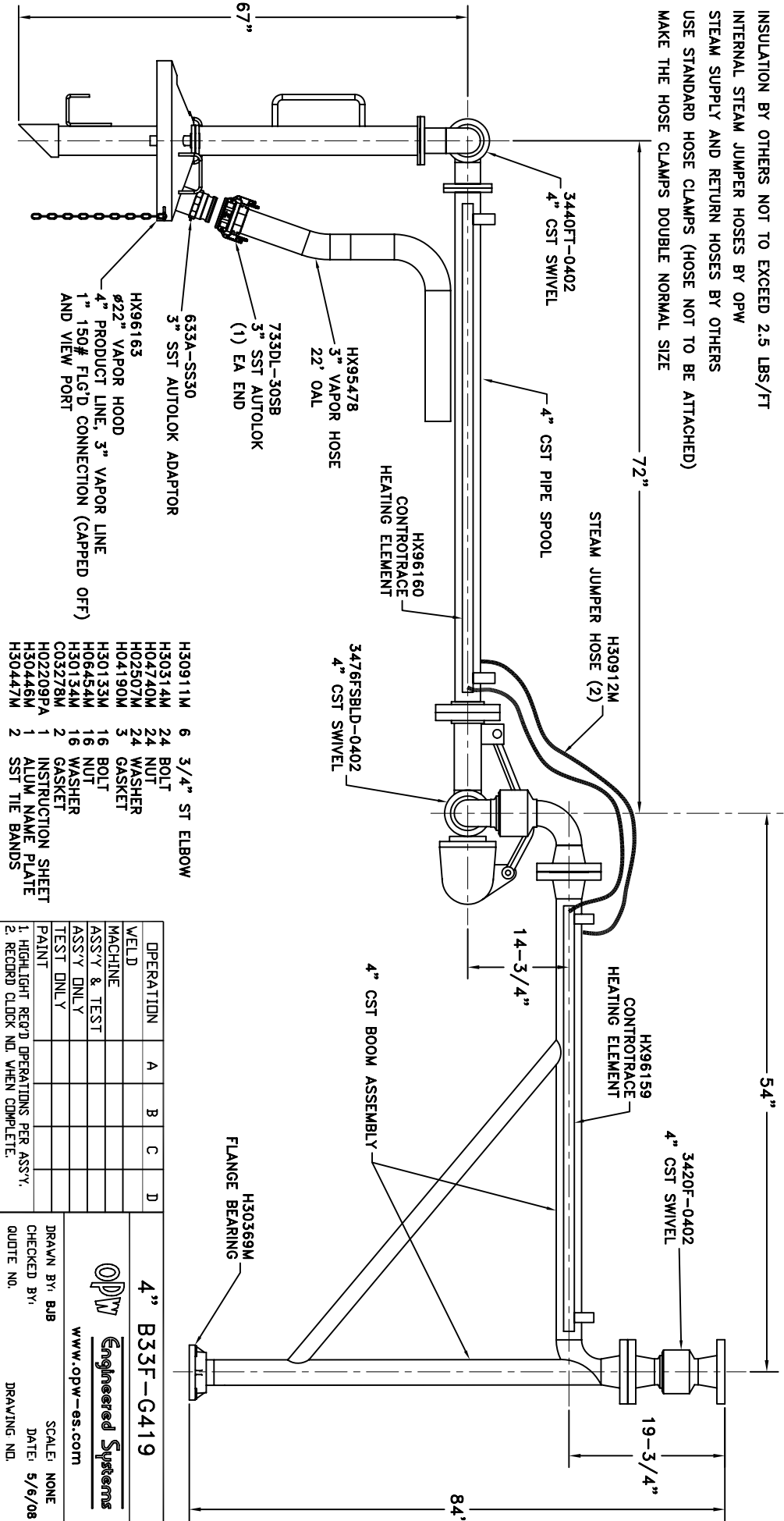


MATERIALS OF CONSTRUCTION: CARBON STEEL
SWIVEL JOINT SEALS: LO-TEMP FLUOROCARBON

PRODUCT: ASPHALT
 ESTIMATED WEIGHT OF LOADING ARM: 700 LBS
 ESTIMATED MOMENT LOAD AT SPRING: 12,950 IN-LBS
 ESTIMATED MOMENT LOAD AT INLET: <20,000 IN-LBS
 FLANGE GASKETS: KLINGER SIL CS400
 TEST PRESSURE: 90 PSI
 SWIVEL LUBE: TOM-PAC BEARING GEL (HX86606PA)
 LOADING ARM NOT DESIGNED FOR PRODUCT RETENTION

INSULATION BY OTHERS NOT TO EXCEED 2.5 LBS/FT
 INTERNAL STEAM JUMPER HOSES BY OPW
 STEAM SUPPLY AND RETURN HOSES BY OTHERS
 USE STANDARD HOSE CLAMPS (HOSE NOT TO BE ATTACHED)
 MAKE THE HOSE CLAMPS DOUBLE NORMAL SIZE



- HX96163
- 4" PRODUCT LINE, 3" VAPOR LINE
- 1" 150# FLGD CONNECTION (CAPPED OFF) AND VIEW PORT
- 633A-SS30
- 3" SST AUTOLOK ADAPTOR
- 733DL-30SB
- 3" SST AUTOLOK
- (1) EA END
- HX95478
- 3" VAPOR HOSE
- 22' OAL
- HX96160
- CONTRORTRACE HEATING ELEMENT
- H30912M
- STEAM JUMPER HOSE (2)
- 3476FSBLD-0402
- 4" CST SWIVEL
- HX96159
- CONTRORTRACE HEATING ELEMENT
- 14-3/4"
- 4" CST BOOM ASSEMBLY
- H30369M
- FLANGE BEARING

- H30911M
- 6
- 3/4" ST ELBOW
- H30314M
- 24
- BOLT
- H04740M
- 24
- WASHER
- H02507M
- 3
- GASKET
- H04190M
- 16
- BOLT
- H30133M
- 16
- WASHER
- H06454M
- 16
- GASKET
- H30134M
- 2
- INSTRUCTION SHEET
- H02209PA
- 1
- ALUM NAME PLATE
- H30446M
- 2
- SST TIE BANDS
- H30447M

OPERATION	A	B	C	D
WELD				
MACHINE				
ASSY & TEST				
ASSY ONLY				
TEST ONLY				
TEST ONLY				
PAINT				

1. HIGH LIGHT RECD. OPERATIONS PER ASSY.
 2. RECORD CLOCK NO. WHEN COMPLETE.

4" B33F-G419

OPW **Engineered Systems**
 www.opw-es.com

DRAWN BY: BUB
 CHECKED BY: []
 SCALE: NONE
 DATE: 5/6/08
 DRAWING NO. []

R.H.