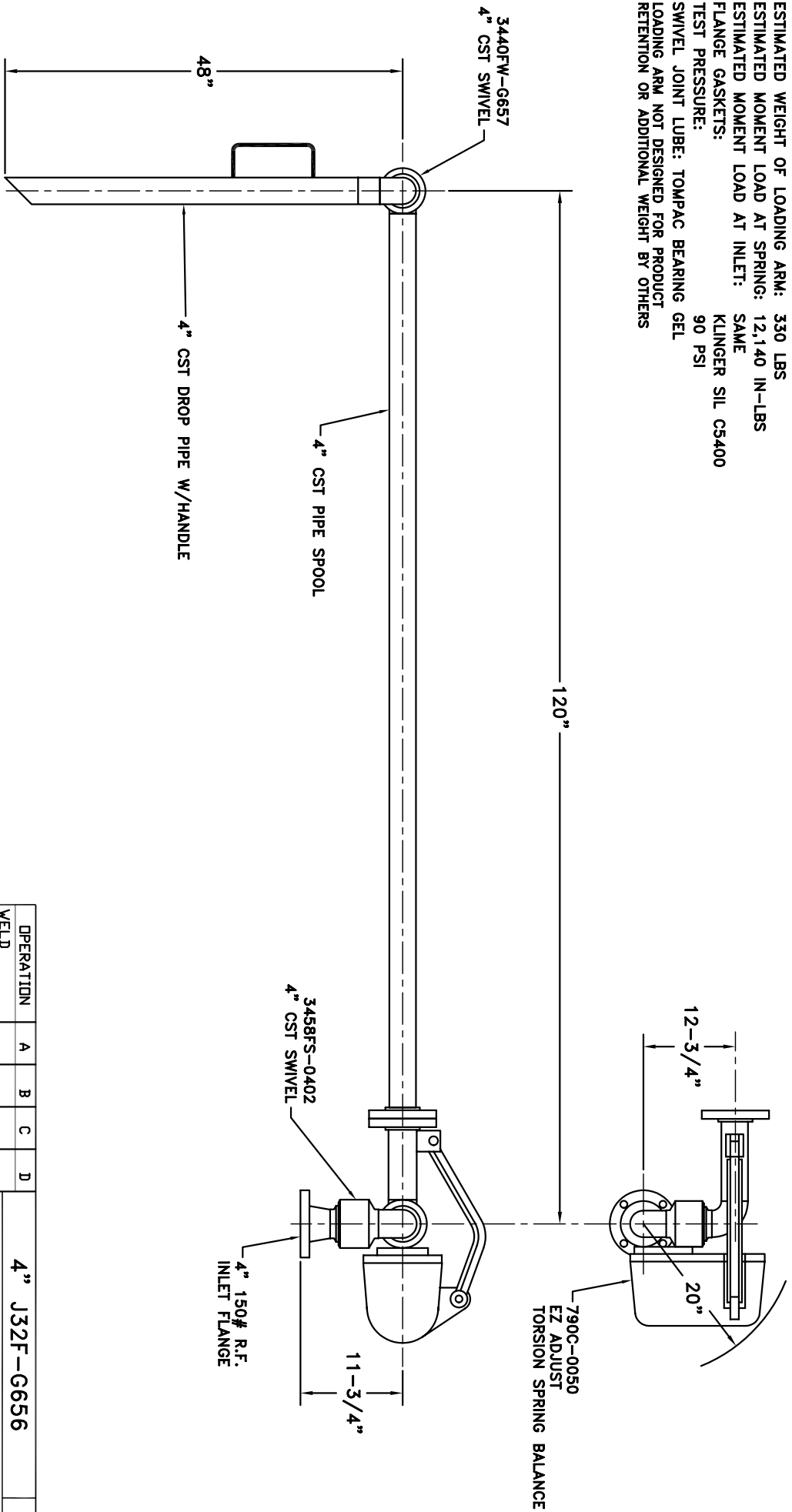


MATERIALS OF CONSTRUCTION: CARBON STEEL  
 SWIVEL JOINT SEALS: VITON (-15°F TO +400°F)

PRODUCT: ASPHALT  
 ESTIMATED WEIGHT OF LOADING ARM: 330 LBS  
 ESTIMATED MOMENT LOAD AT SPRING: 12,140 IN-LBS  
 ESTIMATED MOMENT LOAD AT INLET: SAME  
 FLANGE GASKETS: KLINGER SIL CS400  
 TEST PRESSURE: 90 PSI  
 SWIVEL JOINT LUBE: TOMPAC BEARING GEL  
 LOADING ARM NOT DESIGNED FOR PRODUCT RETENTION OR ADDITIONAL WEIGHT BY OTHERS



H30314M	8	BOLT
H04740M	8	NUT
H02507M	8	WASHER
H04190M	1	GASKET
H02209PA	1	INSTRUCTION SHEET
H30446M	1	ALUM NAME PLATE
H30447M	2	SST TIE BANDS

OPERATION	A	B	C	D
WELD				
MACHINE				
ASSY & TEST				
ASSY ONLY				
TEST ONLY				
PAINT				

1. HIGH LIGHT RECD. OPERATIONS PER ASSY.  
 2. RECORD CLOCK NO. WHEN COMPLETE.

4" J32F-G656

**OPW** **Engineered Systems**  
 www.opw-es.com

DRAWN BY: BUB  
 CHECKED BY: [ ]  
 SCALE: NONE  
 DATE: 8/4/08  
 DRAWING: ND.