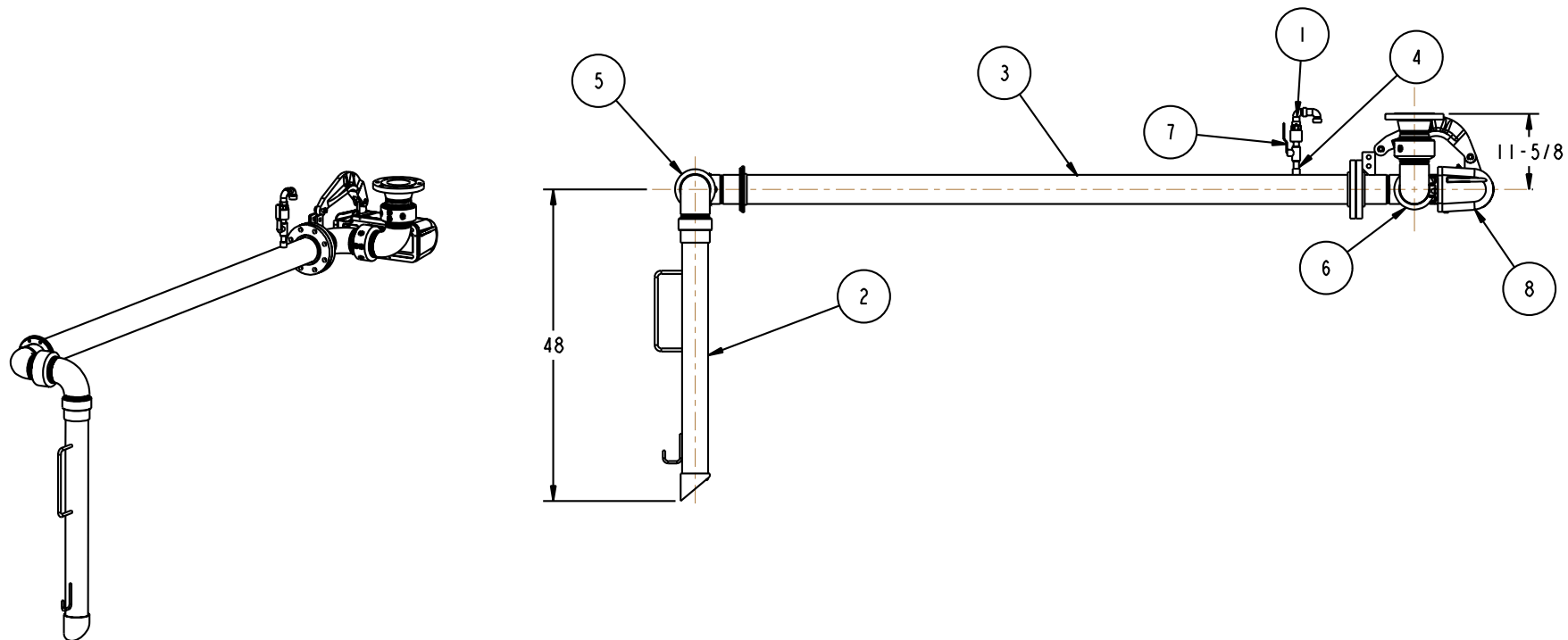
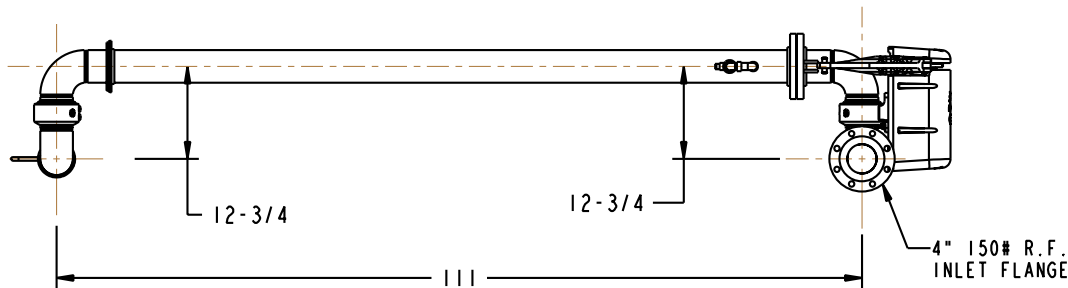


MATERIALS OF CONSTRUCTION	CARBON STEEL
SWIVEL JOINT SEALS	FLUOROCARBON
PRODUCT	ASPHALT
ESTIMATED WEIGHT	300 LBS
MOMENT LOAD AT SPRING	10,500 IN-LBS
FLANGE GASKETS	GARLOCK
TEST PRESSURE	90 PSI
PRODUCT RETENTION	NO
WEIGHT BY OTHERS	2.5 LBS/FT

8	I	EA	790C-0050	RIGHT HAND EZ ADJUST 'C' SPRING BALANCE
7	I	EA	HX98284	BALL VALVE, FNPT, CST, 1/2"
6	I	EA	3456FSBD	4" SWIVEL, CST
5	I	EA	3440FTO	4" SWIVEL, CST
4	I	IN	HX92646ND	4" SCH 40 CST PIPE
3	I	EA	N/A	4" CST PIPE SPOOL
2	I	EA	N/A	4" CST DROP TUBE ASSY
1	I	EA	489-0050	1/2" SST VACUUM BREAKER
ITEM	QTY	UM	PART NUMBER	DESCRIPTION

THIS DRAWING IS NOT TO BE SCALED. FOR ADDITIONAL INFORMATION, PLEASE CONTACT OUR ENGINEERING DEPT.

REVISIONS					
LTR	ECN #	DESCRIPTION	DRAWN	APPROVED	DATE
-	-	-	-	-	-



CONFIDENTIAL THIS DOCUMENT CONTAINS INFORMATION WHICH IS PROPRIETARY TO OPW, AND SHOULD BE PROTECTED ACCORDINGLY.

DESCRIPTION: 4" TOP LOADING ARM, DFRH

SIGNATURES		MO-DA-YR
DRAWN: JLP		2/25/10
CHECKED: -		-
MATERIAL:	WEIGHT:	-

REV: -	PART NUMBER:
SIZE: D	<b>J33F-H850</b>
SCALE: 0.080	SHEET 1 OF 2

**OPW Engineered Systems**  
 A **ROBERT** Resources Company  
 Lebanon, Ohio 45036 USA  
 3D GENERATED DRAWING