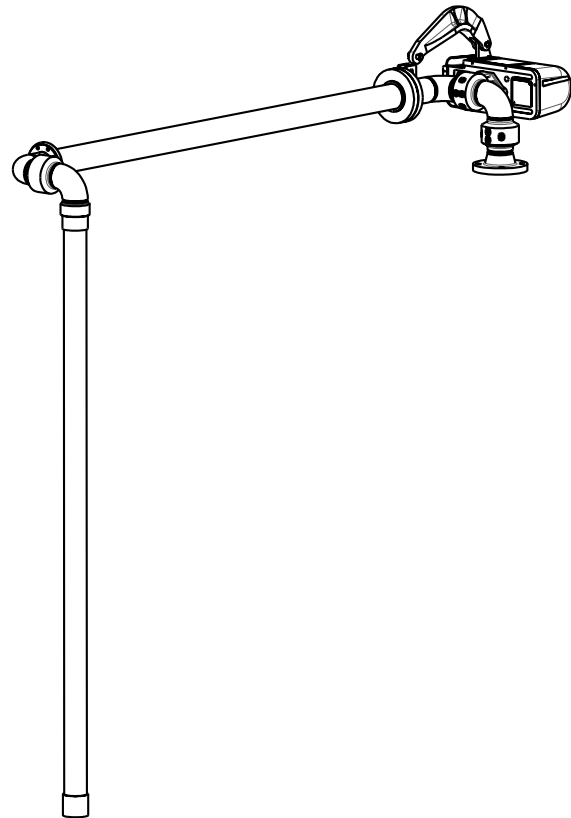
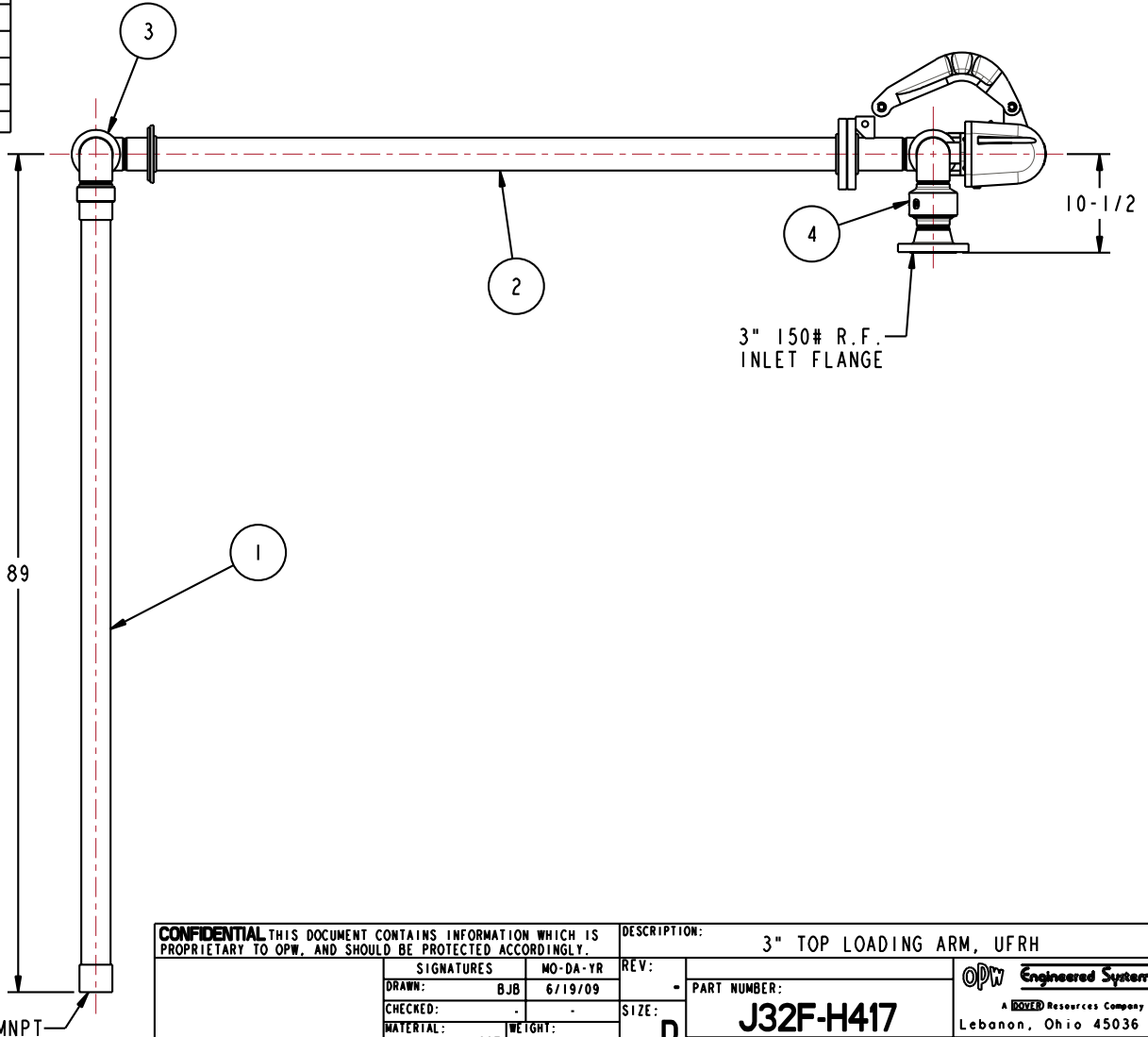
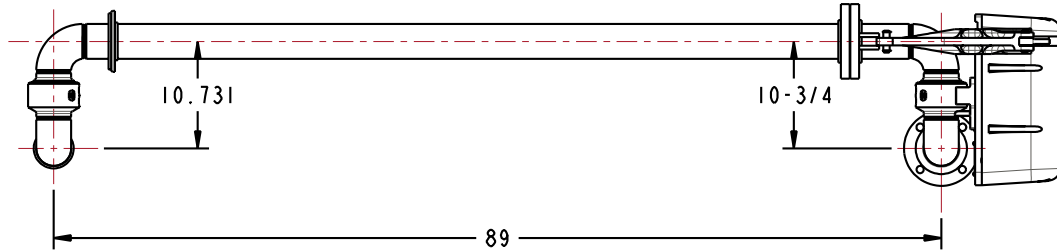


MATERIALS OF CONSTRUCTION	CARBON STEEL
SWIVEL JOINT SEALS	FLUOROCARBON
PRODUCT	ASPHALT EMULSION
ESTIMATED WEIGHT	250 LBS
MOMENT LOAD AT SPRING	6750 IN-LBS
FLANGE GASKETS	KLINGER SIL C5400
TEST PRESSURE	90 PSI
PRODUCT RETENTION	NO
WEIGHT BY OTHERS	NONE

5	1	EA	790B-0030	EZ ADJUST TORSION SPRING BALANCE
4	1	EA	3458FSB-0302	3" SWIVEL, CST
3	1	EA	3440FTO-0302	3" SWIVEL, CST
2	1	EA	N/A	3" CST PIPE SPOOL
1	1		N/A	3" CST DROP TUBE
ITEM	QTY	UM	PART NUMBER	DESCRIPTION

THIS DRAWING IS NOT TO BE SCALED. FOR ADDITIONAL INFORMATION, PLEASE CONTACT OUR ENGINEERING DEPT.

REVISIONS					
LTR	ECN #	DESCRIPTION	DRAWN	APPROVED	DATE
-	-	-	-	-	-



CONFIDENTIAL THIS DOCUMENT CONTAINS INFORMATION WHICH IS PROPRIETARY TO OPW, AND SHOULD BE PROTECTED ACCORDINGLY.

SIGNATURES		MO-DA-YR	REV:	DESCRIPTION: 3" TOP LOADING ARM, UFRH	
DRAWN:	BJB	6/19/09	-	PART NUMBER: J32F-H417	
CHECKED:	-	-	SIZE: D	SCALE: 0.110 SHEET 1 OF 2	
MATERIAL:	CST	WEIGHT:	-	3D GENERATED DRAWING	

OPW **Engineered Systems**
A **ROBERT** Resources Company
Lebanon, Ohio 45036 USA