

MATERIALS OF CONSTRUCTION: CARBON STEEL/ ALUMINUM  
 SWIVEL JOINT SEALS: VITON (-15°F TO +400°F)

PRODUCT: ASPHALT/ ASPHALT EMULSIONS

ESTIMATED WEIGHT OF LOADING ARM: 230 LBS

ESTIMATED MOMENT LOAD AT SPRING: 5,200 IN-LBS

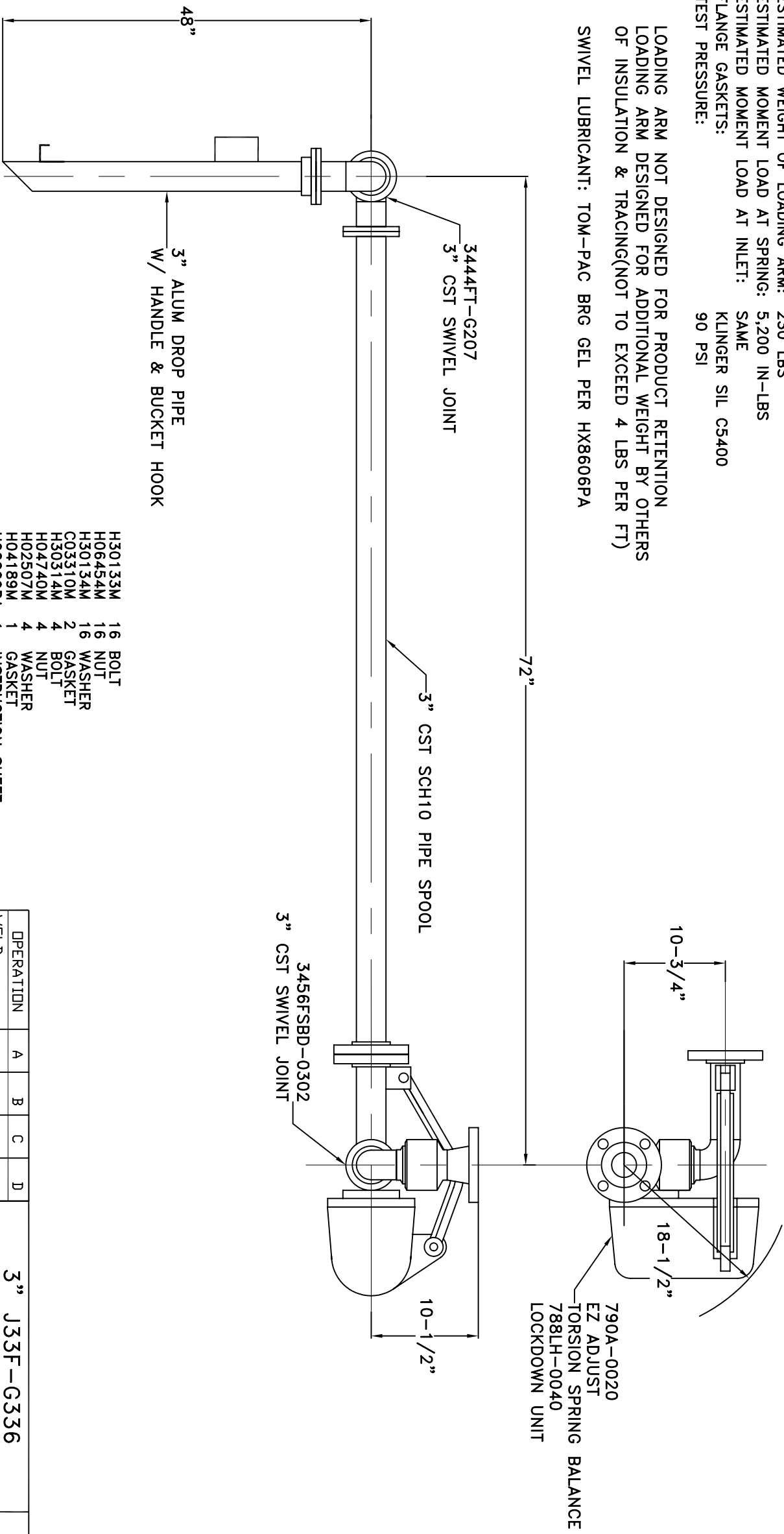
ESTIMATED MOMENT LOAD AT INLET: SAME

FLANGE GASKETS: KLINGER SIL C5400

TEST PRESSURE: 90 PSI

LOADING ARM NOT DESIGNED FOR PRODUCT RETENTION  
 LOADING ARM DESIGNED FOR ADDITIONAL WEIGHT BY OTHERS  
 OF INSULATION & TRACING(NOT TO EXCEED 4 LBS PER FT)

SWIVEL LUBRICANT: TOM-PAC BRG GEL PER HX8606PA



- H30133M 16 BOLT
- H06454M 16 NUT
- H30134M 16 WASHER
- C03310M 2 GASKET
- H30314M 4 BOLT
- H04740M 4 NUT
- H02507M 4 WASHER
- H04189M 1 GASKET
- H02209PA 1 INSTRUCTION SHEET
- H30446M 1 ALUM NAME PLATE
- H30447M 2 SST TIE BANDS

OPERATION	A	B	C	D
WELD				
MACHINE				
ASS'Y & TEST				
ASS'Y ONLY				
TEST ONLY				
PAINT				

1. HIGHLIGHT REQ'D OPERATIONS PER ASS'Y.  
 2. RECORD CLODK NO. WHEN COMPLETE.

**3" J33F-G336**

**OPW** **Engineered Systems**  
 www.opw-es.com

DRAWN BY: JLP  
 CHECKED BY:  
 QUOTE NO. 70133

SCALE: NONE  
 DATE: 3/17/08  
 DRAWING NO. SK70133A2