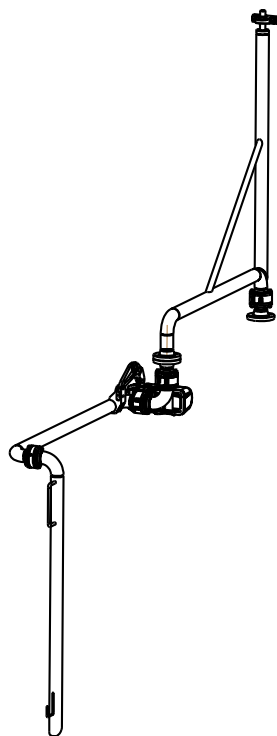
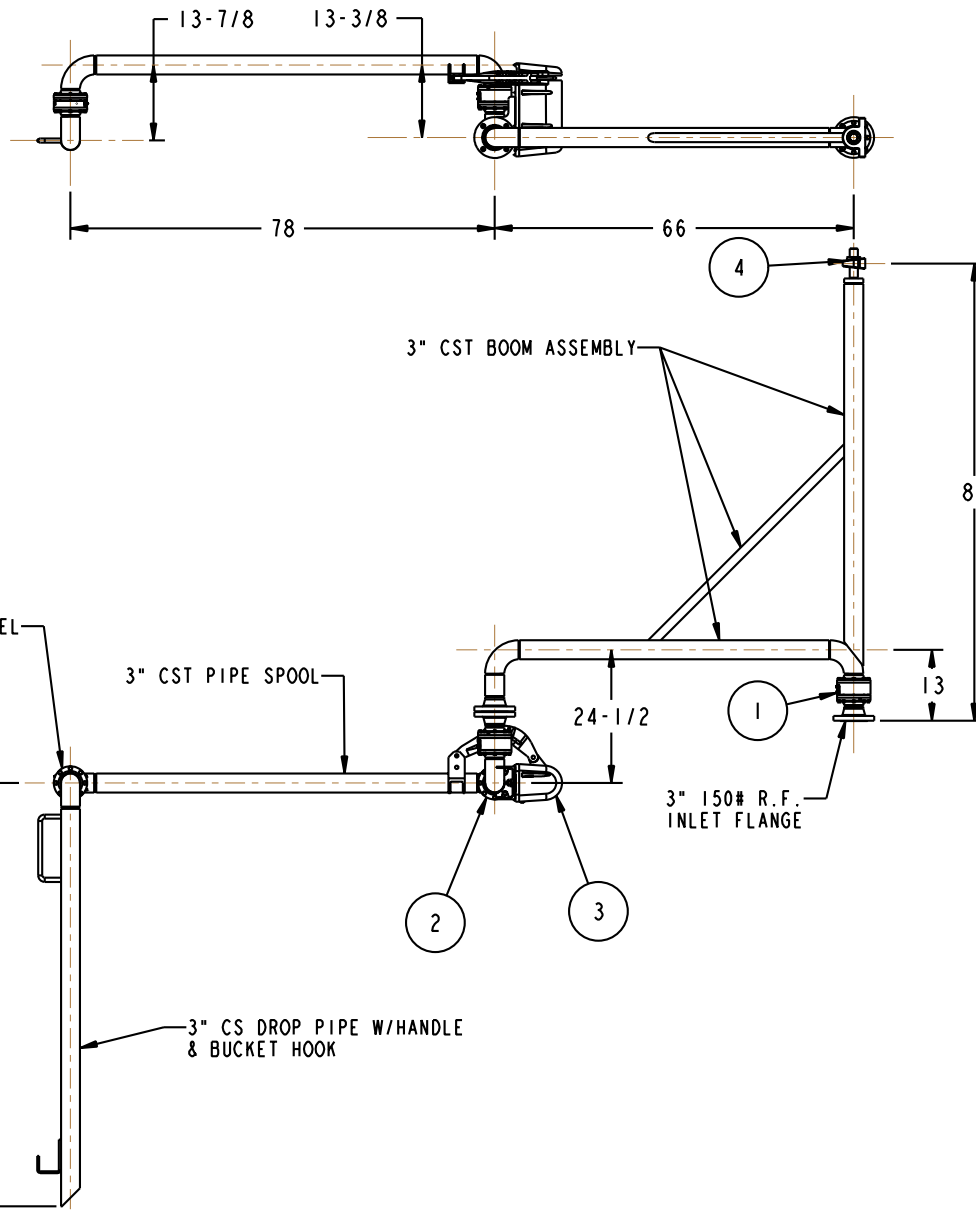


MATERIALS OF CONSTRUCTION	CARBON STEEL
SWIVEL JOINT SEALS	FLUOROCARBON
PRODUCT	ASPHALT
ESTIMATED WEIGHT	530 LBS
MOMENT LOAD AT SPRING	9,200 IN-LBS
MOMENT LOAD AT INLET	36,000 IN-LBS
FLANGE GASKETS	KLINGER SIL C5400
TEST PRESSURE	90 PSI
PRODUCT RETENTION	NO
WEIGHT BY OTHERS	YES (INSULATION 3.5LB/FT)

4	1	EA	H-01180-M	PILLOW BLOCK BEARING
3	1	EA	790C-0050	EZ ADJUST TORSION SPRING BALANCE
2	1	EA	8456FWD	3" SWIVEL, ENDURA DSF, CST
1	1	EA	8430F	3" SWIVEL, ENDURA DSF, CST
ITEM	QTY	UM	PART NUMBER	DESCRIPTION

THIS DRAWING IS NOT TO BE SCALED. FOR ADDITIONAL INFORMATION, PLEASE CONTACT OUR ENGINEERING DEPT.

REVISIONS					
LTR	ECN #	DESCRIPTION	DRAWN	APPROVED	DATE
-	-	-	-	-	-



CONFIDENTIAL THIS DOCUMENT CONTAINS INFORMATION WHICH IS PROPRIETARY TO OPW, AND SHOULD BE PROTECTED ACCORDINGLY.

DESCRIPTION: 3" LOADING ARM, SKI8558H1

UNLESS OTHERWISE SPECIFIED
 TOLERANCES ON DIMENSIONS
 3 DECIMALS +/- 0.005
 2 DECIMALS +/- 0.015
 1 DECIMAL +/- 0.030
 ANGLES +/- 1/2 DEG
 MACHINED SURFACES 125 RMS MAX

SIGNATURES		MO-DA-YR
DRAWN:	JLP	4/28/09
CHECKED:	-	-
MATERIAL:	WEIGHT:	-

REV: -
 SIZE: D

PART NUMBER:
EB33F-H303

OPW **Engineered Systems**
 A **ROBERT** Resources Company
 Lebanon, Ohio 45036 USA
 SCALE: 0.070 SHEET 1 OF 4 3D GENERATED DRAWING