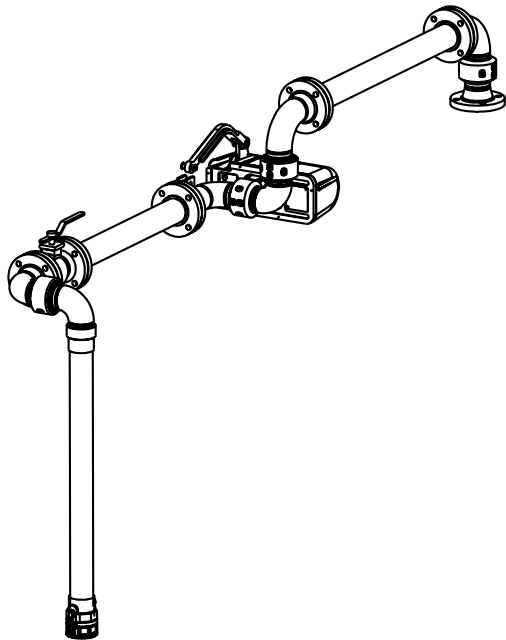
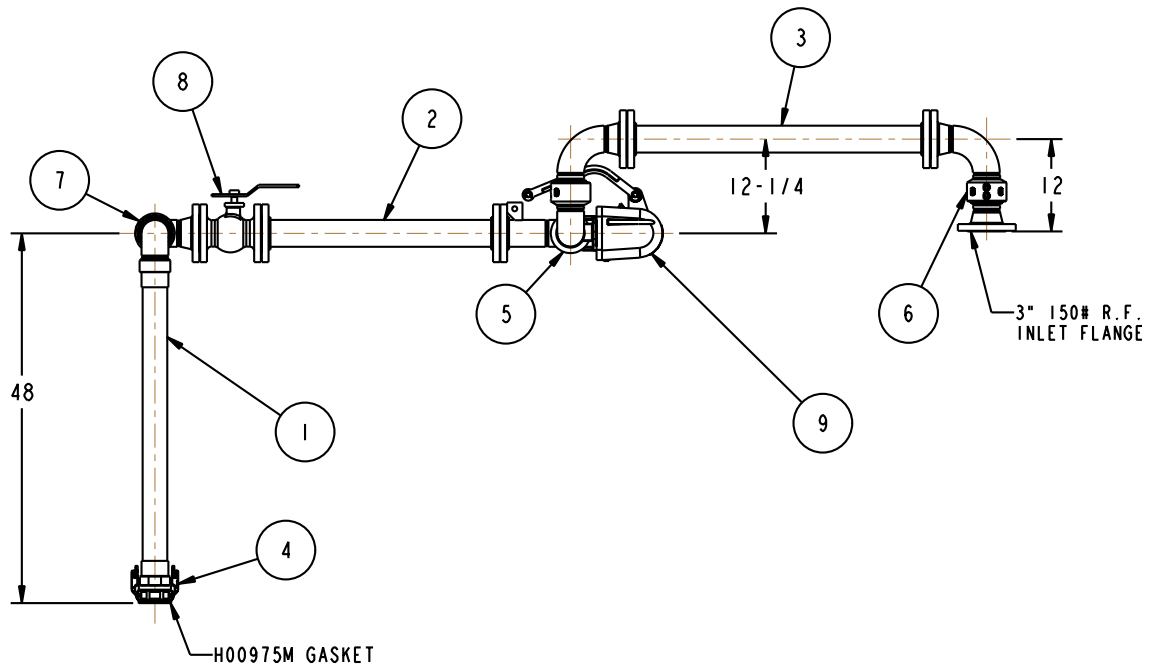
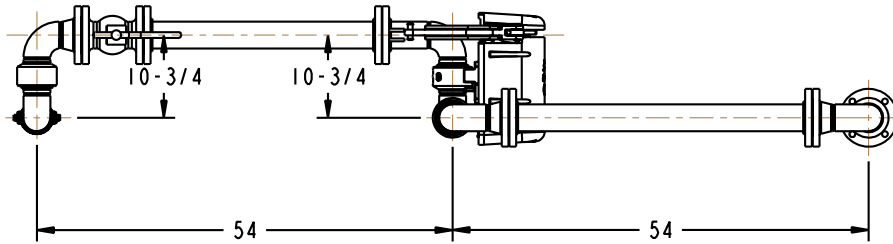


MATERIALS OF CONSTRUCTION	CARBON STEEL
SWIVEL JOINT SEALS	FLUOROCARBON
PRODUCT	ASPHALT EMULSION WATER
ESTIMATED WEIGHT	370 LBS
MOMENT LOAD AT SPRING	5,800 IN-LBS
MOMENT LOAD AT INLET	22,300 IN-LBS
FLANGE GASKETS	KLINGER SIL C5400
TEST PRESSURE	135 PSI
PRODUCT RETENTION	NO
WEIGHT BY OTHERS	NO

ITEM	QTY	UM	PART NUMBER	DESCRIPTION
9	1	EA	790A-0020	RIGHT HAND EZ ADJUST 'A' SPRING
8	1	EA	HX98380	BALL VALVE, FNPT, 3"
7	1	EA	3440FO-0302	3" SWIVEL, CST
6	1	EA	3430FL-0302	3" SWIVEL ASSY, ENDURA DSF, CST
5	1	EA	3476FSBLD-0302	3" SWIVEL ASSY, CST
4	1	EA	733DL-30SB	3" SST AUTOLOK COUPLER
3	1	EA	N/A	3" CST PIPE SPOOL
2	1	EA	N/A	3" CST OBR PIPE SPOOL
1	1	EA	N/A	3" CST DROP PIPE SPOOL

THIS DRAWING IS NOT TO BE SCALED. FOR ADDITIONAL INFORMATION, PLEASE CONTACT OUR ENGINEERING DEPT.

REVISIONS					
LTR	ECN #	DESCRIPTION	DRAWN	APPROVED	DATE
-	-	-	-	-	-



CONFIDENTIAL THIS DOCUMENT CONTAINS INFORMATION WHICH IS PROPRIETARY TO OPW, AND SHOULD BE PROTECTED ACCORDINGLY.

DESCRIPTION:

3" TOP LOADING ARM, DFRH

SIGNATURES	MO-DA-YR
DRAWN: JLP	4/12/10
CHECKED:	
MATERIAL:	WEIGHT:

REV: -
SIZE: D

PART NUMBER:
GT33F-H920

OPW **Engineered Systems**
A **ROBERT** Resources Company
Lebanon, Ohio 45036 USA
3D GENERATED DRAWING

SCALE: 0.085 SHEET 1 OF 2