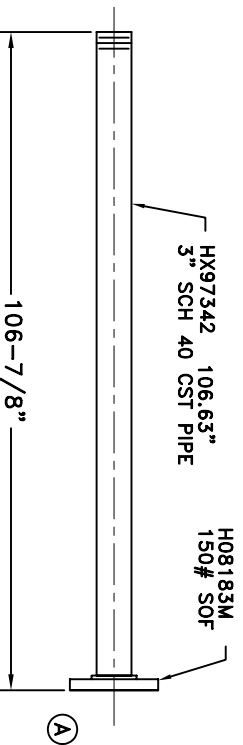
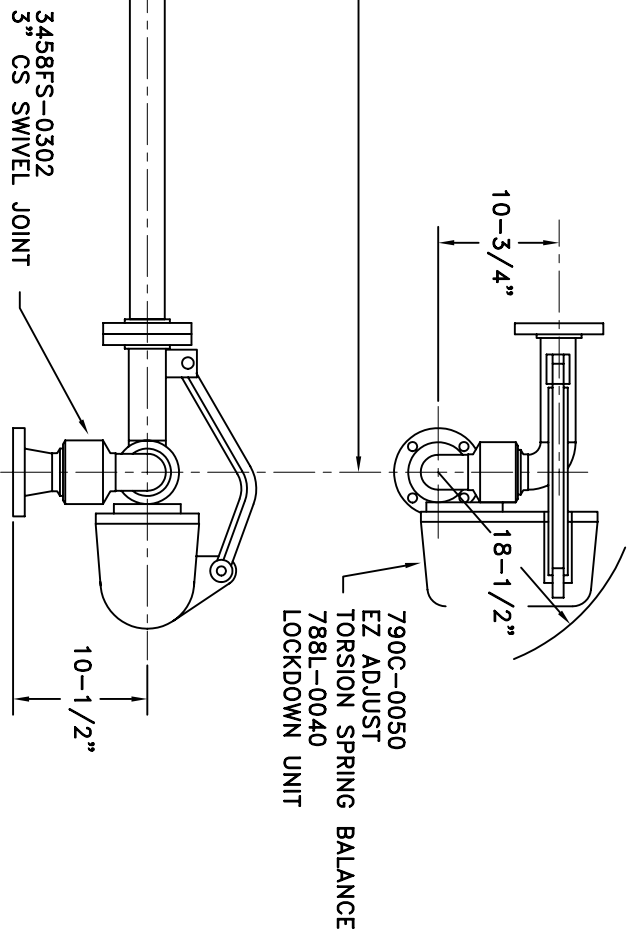
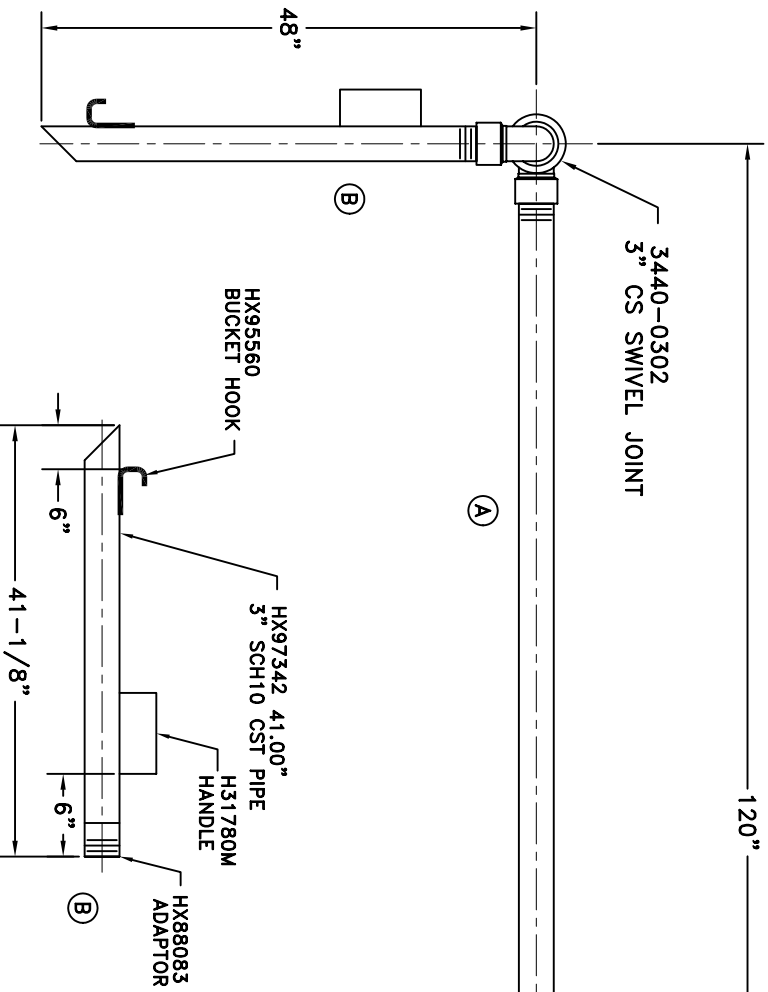


MATERIALS OF CONSTRUCTION: CARBON STEEL
 SWIVEL JOINT SEALS: FLUOROCARBON

PRODUCT: ASPHALT
 ESTIMATED WEIGHT OF LOADING ARM: 300 lbs
 ESTIMATED MOMENT LOAD AT SPRING: 12,000 In-lbs
 ESTIMATED MOMENT LOAD AT INLET: SAME
 FLANGE GASKETS: KLINGER SIL CS400
 TEST PRESSURE: N/A

LOADING ARM NOT DESIGNED FOR PRODUCT RETENTION
 LOADING ARM NOT DESIGNED FOR ADDITIONAL WEIGHT BY OTHERS
 INSULATION AND TRACING BY OPW PER HX97343



OPERATION	A	B	C	D	
WELD					3" J32F-H244
MACHINE					
ASSY & TEST					
ASSY ONLY					
TEST ONLY					
PAINT					

1. HIGH LIGHT RECD. OPERATIONS PER ASSY.
 2. RECORD CLOCK NO. WHEN COMPLETE.

DRAWN BY: JLP
 CHECKED BY: [Signature]
 QUOTE NO. [Blank]
 SCALE: NONE
 DATE: 3/16/09
 DRAWING NO. [Blank]

OPW *Engineered Systems*