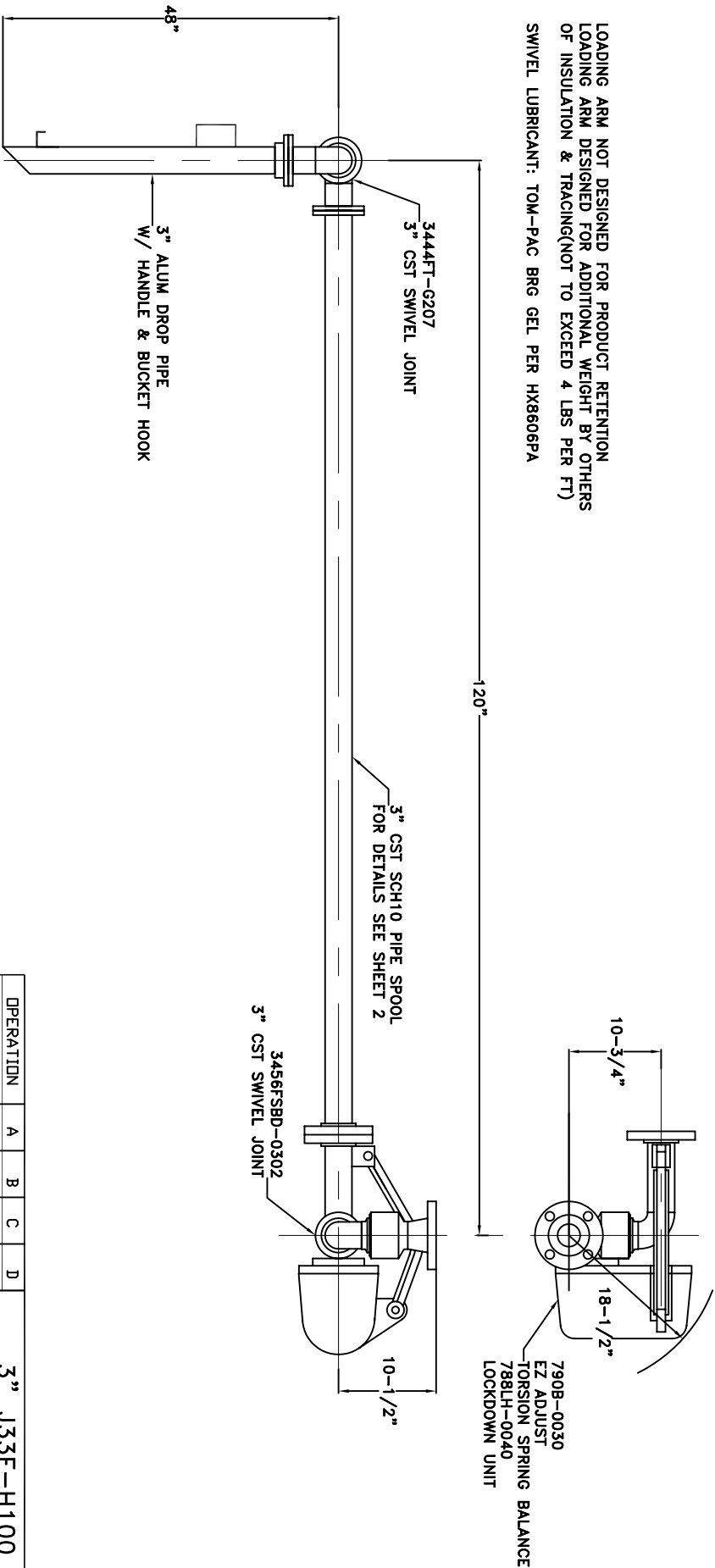


MATERIALS OF CONSTRUCTION: CARBON STEEL/ ALUMINUM
 SWIVEL JOINT SEALS: FLUOROCARBON (-15°F TO +400°F)

PRODUCT: ASPHALT/ ASPHALT EMULSIONS
 ESTIMATED WEIGHT OF LOADING ARM: 230 LBS
 ESTIMATED MOMENT LOAD AT SPRING: 7,626 IN-LBS
 ESTIMATED MOMENT LOAD AT INLET: SAME
 FLANGE GASKETS: KLINGER SIL C5400
 TEST PRESSURE: 90 PSI

LOADING ARM NOT DESIGNED FOR PRODUCT RETENTION
 LOADING ARM DESIGNED FOR ADDITIONAL WEIGHT BY OTHERS
 OF INSULATION & TRACING(NOT TO EXCEED 4 LBS PER FT)
 SWIVEL LUBRICANT: TOM-PAC BRG GEL PER HX8606PA



| OPERATION | A | B | C | D |
|-------------|---|---|---|---|
| WELD | | | | |
| MACHINE | | | | |
| ASSY & TEST | | | | |
| ASSY ONLY | | | | |
| TEST ONLY | | | | |
| PAINT | | | | |

1. HIGHLIGHT REQ'D OPERATIONS PER ASSY.
 2. RECORD CLOCK NO. WHEN COMPLETE.

3" J33F-H100

OPW *Engineered Systems*
 www.opw-es.com

DRAWN BY: SCK SCALE: NONE
 CHECKED BY: DATE: 01/07/09
 QUOTE NO. DRAWING NO.