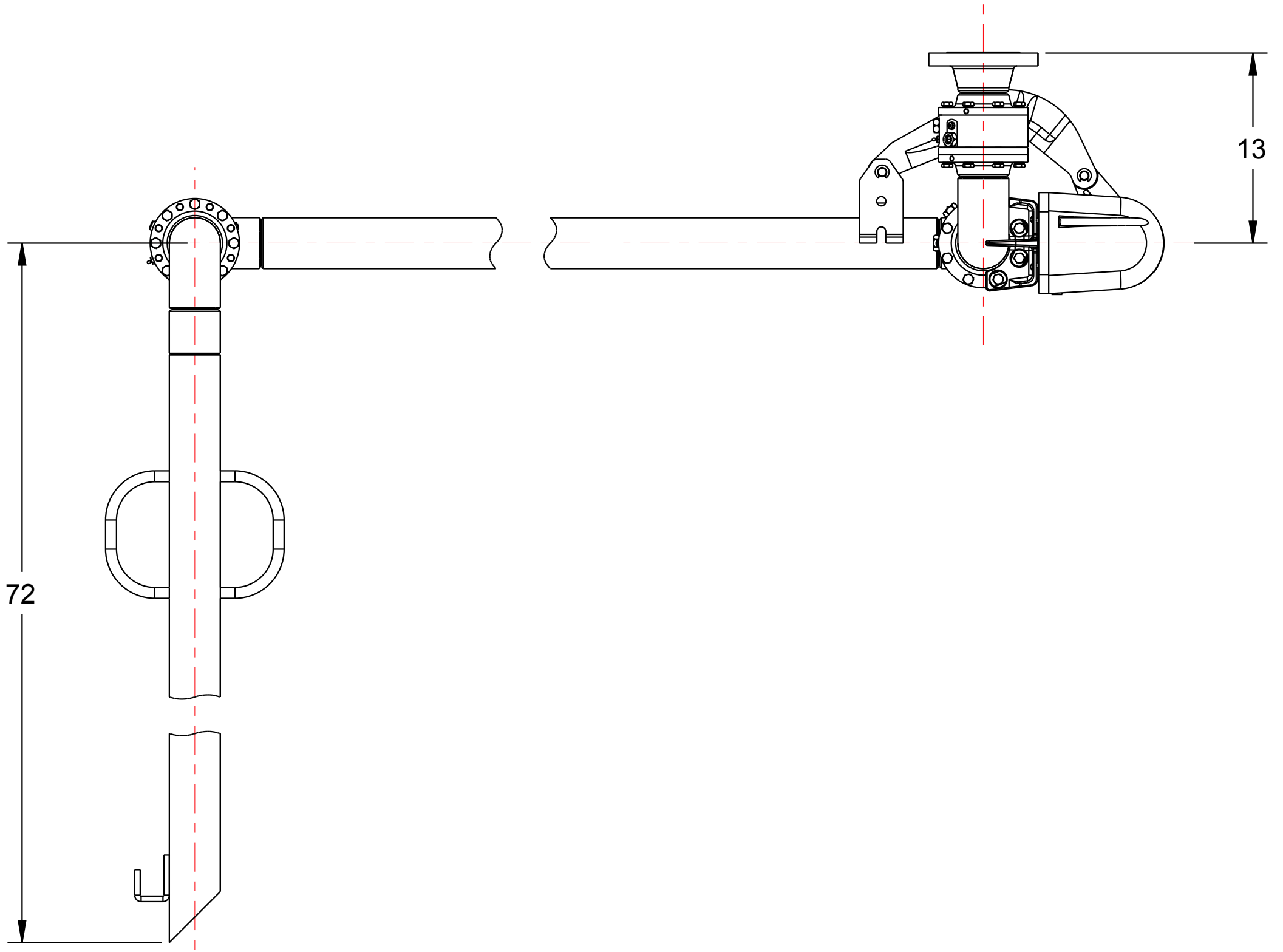
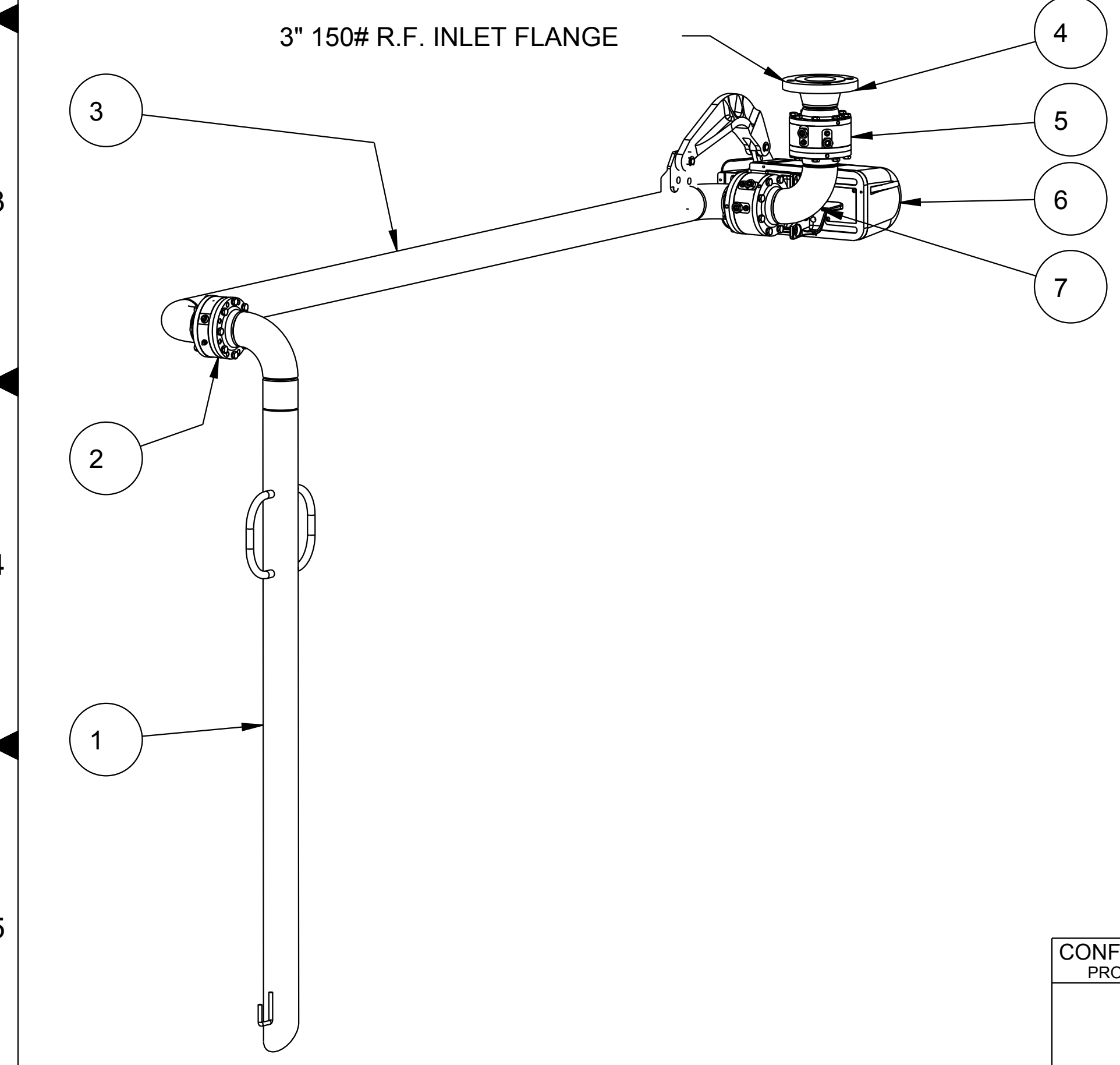
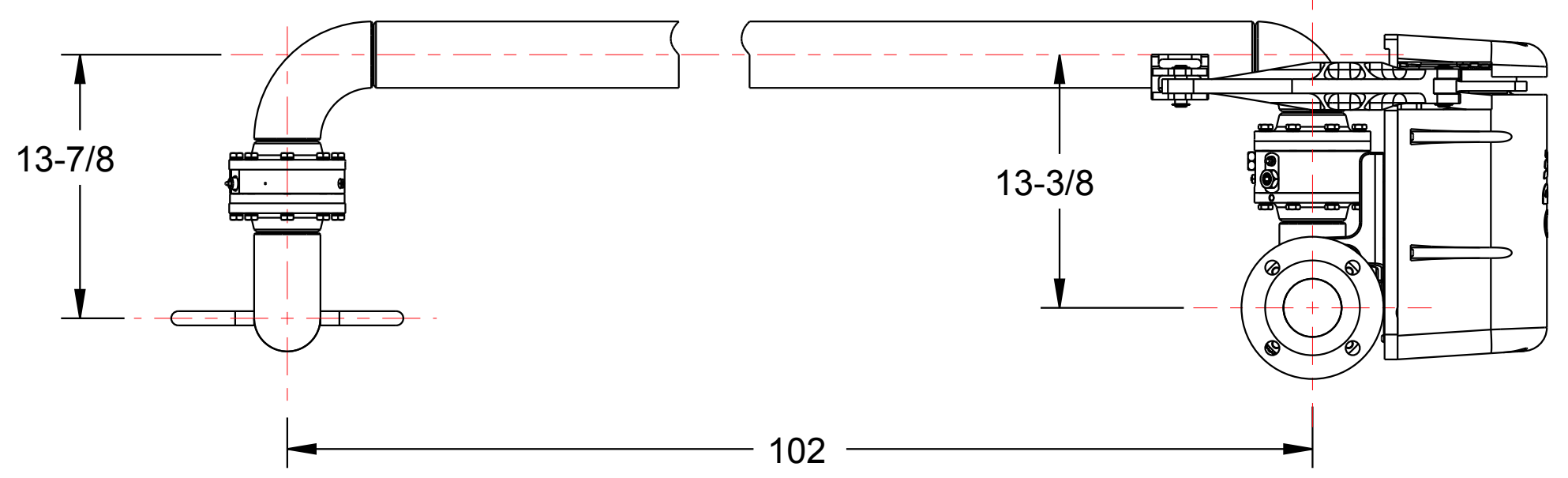


MATERIALS OF CONSTRUCTION	CARBON STEEL
SWIVEL JOINT SEALS	FLUOROCARBON GFLT
PRODUCT	ASPHALT
ESTIMATED WEIGHT	325 LBS
MOMENT LOAD AT SPRING	11,650 IN-LBS
TEST PRESSURE	90 PSI
PRODUCT RETENTION	NO
WEIGHT BY OTHERS	INSULATION AT 2.5 LBS/FT

THIS DRAWING IS NOT TO BE SCALED. FOR ADDITIONAL INFORMATION, PLEASE CONTACT OUR ENGINEERING DEPT.

REVISIONS					
LTR	ECN #	DESCRIPTION	DRAWN	APPROVED	DATE
-	-	-	-	-	-

ITEM	QTY	UM	PART NUMBER	DESCRIPTION
10	1	EA	HX99561	PIPE PKG, CST, EJ33F-J527, J528
9	1	EA	LADOC-STD	LOADING ARM, NAME TAG AND HARDWARE
8	3	EA	LSK-8000-0302	LOADER SEAL KIT, 8000, FLUOROCARBON, 3"
7	1	EA	C20785	ASM, BU STYLE, DFRH/UFLH,CST, DSF,3"
6	1	EA	790C-0050	RIGHT HAND EZ ADJUST 'C' SPRING BALANCE
5	2	EA	C20561	MODULE,SWIVEL,CST,DSF,3"
4	1	EA	C20551	WLDT, SF x F, 3" CST DSF
3	1	EA	N/A	3" CST PIPE SPOOL, OBR
2	1	EA	C21229	MODULE,SWIVEL,CST,DSF SINGLE,3"
1	1	EA	N/A	3" CST DSF PIPE SPOOL ASSY, DROP



CONFIDENTIAL THIS DOCUMENT CONTAINS INFORMATION WHICH IS PROPRIETARY TO OPW, AND SHOULD BE PROTECTED ACCORDINGLY.		DESCRIPTION: 3" FIXED REACH TOP LOADING ARM, DFRH	
SIGNATURES	MO-DA-YR	REV:	PART NUMBER:
DRAWN: BJB	3/1/11	-	EJ33F-J527
CHECKED: -	-	SIZE: D	SCALE: 0.125 SHEET 1 OF 3
MATERIAL:	WEIGHT: -		
		3D GENERATED DRAWING	