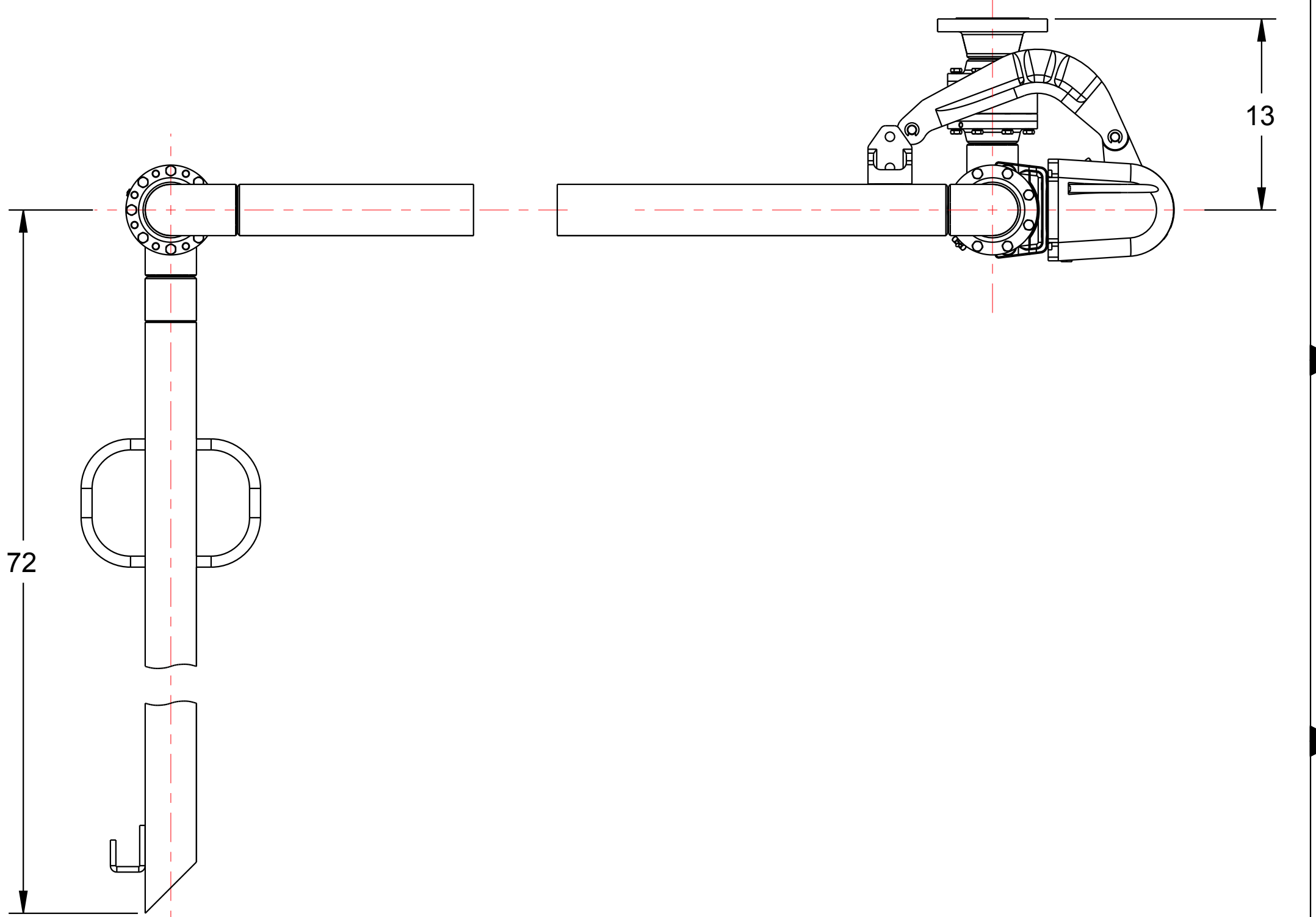
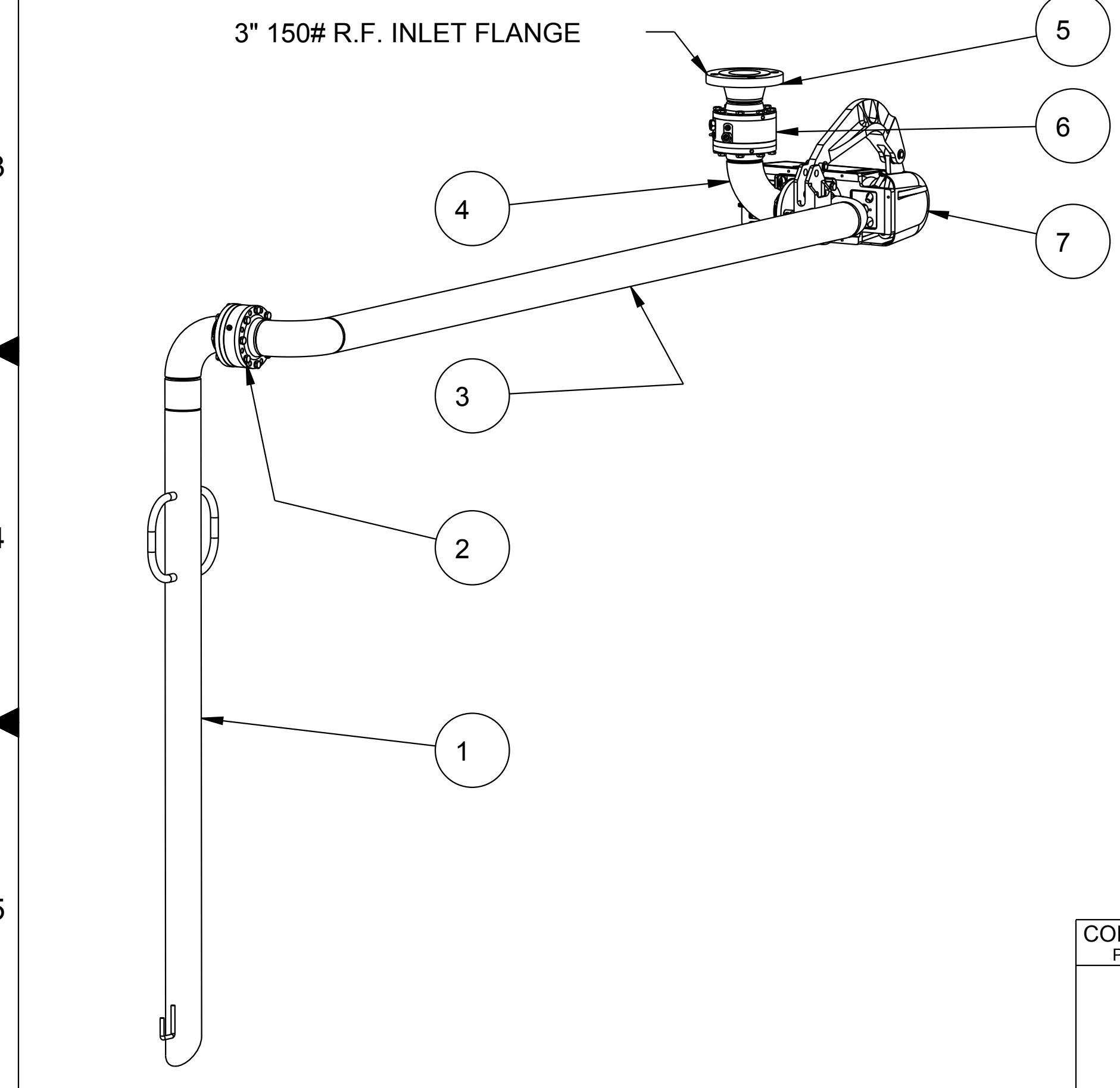
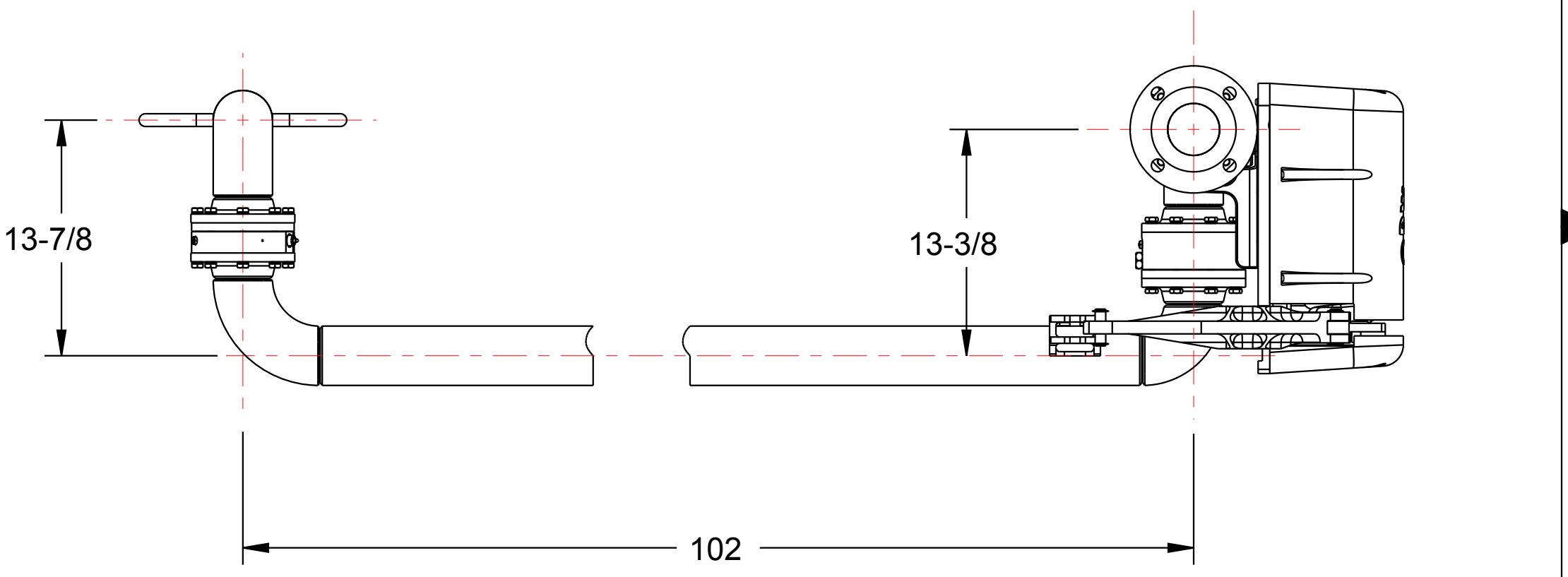


MATERIALS OF CONSTRUCTION	CARBON STEEL
SWIVEL JOINT SEALS	FLUOROCARBON GFLT
PRODUCT	ASPHALT
ESTIMATED WEIGHT	325 LBS
MOMENT LOAD AT SPRING	11,650 IN-LBS
TEST PRESSURE	90 PSI
PRODUCT RETENTION	NO
WEIGHT BY OTHERS	INSULATION AT 2.5 LBS/FT

THIS DRAWING IS NOT TO BE SCALED. FOR ADDITIONAL INFORMATION, PLEASE CONTACT OUR ENGINEERING DEPT.

REVISIONS					
LTR	ECN #	DESCRIPTION	DRAWN	APPROVED	DATE
-	-	-	-	-	-

ITEM	QTY	UM	PART NUMBER	DESCRIPTION
10	1	EA	HX99561	PIPE PKG, CST, EJ33F-J527, J528
9	1	EA	LADOC-STD	LOADING ARM, NAME TAG AND HARDWARE
8	3	EA	LSK-8000-0302	LOADER SEAL KIT, 8000, FLUOROCARBON, 3"
7	1	EA	790CLH-0045	LEFT HAND EZ ADJUST 'C' SPRING BALANCE
6	2	EA	C20561	MODULE, SWIVEL, CST, DSF, 3"
5	1	EA	C20551	WLDT, SF x F, 3" CST DSF
4	1	EA	C20787	ASM, BT STYLE, DFLH/UFRH, CST, DSF, 3"
3	1	EA	N/A	3" CST PIPE SPOOL, OBR
2	1	EA	C21229	MODULE, SWIVEL, CST, DSF SINGLE, 3"
1	1	EA	N/A	3" CST DSF PIPE SPOOL ASSY, DROP



CONFIDENTIAL THIS DOCUMENT CONTAINS INFORMATION WHICH IS PROPRIETARY TO OPW, AND SHOULD BE PROTECTED ACCORDINGLY.			DESCRIPTION: 3" FIXED REACH TOP LOADING ARM, DFLH		
SIGNATURES		MO-DA-YR	REV:	PART NUMBER:	
DRAWN: BJB		3/1/11	-	EJ33F-J528	
CHECKED:		-	SIZE:	SCALE: 0.125 SHEET 1 OF 3	
MATERIAL:		WEIGHT:	D	3D GENERATED DRAWING	

