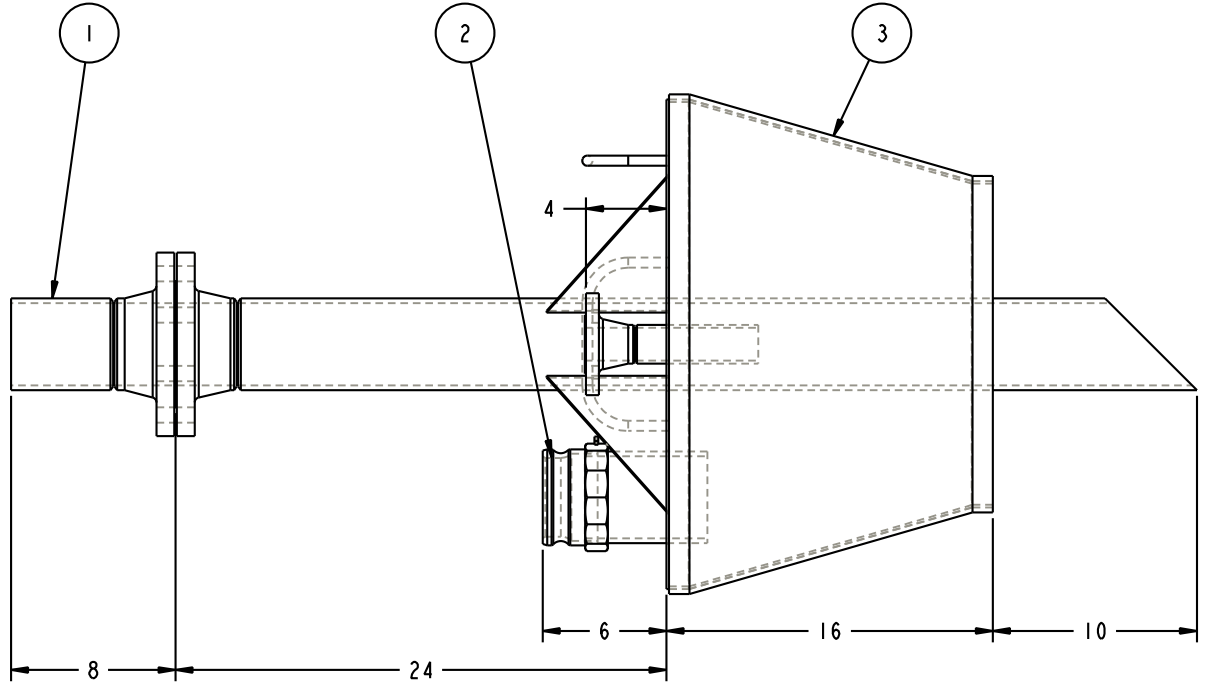
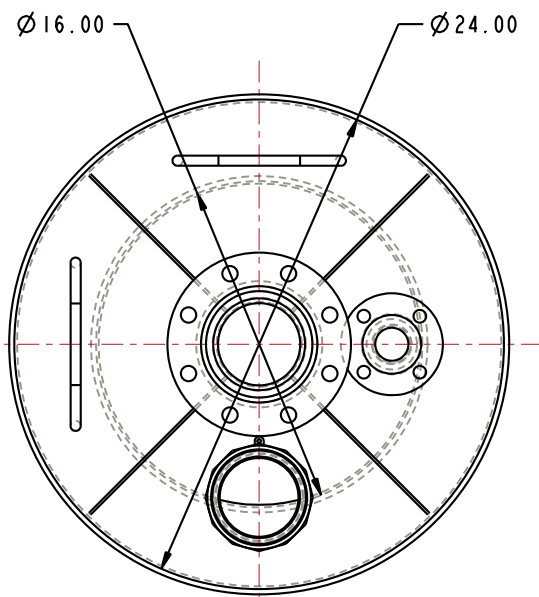
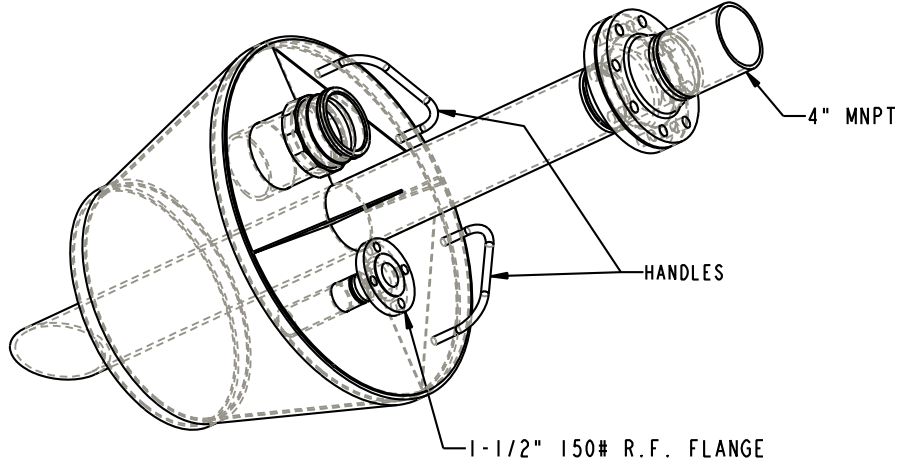


MATERIALS OF CONSTRUCTION	316L STAINLESS STEEL
FACE SEAL GASKET	FLUOROCARBON
FLANGE GASKETS	KLINGER SIL C5400
WEIGHT	170 LBS

THIS DRAWING IS NOT TO BE SCALED. FOR ADDITIONAL INFORMATION, PLEASE CONTACT OUR ENGINEERING DEPT.

REVISIONS					
LTR	ECN #	DESCRIPTION	DRAWN	APPROVED	DATE
-	-	-	-	-	-

1	5	I	EA	LADOC-STD	LOADING ARM, NAME TAG AND HARDWARE
	4	I	EA	FHK-150-04-SS	FLANGE HARDWARE KIT, 150LB, SS, 4"
	3	I	EA	HX98896	TAPERED HATCH PLUG, SST, FLUOROCARBON
	2	I	EA	633A-SS40	4" SST AUTOLOK ADAPTOR
	1	I	EA	N/A	4" SST PIPE SPOOL
ITEM	QTY	UM	PART NUMBER	DESCRIPTION	



<b>CONFIDENTIAL</b> THIS DOCUMENT CONTAINS INFORMATION WHICH IS PROPRIETARY TO OPW, AND SHOULD BE PROTECTED ACCORDINGLY.				DESCRIPTION: TAPERED HATCH PLUG	
SIGNATURES		MO-DA-YR	REV:	PART NUMBER:	
DRAWN: BJB		8/26/10	-	7292THP-J181	
CHECKED:		-	SIZE:	D	
MATERIAL:		WEIGHT:	SCALE: 0.225 SHEET 1 OF 2		
				<b>Engineered Systems</b> <small>A BOSTED Resources Company</small> Lebanon, Ohio 45036 USA <b>3D GENERATED DRAWING</b>	

A

B

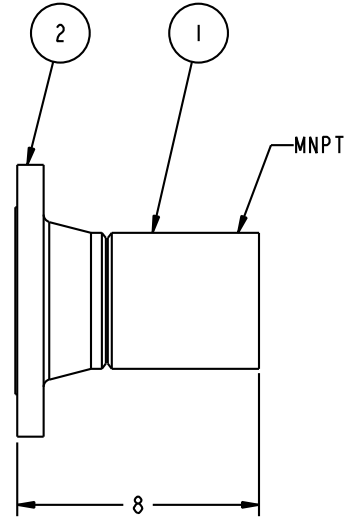
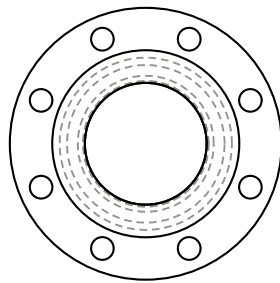
C

D

E

THIS DRAWING IS NOT TO BE SCALED. FOR ADDITIONAL INFORMATION, PLEASE CONTACT OUR ENGINEERING DEPT.

2	1	EA	H-07745-M		FLG, 150, RFWN, S40, SST, 4"
1	1	FT	HX98895	5.000	4" SCH 40 SST PIPE
ITEM	QTY	UM	PART NUMBER		DESCRIPTION



NOTES:

1. WELDING PER OPW WELD SPECIFICATIONS. REFERENCE APPLICABLE WELD SPECIFICATIONS PER COMPONENT.
2. COMPONENT FACE(S) PERPENDICULAR TO CENTER LINE(S)  $\pm .5^\circ$
3. ALL FLANGE BOLT HOLES TO STRADDLE CENTER LINE(S)
4. PROTECT FLANGE FACE(S) AND MACHINED SURFACES WHEN WELDING
5. ALIGN COMPONENTS AS SHOWN  $\pm 2^\circ$ .
6. CLEAN ALL WELDS USING A STAINLESS STEEL ONLY WIRE BRUSH.

<b>CONFIDENTIAL</b> THIS DOCUMENT CONTAINS INFORMATION WHICH IS PROPRIETARY TO OPW, AND SHOULD BE PROTECTED ACCORDINGLY.			DESCRIPTION: TAPERED HATCH PLUG		
SIGNATURES		MO-DA-YR	REV:	PART NUMBER:	
DRAWN: BJB		8/26/10	-	7292THP-J181	
CHECKED:		-	SIZE:	D	
MATERIAL:		WEIGHT:	-	SCALE: 0.225 SHEET 2 OF 2	
			<b>Engineered Systems</b> <small>A BOSTON Resources Company</small> Lebanon, Ohio 45036 USA 3D GENERATED DRAWING		

A

B

C

D

E