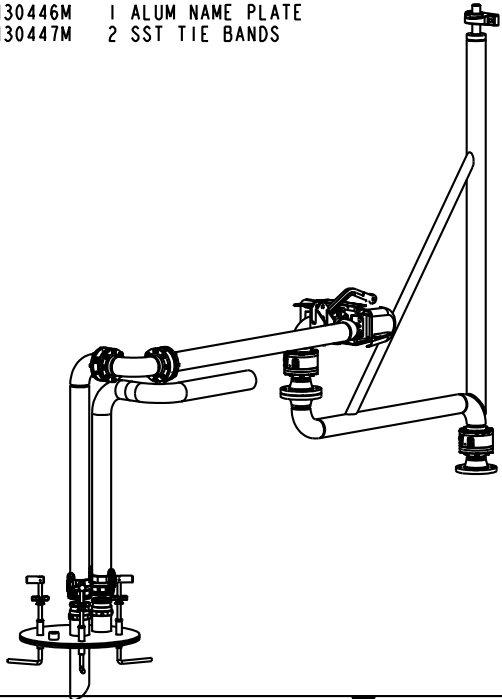


MATERIALS OF CONSTRUCTION	316L STAINLESS STEEL
SWIVEL JOINT SEALS	TFE ENCAPSULATED SILICONE
PRODUCT	SODIUM BISULFATE
ESTIMATED WEIGHT	575 LBS
MOMENT LOAD AT SPRING	12,850 IN-LBS
MOMENT LOAD AT INLET	35,000 IN-LBS
FLANGE GASKETS	KLINGER SIL C5400
TEST PRESSURE	90 PSI
PRODUCT RETENTION	NO
WEIGHT BY OTHERS	NO

9	1	EA	788L-0040	LOCKDOWN UNIT
8	1	EA	H-01180-M	PILLOW BLOCK BEARING
7	1	EA	7192LCP-G418	LOCKING COVER PLATE, SST, VITON GSK'T
6	1	EA	790CLH-0045	EZ ADJUST TORSION SPRING BALANCE
5	1	EA	8958FSW-G417	3" SWIVEL, ENDURA DSF, SST
4	1	EA	8930FW-G416	3" SWIVEL, ENDURA DSF, SST
3	1	EA	HX93246	3" SST FLEXHOSE, 24' OAL, MNPT EA END
2	2	EA	733DL-30SB	3" SST AUTOLOK COUPLER
1	2	EA	633A-SS30	3" SST AUTOLOK ADAPTOR, FNPT
ITEM	QTY	UM	PART NUMBER	DESCRIPTION

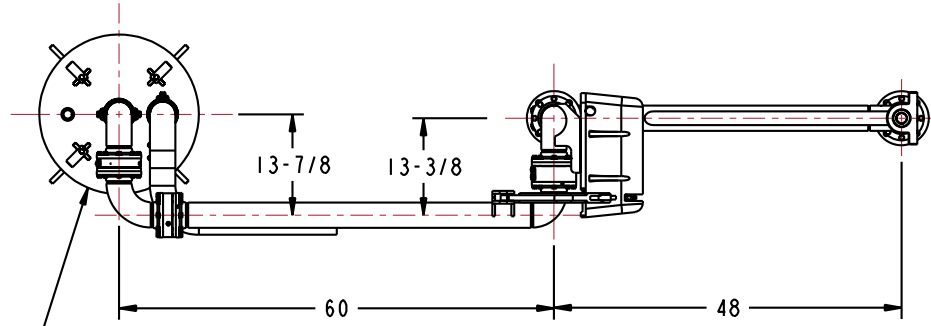
- H30315M 4 BOLT
- H06092M 4 NUT
- H08979M 4 WASHER
- H04819M 1 GASKET
- H02209PA 1 INSTRUCTION SHEET
- H30446M 1 ALUM NAME PLATE
- H30447M 2 SST TIE BANDS

STYLE 50W SINGLE RACE
ENDURA DSF SST SWIVEL
(2) PLANES OD ROTATION

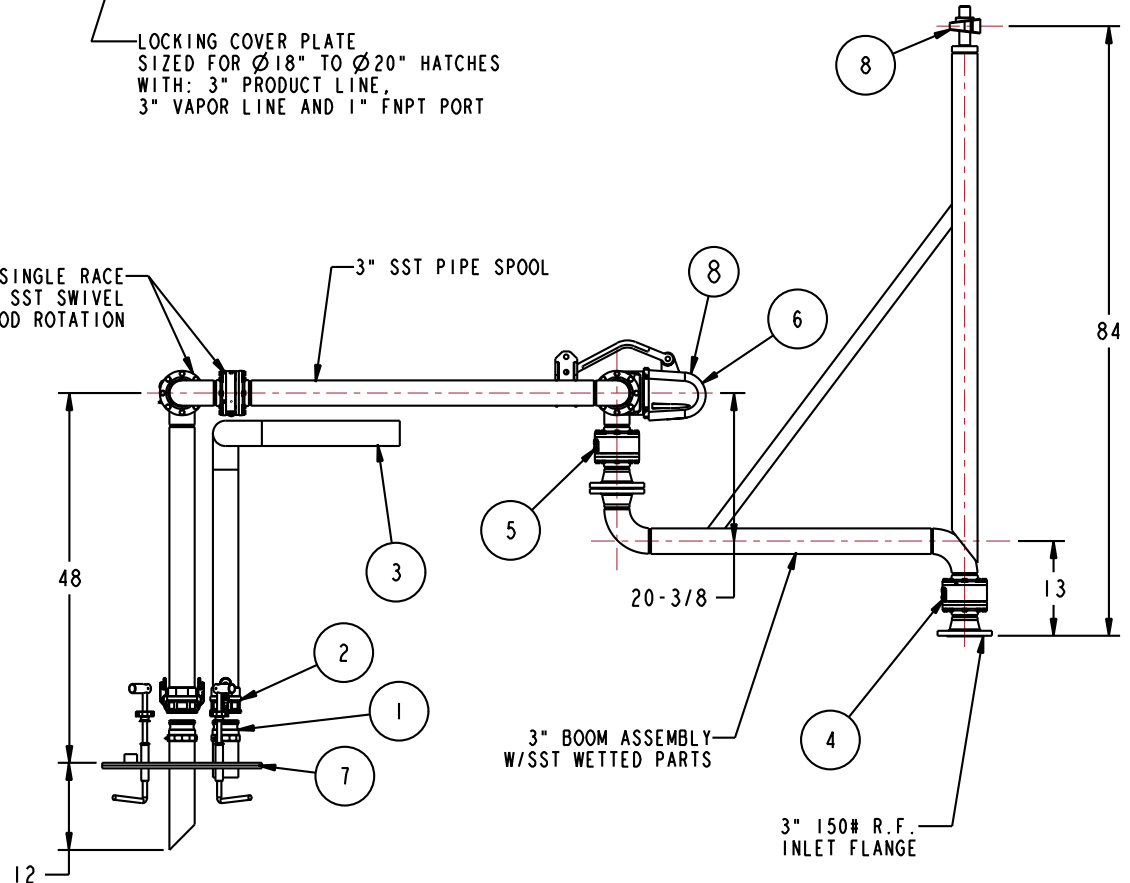


THIS DRAWING IS NOT TO BE SCALED. FOR ADDITIONAL INFORMATION, PLEASE CONTACT OUR ENGINEERING DEPT.

REVISIONS					
LTR	ECN #	DESCRIPTION	DRAWN	APPROVED	DATE
-	-	-	-	-	-



LOCKING COVER PLATE
SIZED FOR Ø18" TO Ø20" HATCHES
WITH: 3" PRODUCT LINE,
3" VAPOR LINE AND 1" FNPT PORT



CONFIDENTIAL THIS DOCUMENT CONTAINS INFORMATION WHICH IS PROPRIETARY TO OPW, AND SHOULD BE PROTECTED ACCORDINGLY.

DESCRIPTION: 3" LOADING ARM, LH, SK18484A

UNLESS OTHERWISE SPECIFIED
TOLERANCES ON DIMENSIONS
3 DECIMALS +/- 0.005
2 DECIMALS +/- 0.015
1 DECIMAL +/- 0.030
ANGLES +/- 1/2 DEG
MACHINED SURFACES 125 RMS MAX

SIGNATURES		MO-DA-YR
DRAWN: BJB		5/5/08
CHECKED:		
MATERIAL:	WEIGHT:	

REV: -
SIZE: D

PART NUMBER:
EB32F-G415
SCALE: 0.080 SHEET 1 OF 4

OPW **Engineered Systems**
A **ROBERT** Resources Company
Lebanon, Ohio 45036 USA
3D GENERATED DRAWING