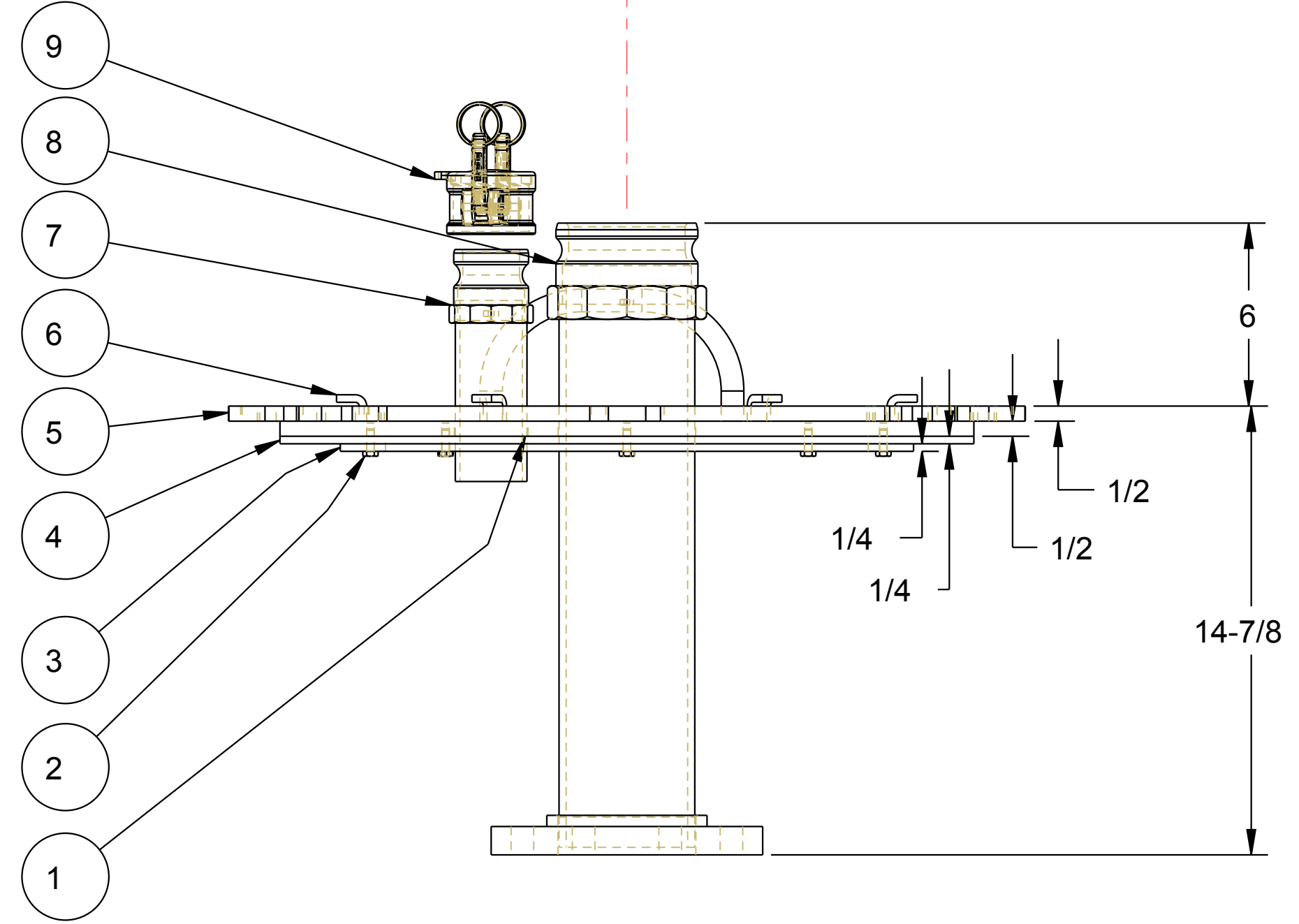
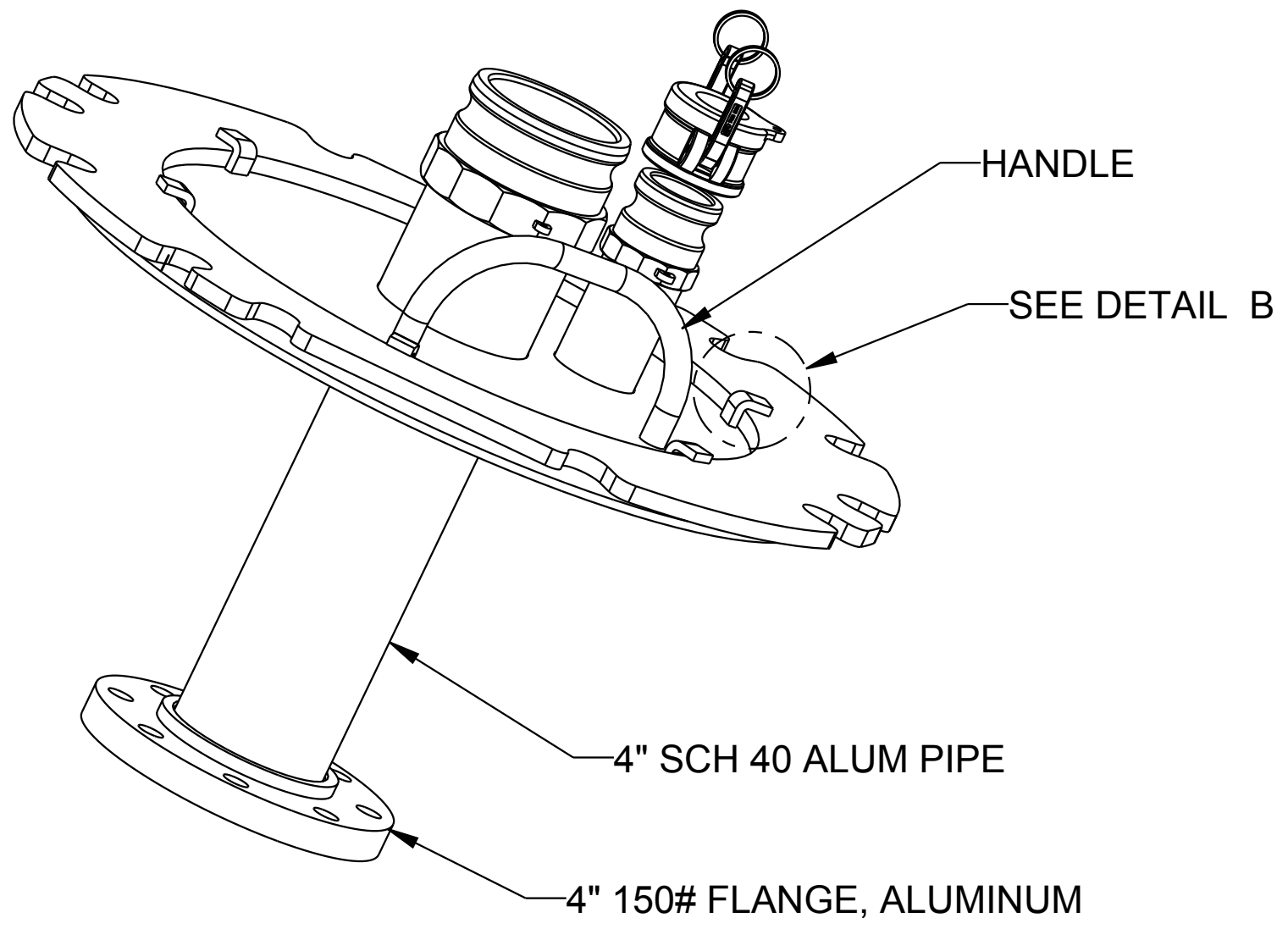
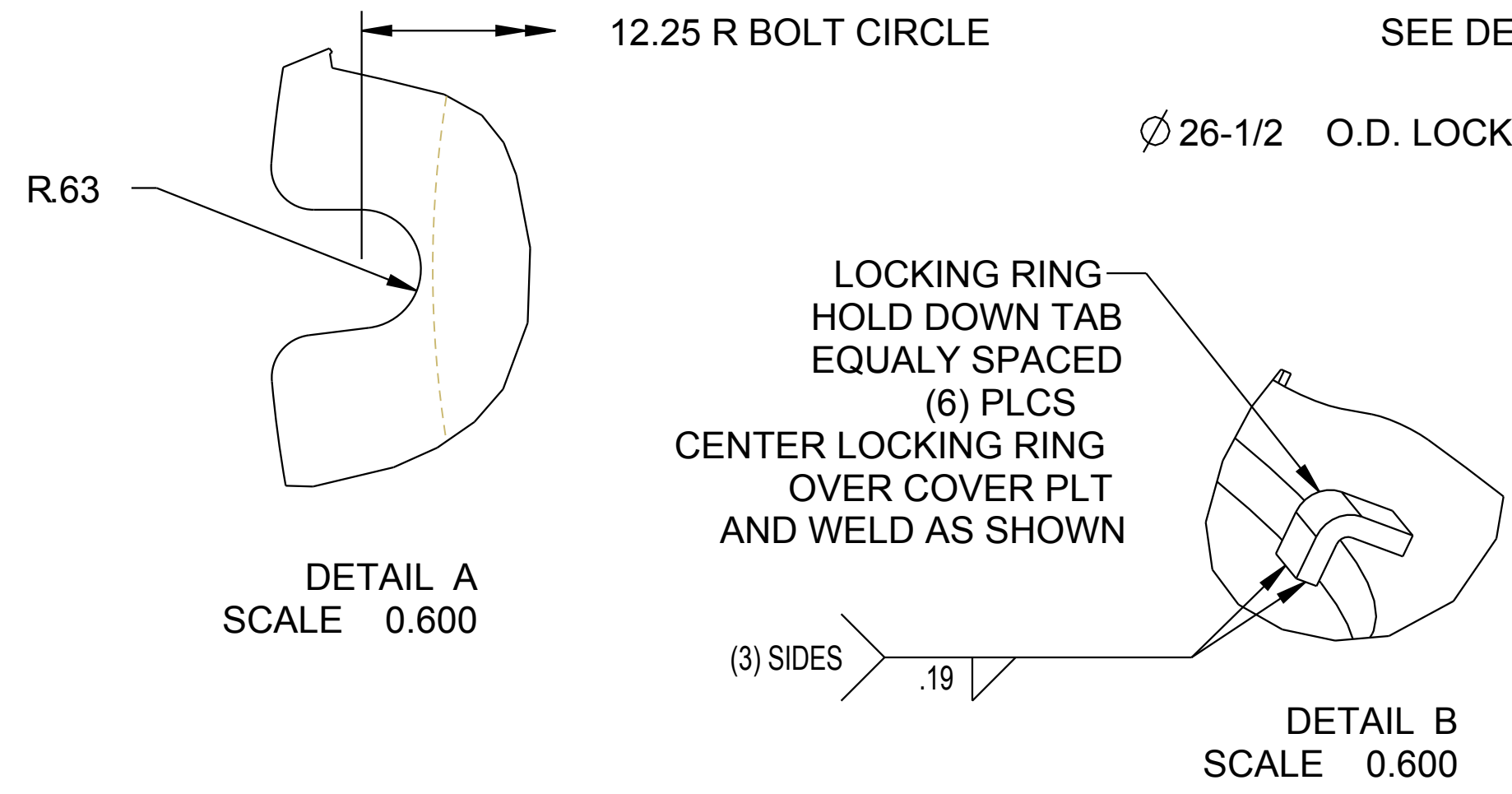
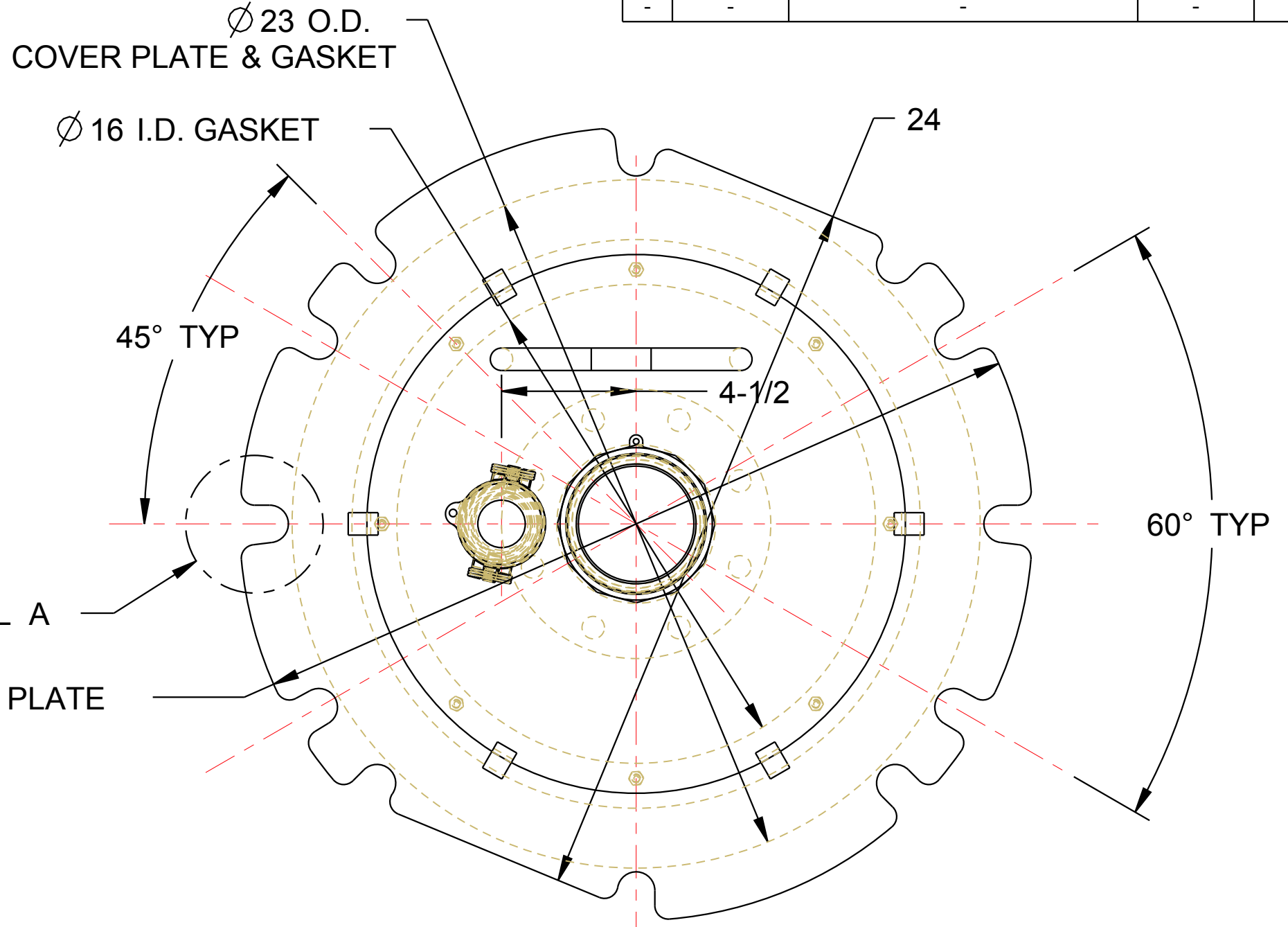


MATERIALS OF CONSTRUCTION				ALUMINUM
GASKET MATERIAL				FLUOROCARBON
ITEM	QTY	UM	PART NUMBER	DESCRIPTION
11	1	EA	LADOC-STD	LOADING ARM, NAME TAG AND HARDWARE
10	1	EA	H00973M	CAM AND GROOVE GASKET, FLUOROCARBON, 2"
9	1	EA	634B-AL20	2" KAMLOK DUST CAP, ALUM
8	1	EA	633A-AL40	ADAPTOR, KAMLOK, ALUM, 4"
7	1	EA	633A-AL20	2" KAMLOK ADAPTOR, ALUM
6	6	EA	HX99549	LOCKING RING TAB, ALUM
5	1	EA	HX99548	LOCKING RING, ALUM
4	1	EA	HX98915	GASKET, FLUOROCARBON
3	1	EA	HX98578	GASKET LOCKING RING, ASTM B 209 6061-T6 ALUM
2	8	EA	HX98580ND	CAP SCREW, 1/4-20 X 3/4, 316 SST
1	1	EA	N/A	COVER PLATE ASSY, ALUM

THIS DRAWING IS NOT TO BE SCALED. FOR ADDITIONAL INFORMATION, PLEASE CONTACT OUR ENGINEERING DEPT.

REVISIONS					
LTR	ECN #	DESCRIPTION	DRAWN	APPROVED	DATE
-	-	-	-	-	-



<p>CONFIDENTIAL</p> <p>THIS DOCUMENT CONTAINS INFORMATION WHICH IS PROPRIETARY TO OPW, AND SHOULD BE PROTECTED ACCORDINGLY.</p>		<p>DESCRIPTION: LOCKING COVER PLATE ASSEMBLY</p>	
<p>SIGNATURES: BJB</p> <p>MO-DA-YR: 2/25/11</p>		<p>REV: -</p> <p>PART NUMBER: HX99547</p>	
<p>CHECKED: -</p> <p>MATERIAL: -</p> <p>WEIGHT: -</p>		<p>SIZE: D</p> <p>SCALE: 0.225</p> <p>SHEET 1 OF 2</p>	
		<p>opw Engineered Systems</p> <p>FULLY ENGINEERED PART OF OPW FLUID TRANSFER GROUP</p> <p>3D GENERATED DRAWING</p>	

A

B

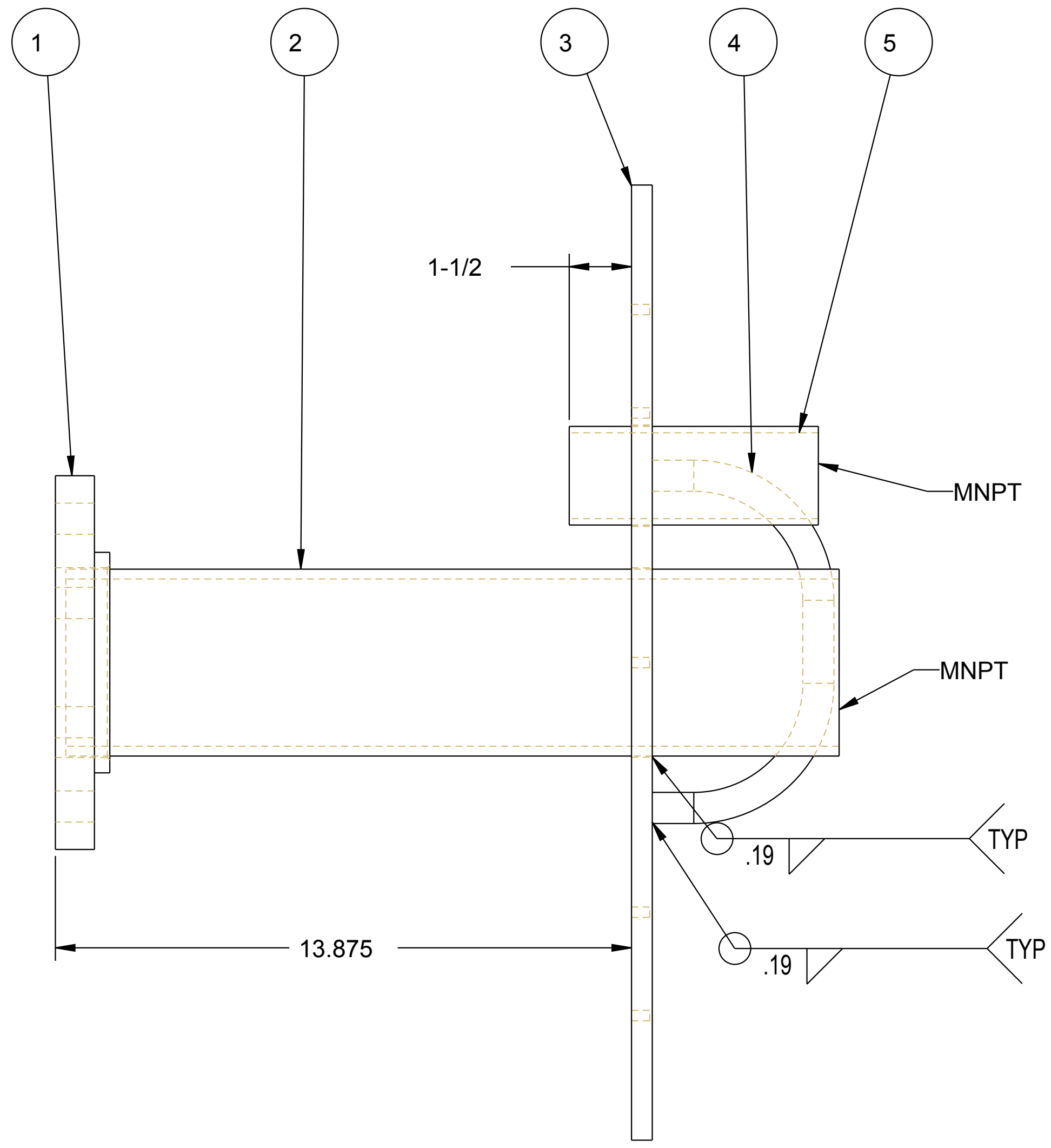
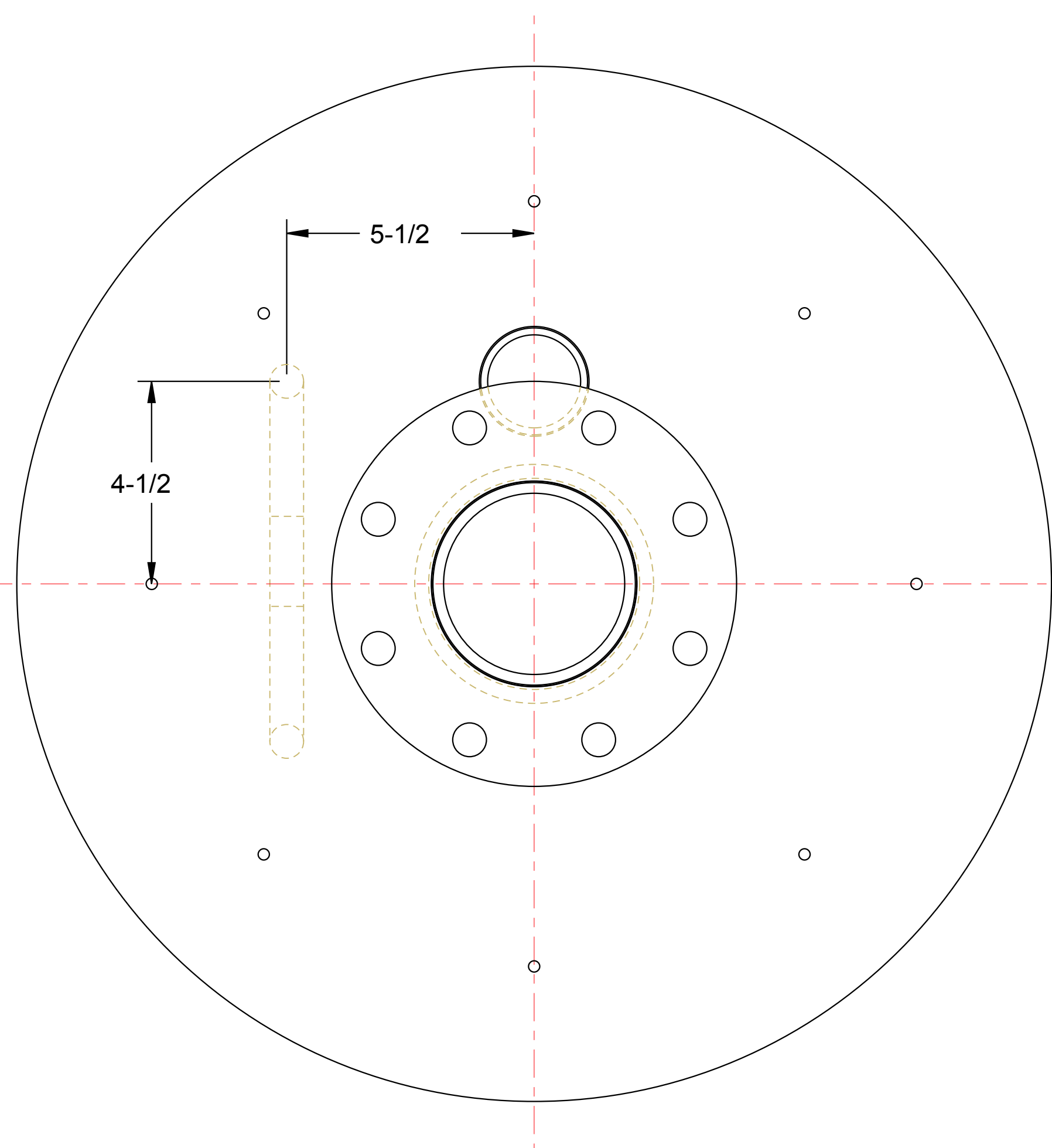
C

D

E

THIS DRAWING IS NOT TO BE SCALED. FOR ADDITIONAL INFORMATION, PLEASE CONTACT OUR ENGINEERING DEPT.

5	1	EA	HX99550	6.000	2" SCH 40 ALUM PIPE
4	1	EA	HX98327		"D" HANDLE, ALUM
3	1	EA	HX99551		COVER PLATE, ASTM B209 6061-T6 ALUM
2	1	EA	HX99550	18.625	4" SCH 40 ALUM PIPE
1	1	EA	H-10235-A		FLANGE, FFSO, 150#, AL, 4"
ITEM	QTY	UM	PART NUMBER		DESCRIPTION



- NOTES:
1. WELDING PER OPW WELD SPECIFICATIONS. REFERENCE APPLICABLE WELD SPECIFICATIONS PER COMPONENT.
 2. COMPONENT FACE(S) PERPENDICULAR TO CENTER LINE(S) $\pm 5^\circ$
 3. ALL FLANGE BOLT HOLES TO STRADDLE CENTER LINE(S)
 4. PROTECT FLANGE FACE(S) AND MACHINED SURFACES WHEN WELDING
 5. ALIGN COMPONENTS AS SHOWN $\pm 2^\circ$

CONFIDENTIAL - THIS DOCUMENT CONTAINS INFORMATION WHICH IS PROPRIETARY TO OPW, AND SHOULD BE PROTECTED ACCORDINGLY.			DESCRIPTION: LOCKING COVER PLATE ASSEMBLY		
SIGNATURES		MO-DA-YR	REV:	PART NUMBER:	
DRAWN: BJB		2/25/11	-	HX99547	
CHECKED:		-	SIZE:	D	
MATERIAL:		WEIGHT:	SCALE: 0.225		SHEET 2 OF 2
			 <small>PART OF OPW FLUID TRANSFER GROUP</small> <small>A DOVER COMPANY</small>		
			3D GENERATED DRAWING		

A

B

C

D

E