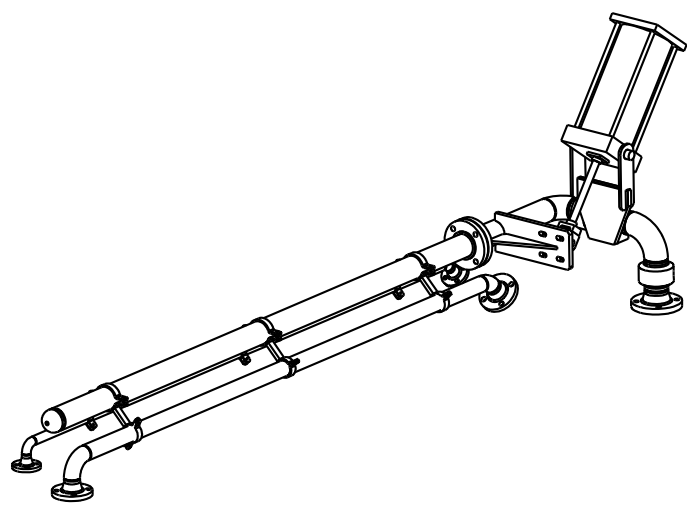
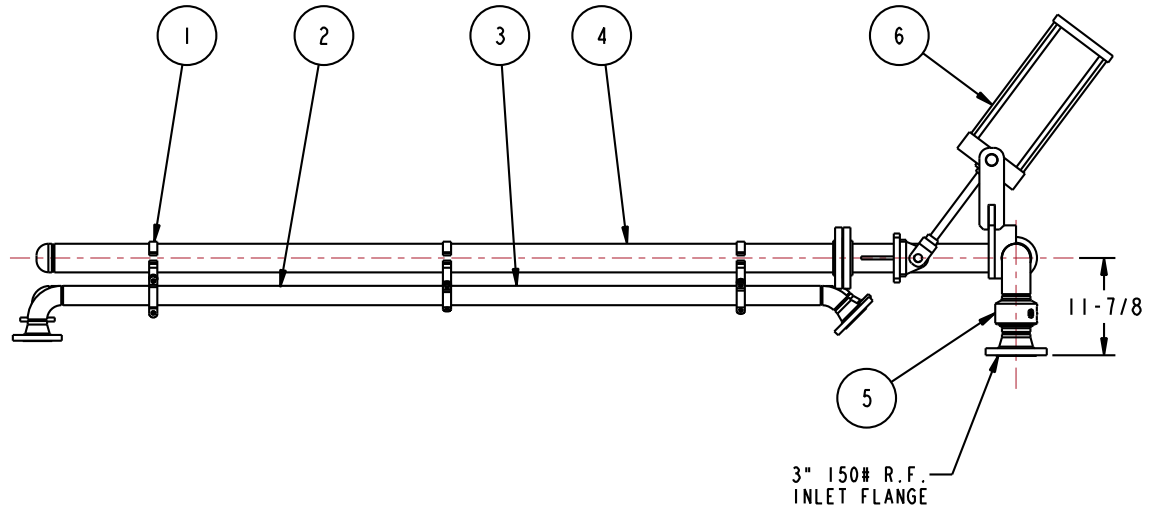
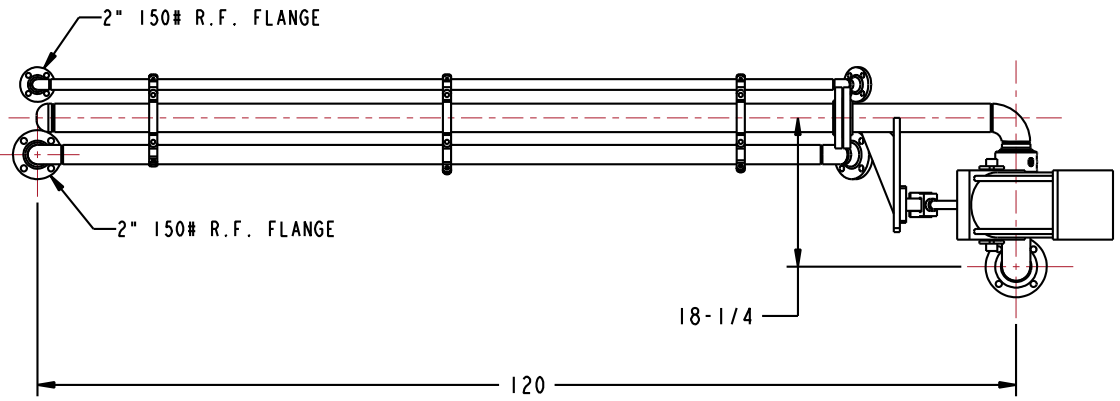


MATERIALS OF CONSTRUCTION		CARBON STEEL BY-PASS ARM 316L STAINLESS STEEL PRODUCT BEARING PARTS	
SWIVEL JOINT SEALS		FLUOROCARBON GFLT	
PRODUCT		DMDS	
ESTIMATED WEIGHT		325 LBS	
MOMENT LOAD AT CYLINDER		16,025 IN-LBS	
TEST PRESSURE		N/A	
PRODUCT RETENTION		NO	
WEIGHT BY OTHERS		NOT TO EXCEED 65 LBS	
VERTICAL CYLINDER TRAVEL		-35° TO +35°	

10	1	EA	LADOC-STD	LOADING ARM, NAME TAG AND HARDWARE
9	2	EA	LSK-3400-0302	LOADER SWIVEL KIT, 3400, FLUOROCARBON, 3"
8	1	EA	HK-PNEU-CS	HARDWARE KIT, PNEU CYL, CS
7	1	EA	FHK-150-03-CS	FLANGE HARDWARE KIT, 150LB, CS, 3"
6	1	EA	HX98940	PNEUMATIC CYLINDER PACKAGE
5	1	EA	3450FW	3" SWIVEL ASSY, CST
4	1	EA	N/A	3" CST PIPE SPOOL
3	1	EA	N/A	2" SST PIPE SPOOL
2	1	EA	N/A	1" SST PIPE SPOOL
1	3	EA	HX92257	3" X 2" X 1" CLAMP ASSY
ITEM	QTY	UN	PART NUMBER	DESCRIPTION

THIS DRAWING IS NOT TO BE SCALED. FOR ADDITIONAL INFORMATION, PLEASE CONTACT OUR ENGINEERING DEPT.

REVISIONS					
LTR	ECN #	DESCRIPTION	DRAWN	APPROVED	DATE
-	-	-	-	-	-



PNEUMATIC CYLINDER PACKAGE SUPPLIED COMPLETE WITH ASSEMBLED CONTROL BOX AND (2) STATION PENDANT CONTROL WITH 10 FT COILED HOSE CONNECTION

<b>CONFIDENTIAL</b> THIS DOCUMENT CONTAINS INFORMATION WHICH IS PROPRIETARY TO OPW, AND SHOULD BE PROTECTED ACCORDINGLY.		DESCRIPTION: 3" BY-PASS ARM, UFRH, PNEUMATIC	
UNLESS OTHERWISE SPECIFIED TOLERANCES ON DIMENSIONS 3 DECIMALS +/- 0.005 2 DECIMALS +/- 0.015 1 DECIMAL +/- 0.030 ANGLES +/- 1/2 DEG MACHINED SURFACES 125 RMS MAX		SIGNATURES	MO-DA-YR
DRAWN: BJB		9/8/10	
CHECKED: -		REV: -	
MATERIAL: -		SIZE: D	
WEIGHT: -		PART NUMBER: J32F-J201	
SCALE: 0.090		SHEET 1 OF 6	
		3D GENERATED DRAWING	

**OPW Engineered Systems**  
A **ROTEX** Resources Company  
Lebanon, Ohio 45036 USA