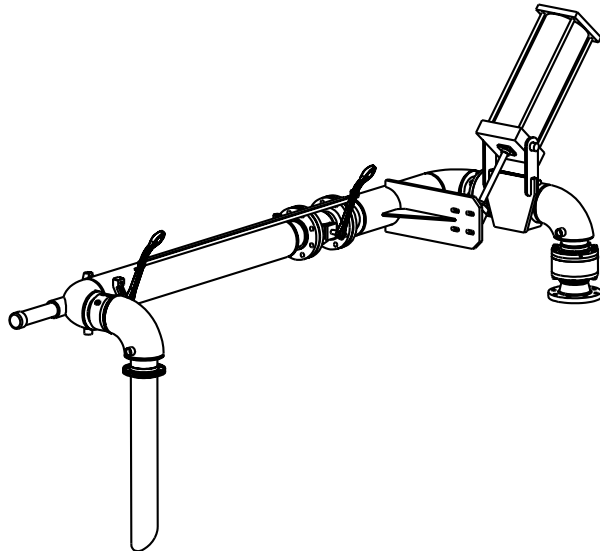


MATERIALS OF CONSTRUCTION	CARBON STEEL
SWIVEL JOINT SEALS	FLUOROCARBON GFLT
PRODUCT	ASPHALT
ESTIMATED WEIGHT	700 LBS
MOMENT LOAD AT CYLINDER	25,200 IN-LBS
MOMENT LOAD AT INLET	N/A
FLANGE GASKETS	KLINGER-SIL 5400
TEST PRESSURE	90 PSI
PRODUCT RETENTION	NO
WEIGHT BY OTHERS	NONE
STEAM SUPPLY & RETURN HOSES	BY OTHERS
VERTICAL TRAVEL OF CYLINDER	-35° TO +35°

N/A	8	EA	H30911M	3/4" STREET ELBOW, CST
N/A	3	EA	H30913M	STEAM JUMPER HOSE, 36" OAL
N/A	1	EA	HX97947	INSULATION PACKAGE
7	1	EA	HX97946	PNEUMATIC CYLINDER PACKAGE
6	1	EA	HX97945	HANDLE, 2" CST PIPE
5	1	EA	H-03958-M	CAP, PIPE, CST, 2"
4	1	EA	3440FW	4" SWIVEL, JKT'D, CST
3	1	EA	8450FW	4" SWIVEL, ENDURA DSF, JKT'D, CST
2	1	EA	N/A	4" CST DROP PIPE SPOOL
1	1	EA	HX97948	4" CST BALL VALVE W/REMOTE CONTROL
ITEM	QTY	UM	PART NUMBER	DESCRIPTION

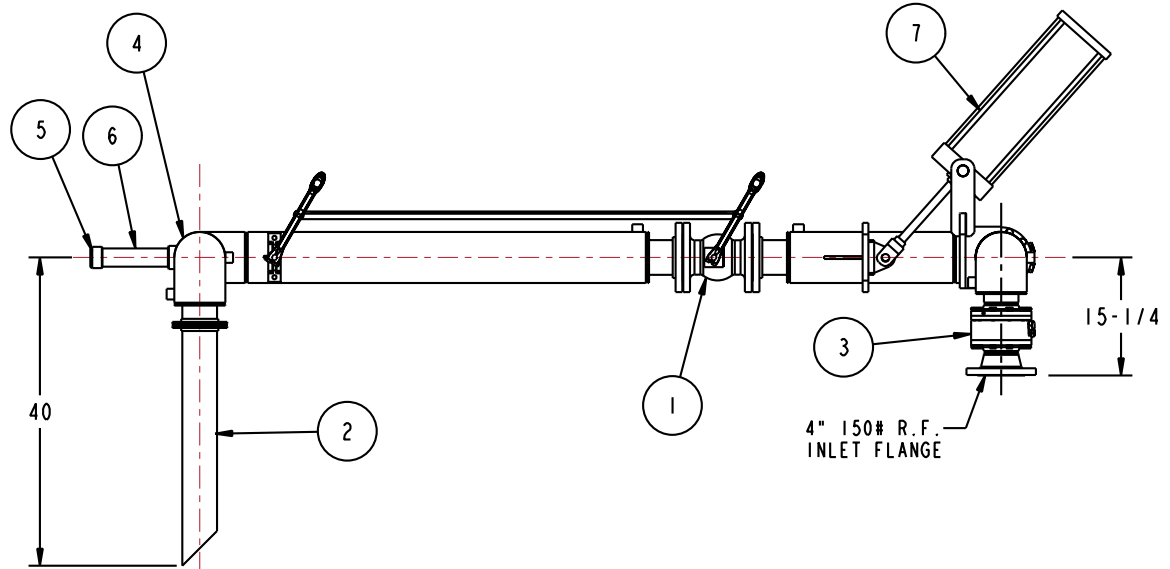
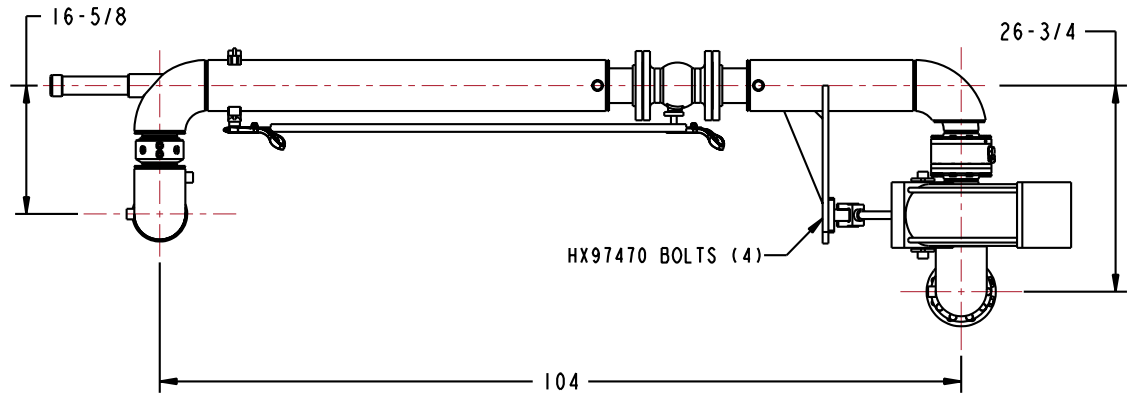
PNEUMATIC CYLINDER PACKAGE SUPPLIED COMPLETE WITH ASSEMBLED CONTROL BOX AND (2) STATION PENDANT CONTROL

NOTE:  
HX97947 INSULATION PACKAGE AND HX97948 BALL VALVE ARE LISTED ON P.O. AS SEPARATE LINE ITEMS AND WILL BE SHIPPED SEPARATELY



THIS DRAWING IS NOT TO BE SCALED. FOR ADDITIONAL INFORMATION, PLEASE CONTACT OUR ENGINEERING DEPT.

REVISIONS					
LTR	ECN #	DESCRIPTION	DRAWN	APPROVED	DATE
-	-	-	-	-	-



<b>CONFIDENTIAL</b> THIS DOCUMENT CONTAINS INFORMATION WHICH IS PROPRIETARY TO OPW, AND SHOULD BE PROTECTED ACCORDINGLY.		DESCRIPTION: 4" TOP LOADING ARM, UFRH, JKT'D, PNEUMATIC	
UNLESS OTHERWISE SPECIFIED TOLERANCES ON DIMENSIONS 3 DECIMALS +/- 0.005 2 DECIMALS +/- 0.015 1 DECIMAL +/- 0.030 ANGLES +/- 1/2 DEG MACHINED SURFACES 125 RMS MAX	SIGNATURES	MO-DA-YR	REV:
DRAWN: BJB	10/28/09	-	-
CHECKED:	-	-	-
MATERIAL:	WEIGHT:	SIZE: D	PART NUMBER: <b>J32F-H649</b>
SCALE: 0.085		SHEET 1 OF 7	
3D GENERATED DRAWING		<b>Engineered Systems</b> <small>A BOSTED Resources Company</small> Lebanon, Ohio 45036 USA	