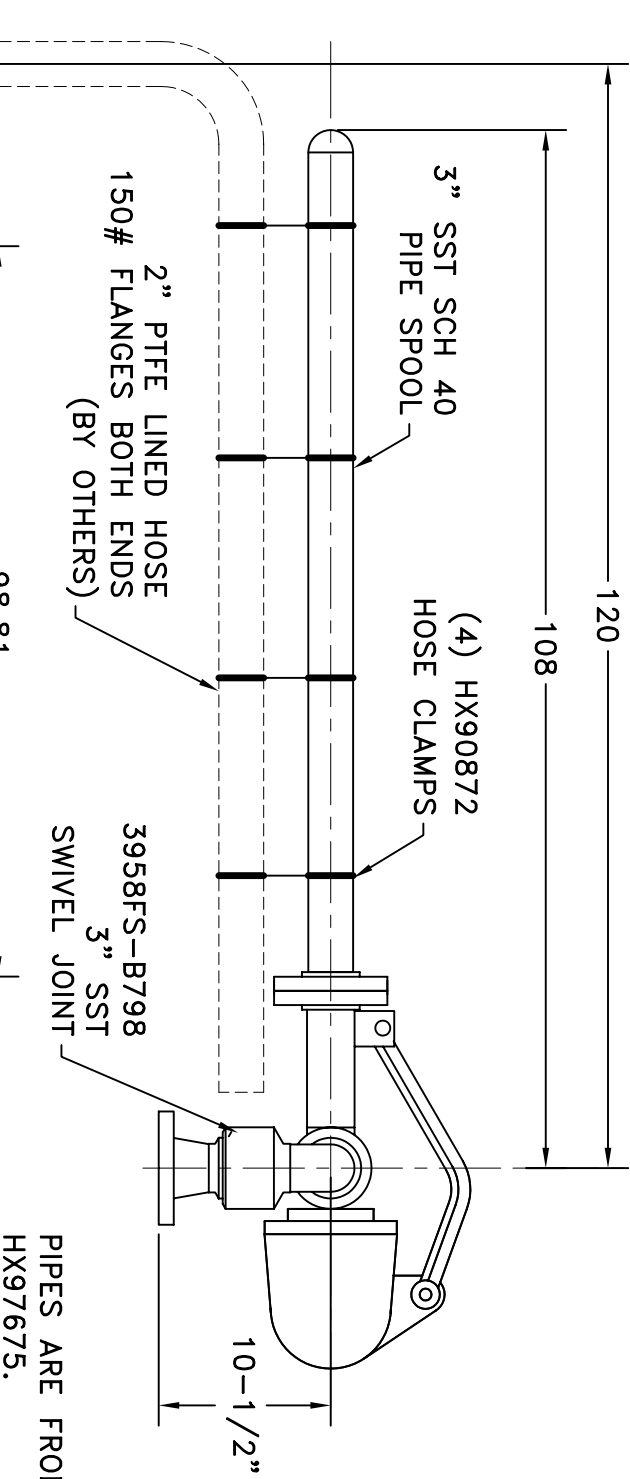
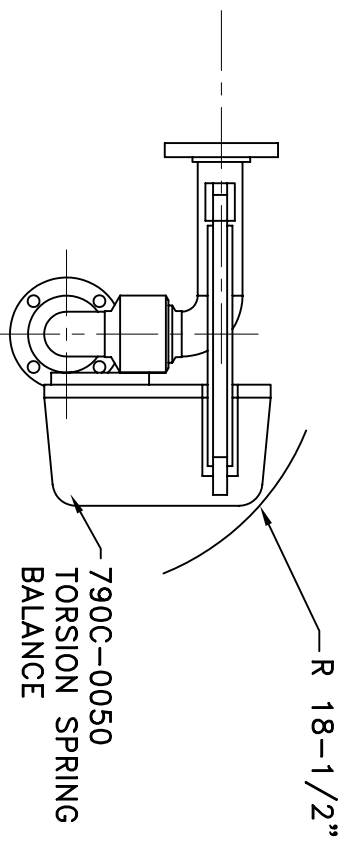


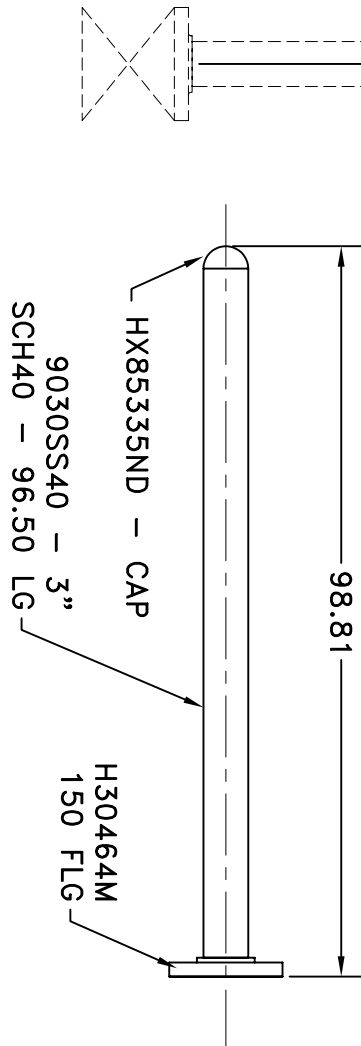
MATERIALS OF CONSTRUCTION: STAINLESS STEEL
 SWIVEL JOINT SEALS: BUNA
 PRODUCT: PHYPPOROUS OXY CHLORIDE

ESTIMATED WEIGHT OF LOADING ARM: 290 LBS.
 ESTIMATED MOMENT LOAD @ SPRING: 11,200 IN-LBS.
 ESTIMATED MOMENT LOAD @ INLET: N/A
 FLANGE GASKETS: KLINGER SIL C5400

- NOTES:
 1. LOADING ARM NOT DESIGNED FOR PRODUCT RETENTION
 2. LOADING ARM DESIGNED FOR WEIGHT BY OTHERS
 (NOT TO EXCEED 75LBS)



PIPES ARE FROM PACKAGE
 HX97675.



3" OPW J32F-H455 (BYPASS)



www.opw-es.com

DRAWN BY: SCK SCALE: NONE
 CHECKED BY: DATE: 07/09/09
 QUOTE NO. 19514 DRAWING NO.