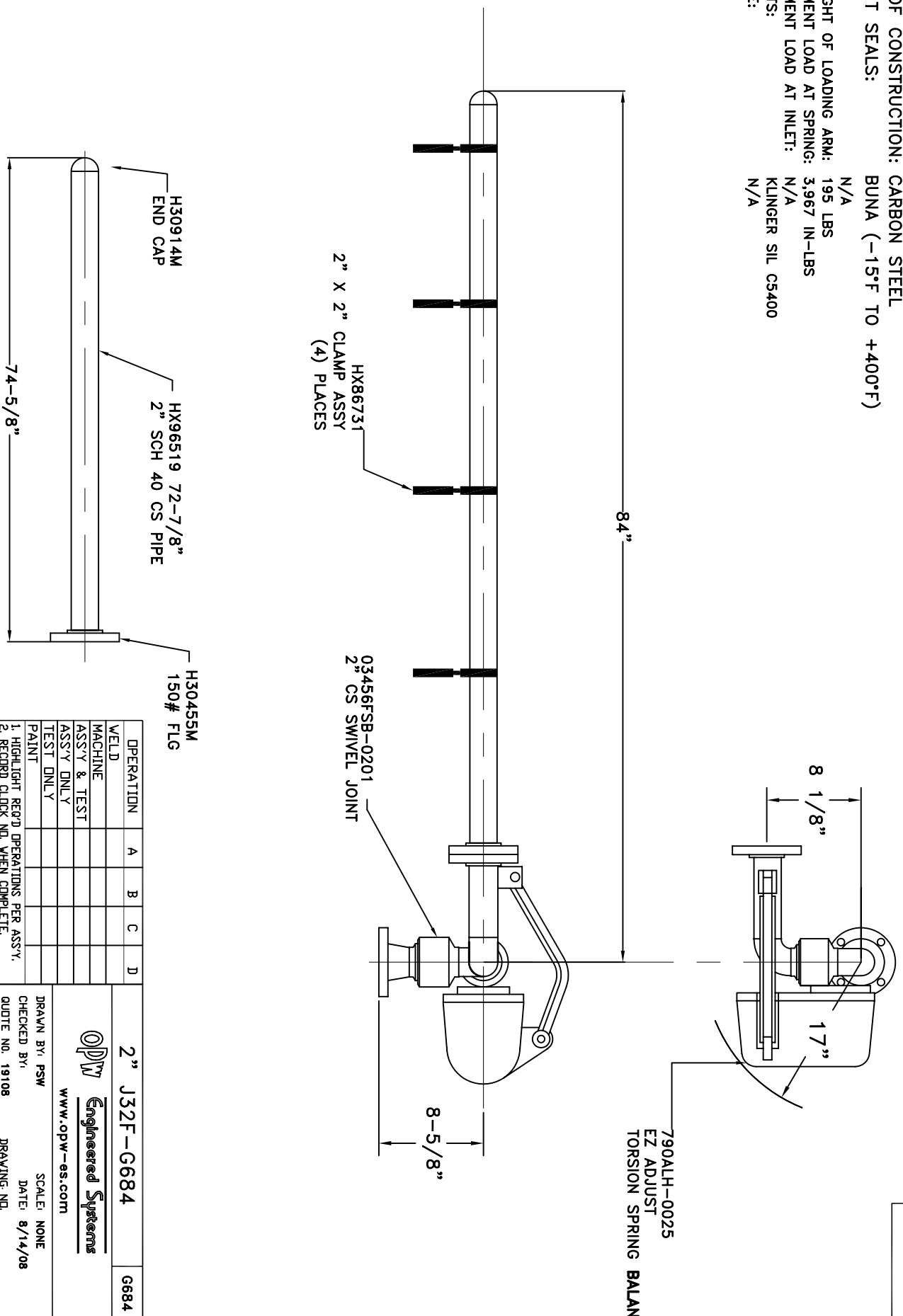



**MATERIALS OF CONSTRUCTION: CARBON STEEL**  
**SWIVEL JOINT SEALS: BUNA (-15°F TO +400°F)**  
**PRODUCT: N/A**  
**ESTIMATED WEIGHT OF LOADING ARM: 195 LBS**  
**ESTIMATED MOMENT LOAD AT SPRING: 3,967 IN-LBS**  
**ESTIMATED MOMENT LOAD AT INLET: N/A**  
**FLANGE GASKETS: N/A**  
**TEST PRESSURE: KLINGER SIL CS400**  
**N/A**



OPERATION	A	B	C	D
WELD				
MACHINE				
ASSY & TEST				
ASSY ONLY				
TEST ONLY				
PAINT				

1. HIGH LIGHT RECD. OPERATIONS PER ASSY.  
 2. RECORD CLOCK NO. WHEN COMPLETE.

**2" J32F-G684** G684  
 **Engineered Systems**  
 www.opw-es.com  
 DRAWN BY: PSW SCALE: NONE  
 CHECKED BY: DATE: 8/14/08  
 QUOTE NO. 19108 DRAWING: ND.