

[illegible]

A

B

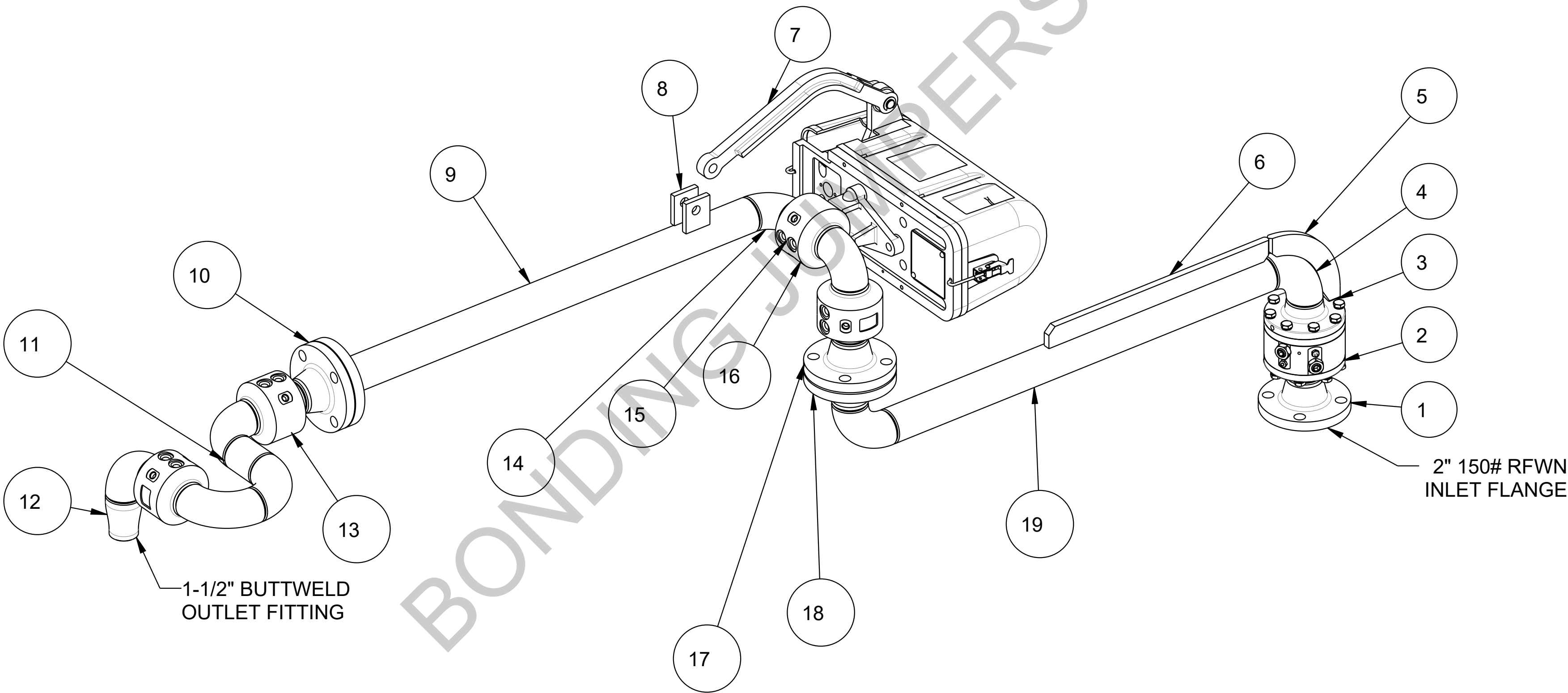
C

D

E

THIS DRAWING IS NOT TO BE SCALED. FOR ADDITIONAL INFORMATION, PLEASE CONTACT OUR ENGINEERING DEPT.

GT32F-R602
41278090



CONFIDENTIAL THIS DOCUMENT CONTAINS INFORMATION WHICH IS PROPRIETARY TO OPW, AND SHOULD BE PROTECTED ACCORDINGLY.				DESCRIPTION: 2"x1-1/2" TOP LOADING ARM, SST, UFRH, PFA/SILICONE			
		SIGNATURES		MO-DA-YR	REV:	PART NUMBER:	
		DRAWN: ANVITH		02/06/2020	-		
		CHECKED: -		-	SIZE:	GT32F-R602	
		MATERIAL: SST		WEIGHT: -	D		
						SCALE: 0.180	SHEET 2 OF 14
						OPW Engineered Systems Lebanon, Ohio 45036 USA 3D GENERATED DRAWING	

A

B

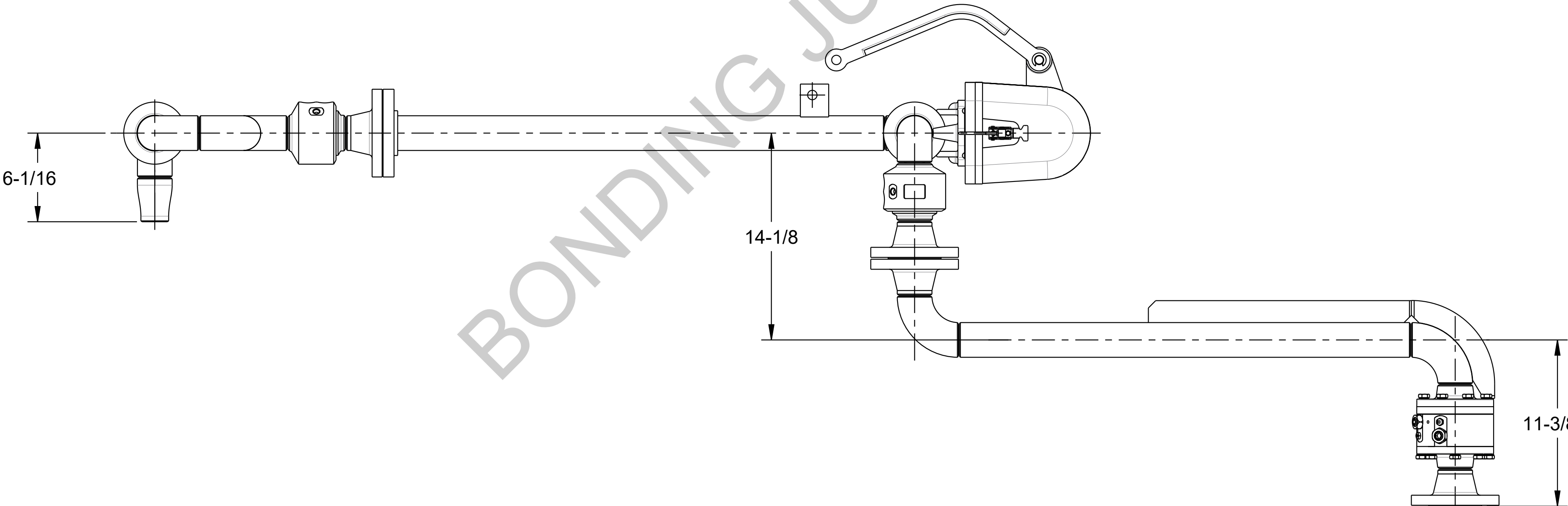
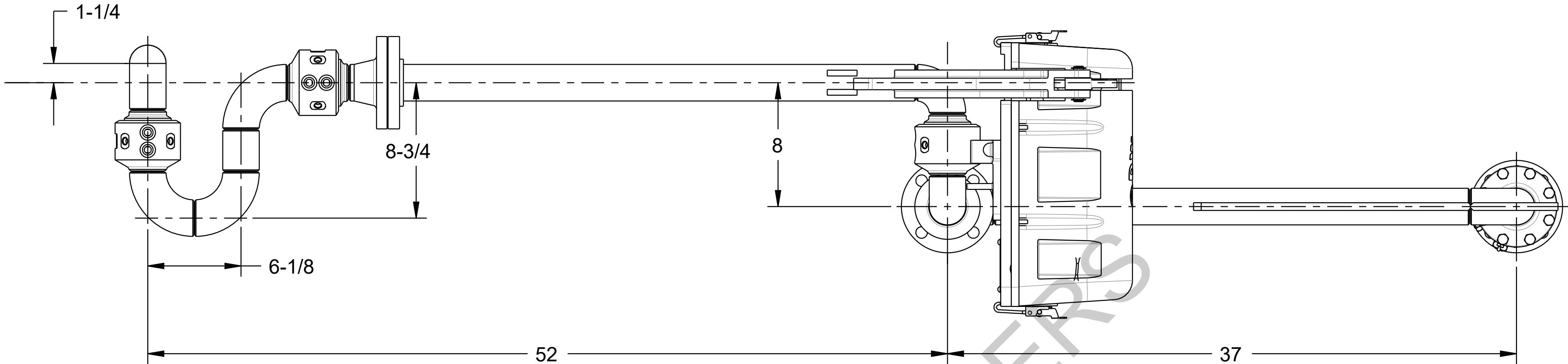
C


D

E

THIS DRAWING IS NOT TO BE SCALED. FOR ADDITIONAL INFORMATION, PLEASE CONTACT OUR ENGINEERING DEPT.

GT32F-R602
41278090



CONFIDENTIAL THIS DOCUMENT CONTAINS INFORMATION WHICH IS PROPRIETARY TO OPW, AND SHOULD BE PROTECTED ACCORDINGLY.				DESCRIPTION: 2"x1-1/2" TOP LOADING ARM, SST, UFRH, PFA/SILICONE			
	SIGNATURES		MO-DA-YR	REV:			 <u>Engineered Systems</u> A DOVE R Resources Company Lebanon, Ohio 45036 USA 3D GENERATED DRAWING
	DRAWN: ANVITH		02/06/2020	-	PART NUMBER:		
	CHECKED: -		-	SIZE:	GT32F-R602		
	MATERIAL: SST		WEIGHT: -	D			
					SCALE: 0.180	SHEET 3 OF 14	