

**MATERIALS OF CONSTRUCTION: 316L STAINLESS STEEL
SWIVEL JOINT SEALS: TFE ENCAPSULATED SILICONE**

PRODUCT:

GLYCERIN

ESTIMATED WEIGHT OF LOADING ARM: 175 LBS (79.4 kg)

ESTIMATED MOMENT LOAD AT SPRING: 1225 IN-LBS

ESTIMATED MOMENT LOAD AT INLET: 5275 IN-LBS

FLANGE GASKETS: KLINGER SIL CS400

TEST PRESSURE: 90 PSI

LOADING ARM NOT DESIGNED FOR ADDITIONAL WEIGHT

LOADING ARM DESIGNED FOR PRODUCT RETENTION

H09005M 8 BOLT

H06092M 8 NUT

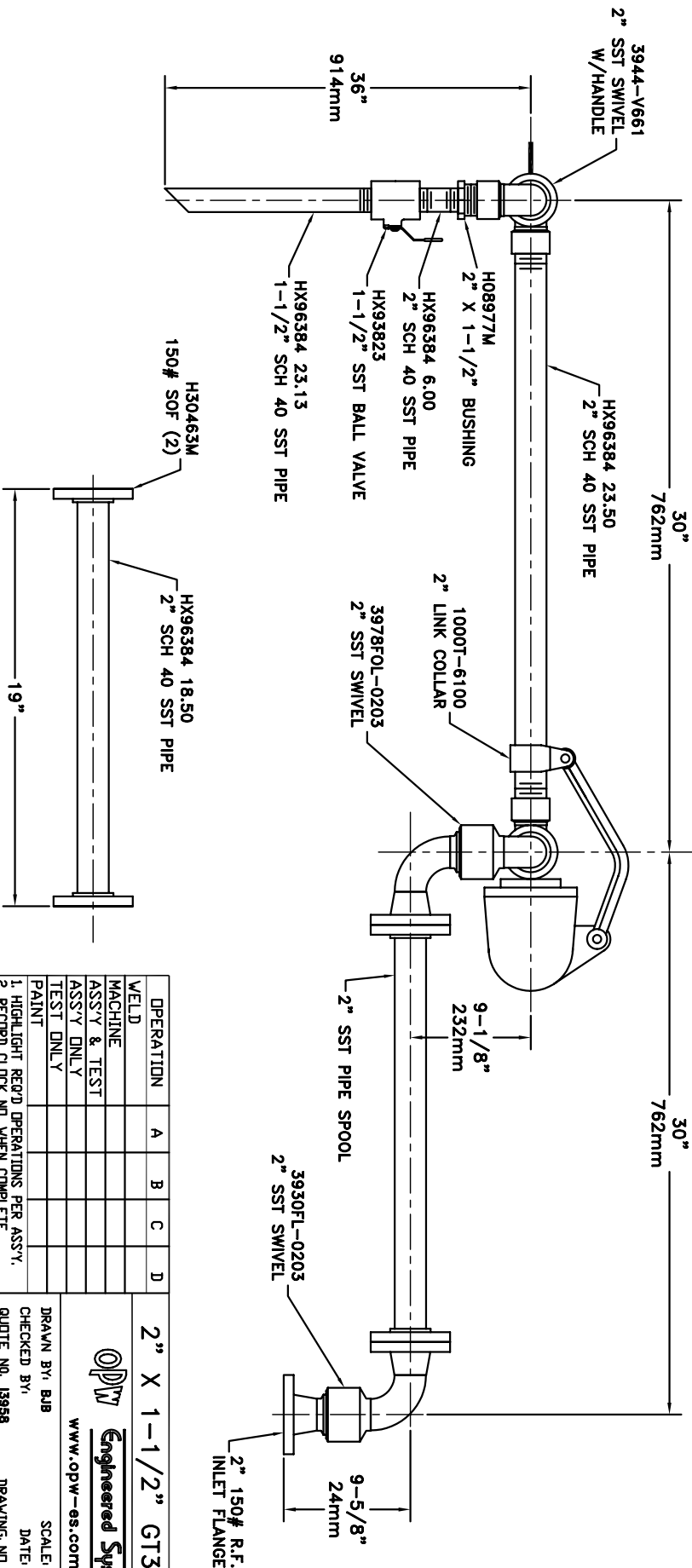
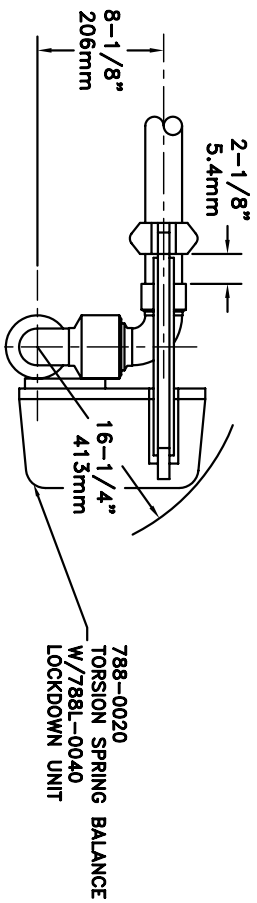
H08979M 8 WASHER

H06090M 2 GASKET

H02209PA 1 INSTRUCTION SHEET

H30446M 1 ALUM NAME PLATE

H30447M 2 SST TIE BANDS



OPERATION	A	B	C	D
WELD				
MACHINE				
ASSY & TEST				
ASSY ONLY				
TEST ONLY				
PAINT				

2" X 1-1/2" GT32F		GS71
DRAWN BY: BUB	SCALE: NONE	
CHECKED BY:	DATE: 7/11/08	
QUOTE NO. 13958	DRAWING NO. SK13958A	

OPW
Engineered Systems
www.opw-es.com