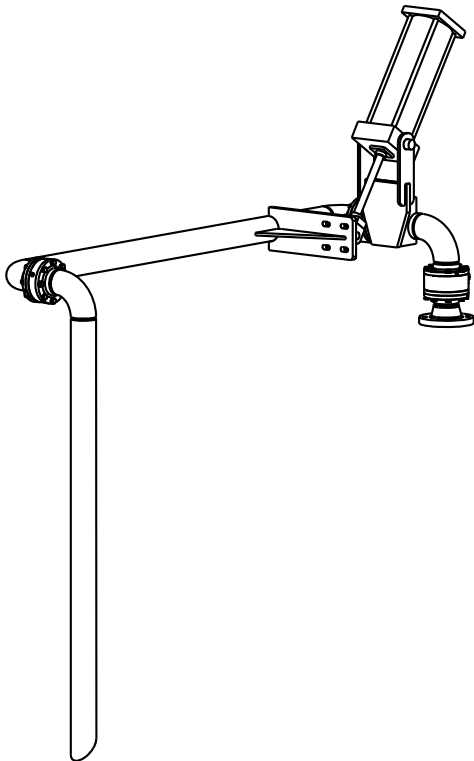


MATERIALS OF CONSTRUCTION	CARBON STEEL
SWIVEL JOINT SEALS	FLUOROCARBON GFLT
PRODUCT	ASPHALT EMULSIONS
ESTIMATED WEIGHT	340 LBS
MOMENT LOAD AT SPRING	8725 IN-LBS
TEST PRESSURE	90 PSI
PRODUCT RETENTION	NO
WEIGHT BY OTHERS	INSULATION & TRACING @ 2.5 LBS/FT
VERTICAL CYLINDER TRAVEL	-35° TO +35°

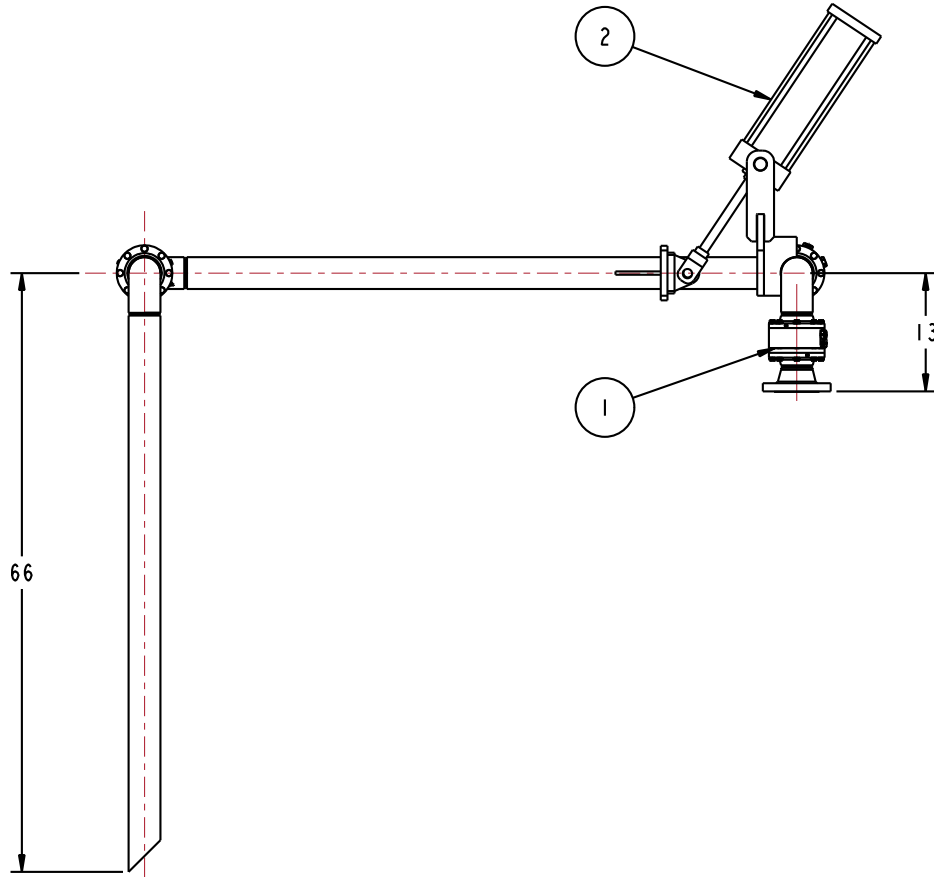
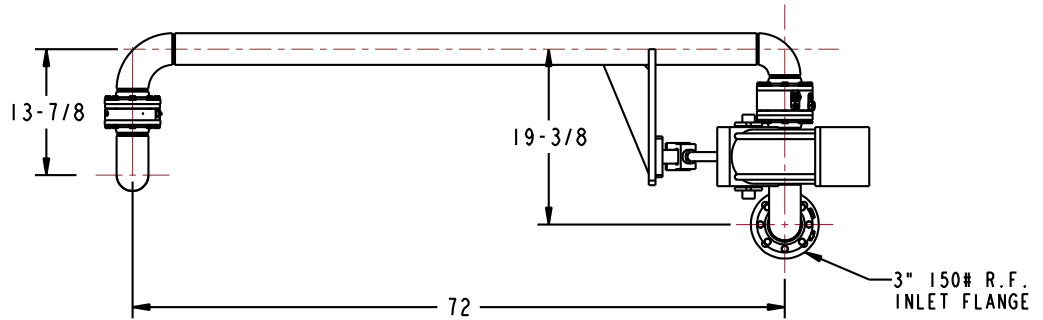
4	1	EA	LADOC-STD	LOADING ARM, NAME TAG AND HARDWARE
3	1	EA	HK-PNEU-CS	HARDWARE KIT, PNEU CYL, CS
2	1	EA	HX98705	PNEUMATIC CYLINDER PACKAGE
1	1	EA	8458FW	3" SWIVEL ASSY, ENDURA DSF, CST
ITEM	QTY	UM	PART NUMBER	DESCRIPTION

2 PNEUMATIC CYLINDER PACKAGE SUPPLIED COMPLETE WITH ASSEMBLED CONTROL BOX AND (2) BUTTON PENDANT CONTROL



THIS DRAWING IS NOT TO BE SCALED. FOR ADDITIONAL INFORMATION, PLEASE CONTACT OUR ENGINEERING DEPT.

REVISIONS					
LTR	ECN #	DESCRIPTION	DRAWN	APPROVED	DATE
-	-	-	-	-	-



CONFIDENTIAL THIS DOCUMENT CONTAINS INFORMATION WHICH IS PROPRIETARY TO OPW, AND SHOULD BE PROTECTED ACCORDINGLY.

DESCRIPTION: 3" TOP LOADING ARM, UFRH, PNEUMATIC

SIGNATURES	MO-DA-YR
DRAWN: BJB	6/30/10
CHECKED:	-
MATERIAL:	WEIGHT:

REV: -	PART NUMBER:
SIZE: D	EJ32F-J080
SCALE: 0.100	SHEET 1 OF 5

OPW Engineered Systems
A **ROBERT** Resources Company
Lebanon, Ohio 45036 USA
3D GENERATED DRAWING