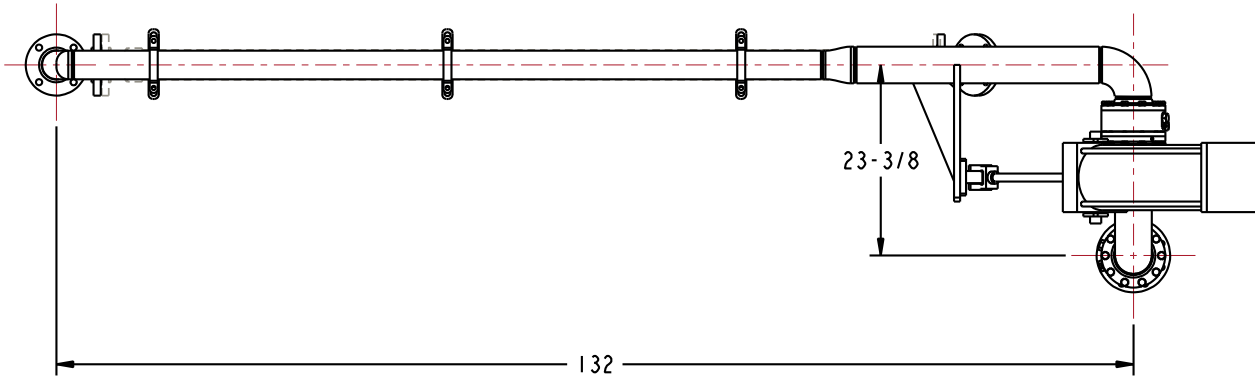


| | |
|---------------------------|--|
| MATERIALS OF CONSTRUCTION | CARBON STEEL |
| SWIVEL JOINT SEALS | BUNA-N |
| PRODUCT | HCL (REF) |
| ESTIMATED WEIGHT | 500 LBS |
| MOMENT LOAD AT SPRING | 30,000 IN-LBS |
| PRODUCT RETENTION | NO |
| VERTICAL CYLINDER TRAVEL | -30° TO +50° |
| WEIGHT BY OTHERS | 3" PTFE LINED PRODUCT HOSE & 3" PTFE LINED DROP HOSE 54" OAL BOTH @ 2.5 LBS/FT 3" BALL VALVE @ 30 LBS |

THIS DRAWING IS NOT TO BE SCALED. FOR ADDITIONAL INFORMATION, PLEASE CONTACT OUR ENGINEERING DEPT.

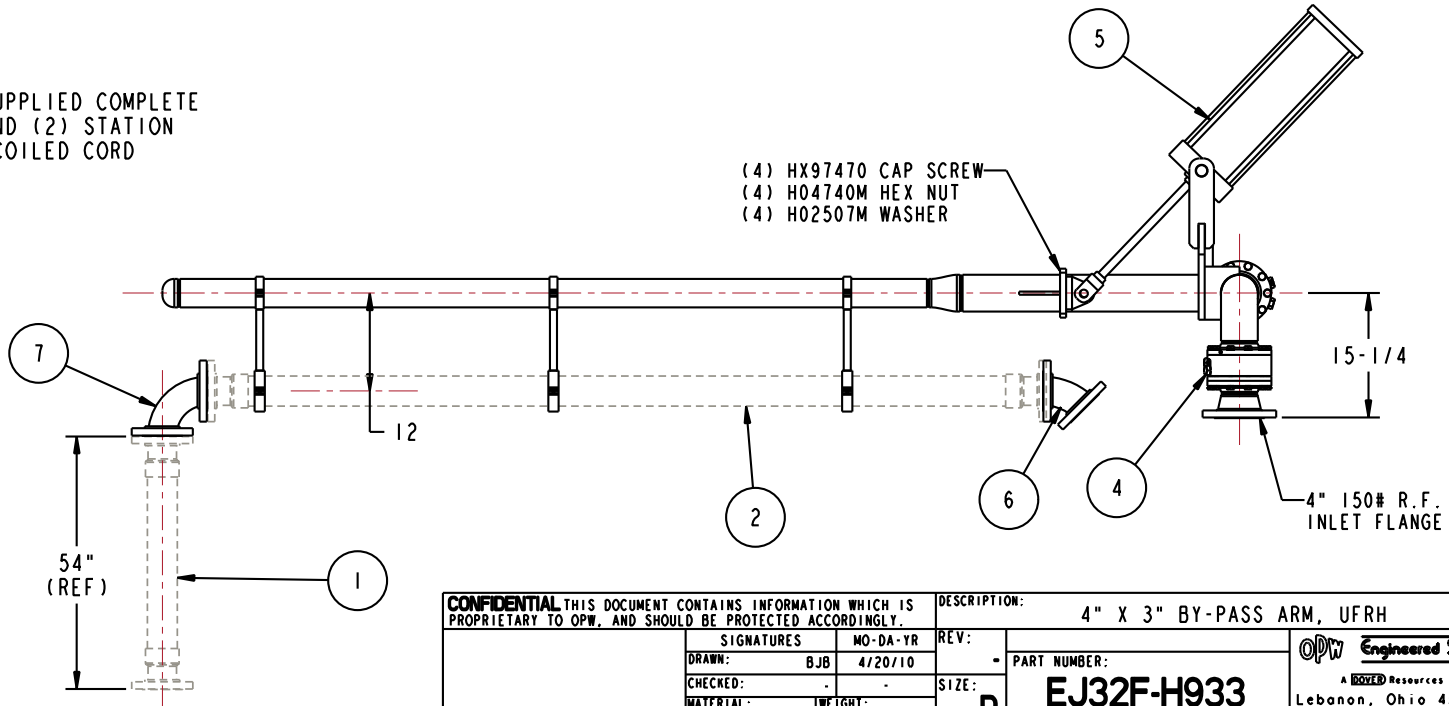
| REVISIONS | | | | |
|-----------|-------|-------------|-------------|--|
| LTR | ECN # | DESCRIPTION | DATE | |
| 7 | 1 | EA | HX98458 | PTFE LINED ELBOW, 90 DEG, CST, 3" |
| 6 | 1 | EA | HX98457 | PTFE LINED ELBOW, 45 DEG, CST, 3" |
| 5 | 1 | EA | HX98455 | PNEUMATIC CYLINDER PACKAGE |
| 4 | 1 | EA | 8458FW | 4" X 3" SWIVEL ASSY, ENDURA DSF, CST |
| 3 | 3 | EA | N/A | 3" X 4" CLAMP ASSEMBLY |
| 2 | 1 | EA | N/A | 3" PTFE LINED PRODUCT HOSE - BY OTHERS |
| 1 | 1 | EA | N/A | 3" PTFE LINED DROP HOSE - BY OTHERS |
| ITEM | QTY | UM | PART NUMBER | DESCRIPTION |

| ITEM | QTY | UM | PART NUMBER | DESCRIPTION |
|------|-----|----|-------------|--|
| 7 | 1 | EA | HX98458 | PTFE LINED ELBOW, 90 DEG, CST, 3" |
| 6 | 1 | EA | HX98457 | PTFE LINED ELBOW, 45 DEG, CST, 3" |
| 5 | 1 | EA | HX98455 | PNEUMATIC CYLINDER PACKAGE |
| 4 | 1 | EA | 8458FW | 4" X 3" SWIVEL ASSY, ENDURA DSF, CST |
| 3 | 3 | EA | N/A | 3" X 4" CLAMP ASSEMBLY |
| 2 | 1 | EA | N/A | 3" PTFE LINED PRODUCT HOSE - BY OTHERS |
| 1 | 1 | EA | N/A | 3" PTFE LINED DROP HOSE - BY OTHERS |



PNEUMATIC CYLINDER PACKAGE SUPPLIED COMPLETE WITH ASSEMBLED CONTROL BOX AND (2) STATION PENDANT CONTROL WITH 20 FT. COILED CORD

- (4) HX97470 CAP SCREW
- (4) H04740M HEX NUT
- (4) H02507M WASHER



CONFIDENTIAL THIS DOCUMENT CONTAINS INFORMATION WHICH IS PROPRIETARY TO OPW, AND SHOULD BE PROTECTED ACCORDINGLY.

| | | | | | |
|------------|---------|----------|------|--|-----------------------------------|
| SIGNATURES | | MO-DA-YR | REV: | DESCRIPTION: 4" X 3" BY-PASS ARM, UFRH | |
| DRAWN: BJB | | 4/20/10 | - | PART NUMBER: | OPW Engineered Systems |
| CHECKED: | | | | SIZE: D | A ROBTEC Resources Company |
| MATERIAL: | WEIGHT: | | | EJ32F-H933 | Lebanon, Ohio 45036 USA |
| | | | | SCALE: 0.090 | SHEET 1 OF 5 |
| | | | | 3D GENERATED DRAWING | |