

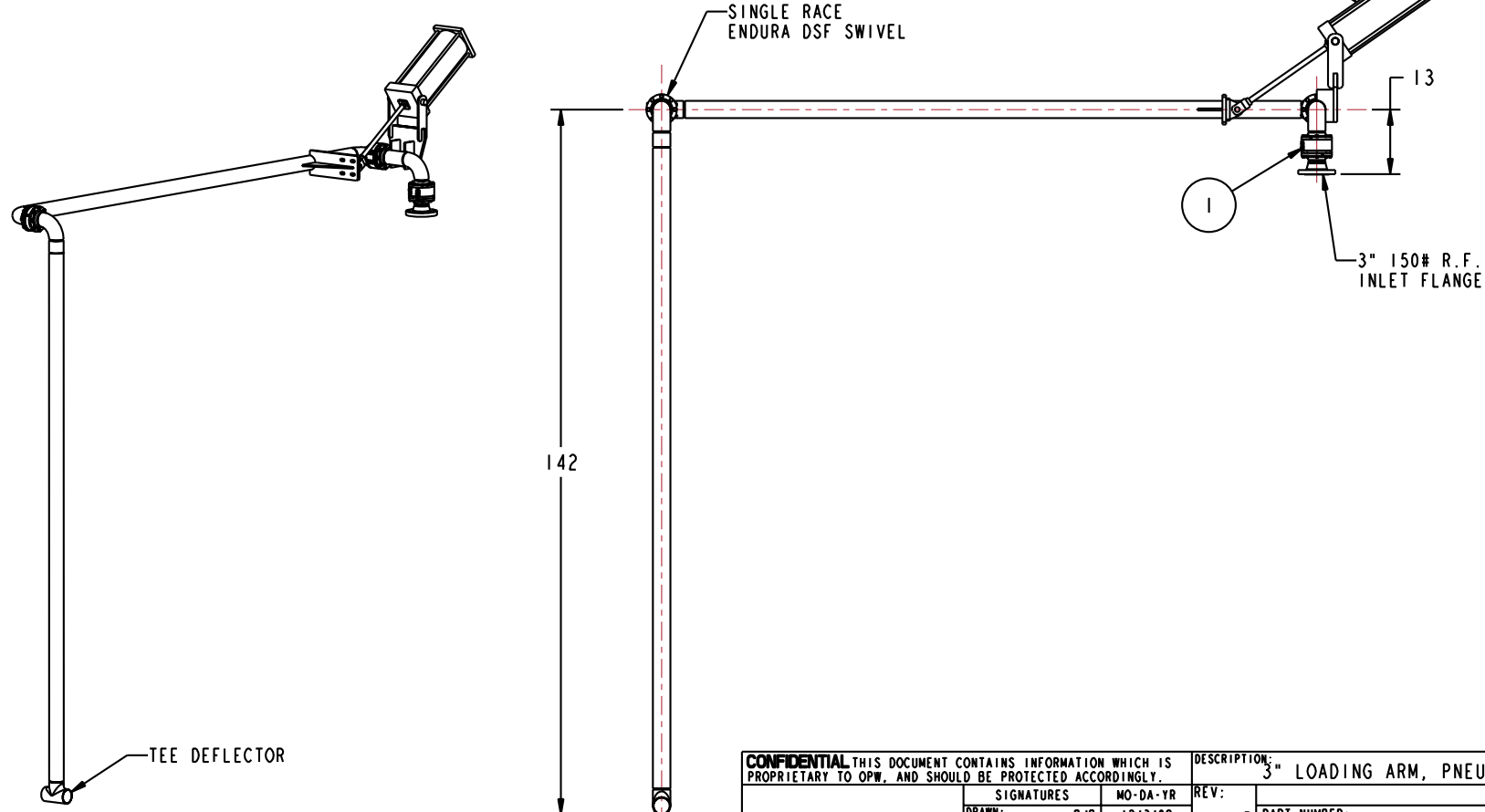
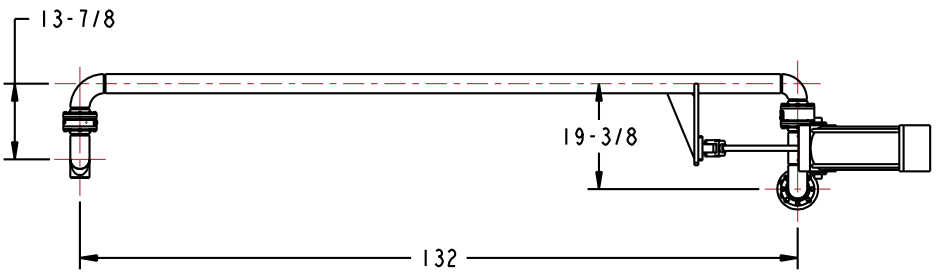
MATERIALS OF CONSTRUCTION	CARBON STEEL
SWIVEL JOINT SEALS	VITON GFLT
PRODUCT	#6 OIL
ESTIMATED WEIGHT	300 LBS
MOMENT LOAD AT SPRING	16,850 IN-LBS
TEST PRESSURE	90 PSI
PRODUCT RETENTION	NO
WEIGHT BY OTHERS	NO
VERTICAL CYLINDER TRAVEL	-25° TO +65°

2	1	EA	HX96955	PNEUMATIC CYLINDER PACKAGE
1	1	EA	STYLE 8450FW	3" SWIVEL ASSY, ENDURA DSF, CST
ITEM	QTY	UM	PART NUMBER	DESCRIPTION

NOTE: PNEUMATIC CYLINDER PACKAGE SUPPLIED COMPLETE WITH PNEUMATIC CYLINDER, (2) BUTTON PENDANT CONTROL CONNECTED BY A 20 FT COILED CABLE, AND FULLY ASSEMBLED CONTROL BOX

THIS DRAWING IS NOT TO BE SCALED. FOR ADDITIONAL INFORMATION, PLEASE CONTACT OUR ENGINEERING DEPT.

REVISIONS					
LTR	ECN #	DESCRIPTION	DRAWN	APPROVED	DATE
-	-	-	-	-	-



CONFIDENTIAL THIS DOCUMENT CONTAINS INFORMATION WHICH IS PROPRIETARY TO OPW, AND SHOULD BE PROTECTED ACCORDINGLY.

DESCRIPTION: 3" LOADING ARM, PNEUMATIC, 100508-03

SIGNATURES		MO-DA-YR	REV:	PART NUMBER:	
DRAWN: BJB		12/3/08	-	EJ32F-H038	
CHECKED:		-	SIZE:	SCALE: 0.060	
MATERIAL:		WEIGHT:	D	SHEET 1 OF 4	

OPW **Engineered Systems**
A **ROBERT** Resources Company
Lebanon, Ohio 45036 USA
3D GENERATED DRAWING