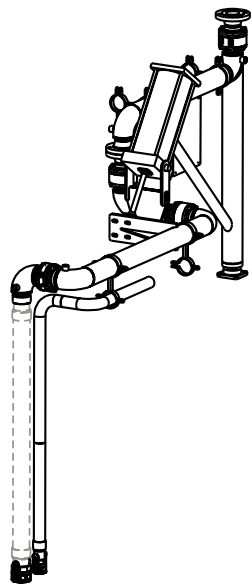
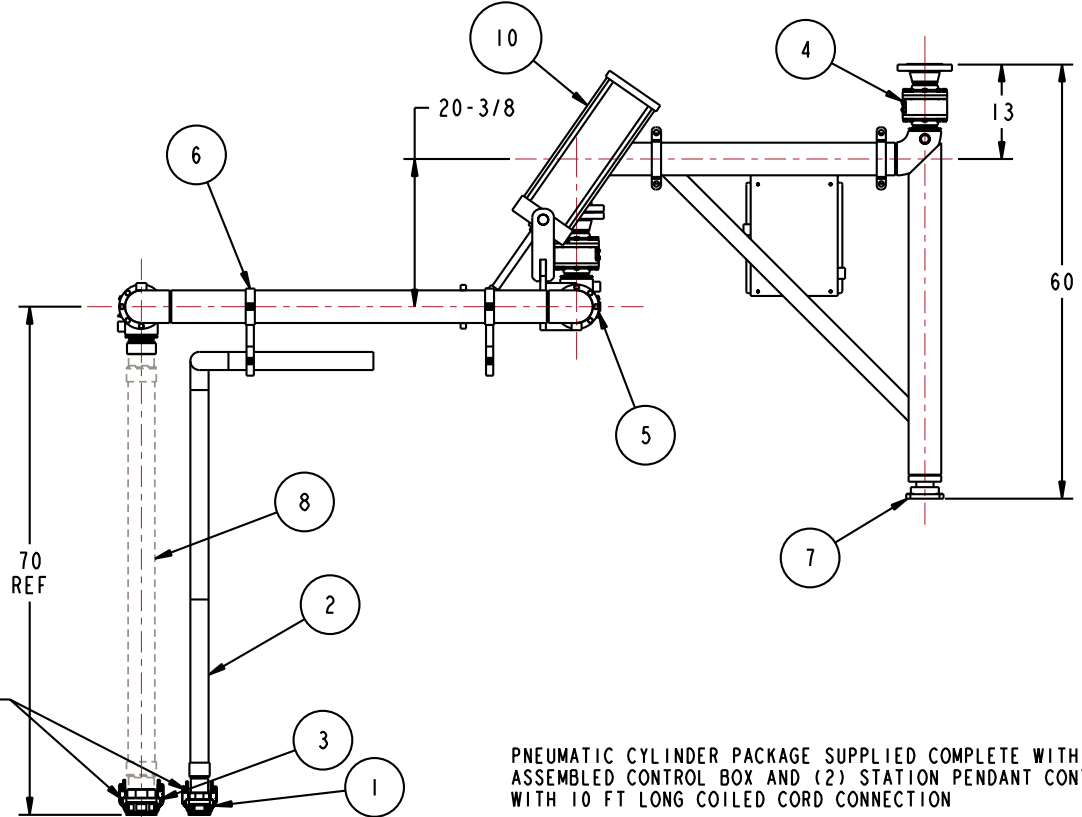
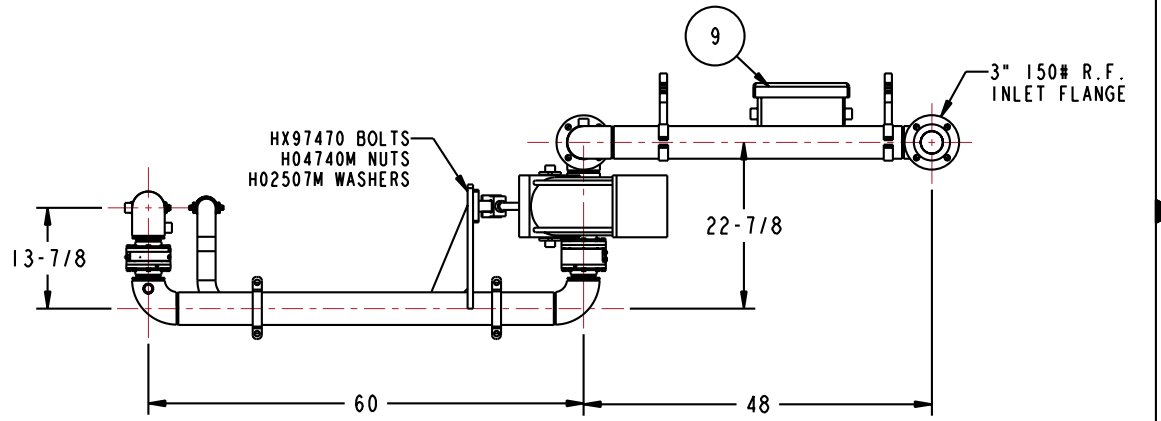


MATERIALS OF CONSTRUCTION	CARBON STEEL
SWIVEL JOINT SEALS	PTFE ENCAPSULATED SILICONE
PRODUCT	MOLTEN SULFUR
ESTIMATED WEIGHT	650 LBS
MOMENT LOAD AT CYLINDER	9800 IN-LBS
MOMENT LOAD AT INLET	34,350 IN-LBS
FLANGE GASKETS	GARLOCK GYLON 3510
TEST PRESSURE	90 PSI
PRODUCT RETENTION	NO
WEIGHT BY OTHERS	INSULATION @ 2.5 LBS/FT DROP HOSE @ 30 LBS MAX
INTERNAL STEAM HOSES	BY OPS - H30913M (3)
EXTERNAL STEAM HOSES	BY OTHERS
ALL STEAM CONNECTIONS	3/4" FNPT
VERTICAL CYLINDER TRAVEL	-35° TO +35°

ITEM	QTY	UM	PART NUMBER	DESCRIPTION
N/A	8	EA	H30911M	3/4" STREET ELBOWS
10	1	EA	HX98258	PNEUMATIC CYLINDER PACKAGE
9	1	EA	N/A	PNEU CYLINDER CONTROL BOX
8	1	EA	N/A	HOSE BY OTHERS @ 30 LBS MAX
7	1	EA	H-30369-M	FLANGE BEARING
6	4	EA	HX83523	3" X 4" CLAMP ASSEMBLY
5	1	EA	8458FWD	3" SWIVEL ASSY, ENDURA DSF, CST, JKT'D
4	1	EA	8430FW	3" SWIVEL ASSY, ENDURA DSF, CST, JKT'D
3	1	EA	733DL-30SB	3" AUTOLOK CPLR, FNPT, SST
2	1	EA	HX98247	2" VAPOR HOSE, 22' AOL, MNPT EA END
1	1	EA	733DL-20SB	2" SST AUTOLOK COUPLER

THIS DRAWING IS NOT TO BE SCALED. FOR ADDITIONAL INFORMATION, PLEASE CONTACT OUR ENGINEERING DEPT.

REVISIONS					
LTR	ECN #	DESCRIPTION	DRAWN	APPROVED	DATE
-	-	-	-	-	-



PNEUMATIC CYLINDER PACKAGE SUPPLIED COMPLETE WITH ASSEMBLED CONTROL BOX AND (2) STATION PENDANT CONTROL WITH 10 FT LONG COILED CORD CONNECTION

CONFIDENTIAL THIS DOCUMENT CONTAINS INFORMATION WHICH IS PROPRIETARY TO OPW, AND SHOULD BE PROTECTED ACCORDINGLY.

DESCRIPTION: 3" LOADING ARM, DFLH, PNEUMATIC, JACKETED

UNLESS OTHERWISE SPECIFIED  
TOLERANCES ON DIMENSIONS  
3 DECIMALS +/- 0.005  
2 DECIMALS +/- 0.015  
1 DECIMAL +/- 0.030  
ANGLES +/- 1/2 DEG  
MACHINED SURFACES 125 RMS MAX

SIGNATURES: MO-DA-YR  
DRAWN: BJB 2/16/10  
CHECKED: - -  
MATERIAL: - -  
WEIGHT: - -

REV: -  
SIZE: D

PART NUMBER:  
**EB33F-H825**

OPW **Engineered Systems**  
A **ROTTED** Resources Company  
Lebanon, Ohio 45036 USA

SCALE: 0.080 SHEET 1 OF 6 3D GENERATED DRAWING