

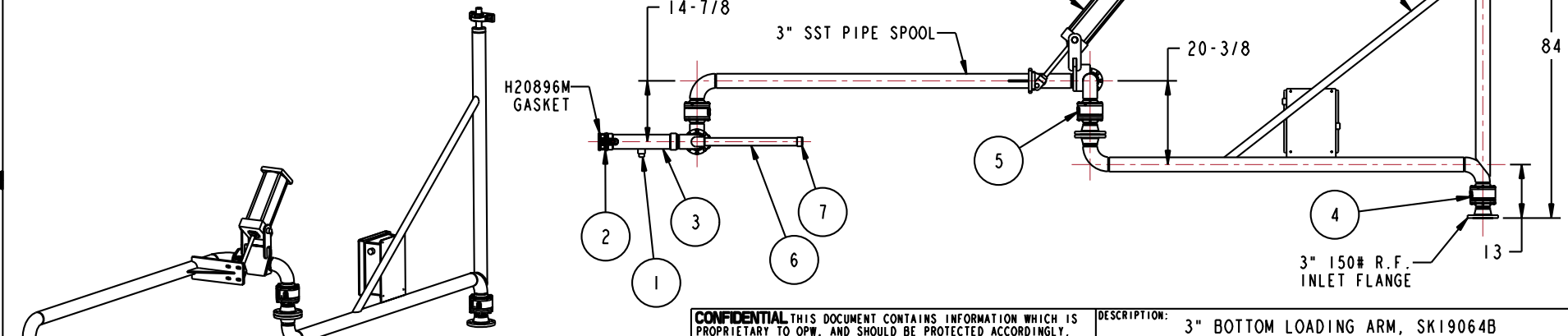
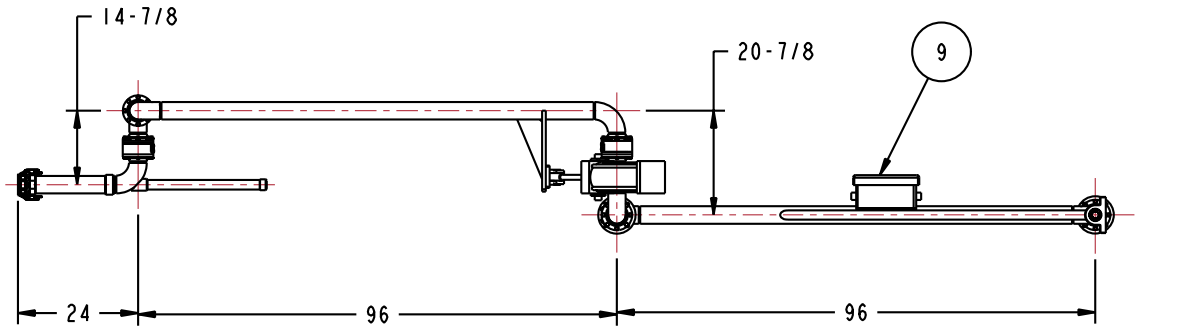
MATERIALS OF CONSTRUCTION	316L STAINLESS STEEL
SWIVEL JOINT SEALS	TFE ENC SILIICONE
PRODUCT	VINSOL
ESTIMATED WEIGHT	600 LBS
MOMENT LOAD AT CYLINDER	11,100 IN-LBS
MOMENT LOAD AT INLET	<20,000 IN-LBS
FLANGE GASKETS	KLINGER SIL C5400
TEST PRESSURE	90 PSI
PRODUCT RETENTION	NO
WEIGHT BY OTHERS	INSULATION @ 2.5 LBS/FT
ALL FLOW PASSAGE WELDS BY OUTSIDE VENDOR	317L PER INSTRUCTION SHEET HX96548PA
VERTICAL CYLINDER TRAVEL	±25°

THIS DRAWING IS NOT TO BE SCALED. FOR ADDITIONAL INFORMATION, PLEASE CONTACT OUR ENGINEERING DEPT.

REVISIONS					
LTR	ECN #	DESCRIPTION	DRAWN	APPROVED	DATE
-	-	-	-	-	-

10	I	EA	HX96542	PNEUMATIC CYLINDER PACKAGE
9	I	EA	N/A	PNEU CYLINDER CONTROL BOX
8	I	EA	H-01180-M	PILLOW BLOCK BEARING
7	I	EA	H-03004-M	CAP, PIPE, CST, 1-1/2"
6	I	FT	HX96541	BALANCE ARM
5	I	EA	8958FW-G709	3" SWIVEL ASSY, ENDURA DSF, SST
4	I	EA	8930FW-G708	3" SWIVEL ASSY, ENDURA DSF, SST
3	I	EA	N/A	3" SST PIPE SPOOL
2	I	EA	733DL-30SB	3" AUTOLOK CPLR, FNPT, SST
1	I	FT	HX86139ND	1" SST PIPE NIPPLE
ITEM	QTY	UM	PART NUMBER	DESCRIPTION

- H30315M 4 BOLT
- H06092M 4 NUT
- H08979M 4 WASHER
- H04819M 1 GASKET
- H02209PA 1 INSTRUCTION SHEET
- H30446M 1 ALUM NAME PLATE
- H30447M 2 SST TIE BANDS



CONFIDENTIAL THIS DOCUMENT CONTAINS INFORMATION WHICH IS PROPRIETARY TO OPW, AND SHOULD BE PROTECTED ACCORDINGLY.

DESCRIPTION: 3" BOTTOM LOADING ARM, SKI9064B

UNLESS OTHERWISE SPECIFIED  
 TOLERANCES ON DIMENSIONS  
 3 DECIMALS +/- 0.005  
 2 DECIMALS +/- 0.015  
 1 DECIMAL +/- 0.030  
 ANGLES +/- 1/2 DEG  
 MACHINED SURFACES 125 RMS MAX

SIGNATURES		MO-DA-YR
DRAWN:	BJB	8/19/08
CHECKED:	-	-
MATERIAL:	WEIGHT:	-

REV:	-
SIZE:	D

PART NUMBER:	<b>EB32F-G707</b>
SCALE:	0.055

**OPW** **Engineered Systems**  
 A **ROBERT** Resources Company  
 Lebanon, Ohio 45036 USA  
 3D GENERATED DRAWING