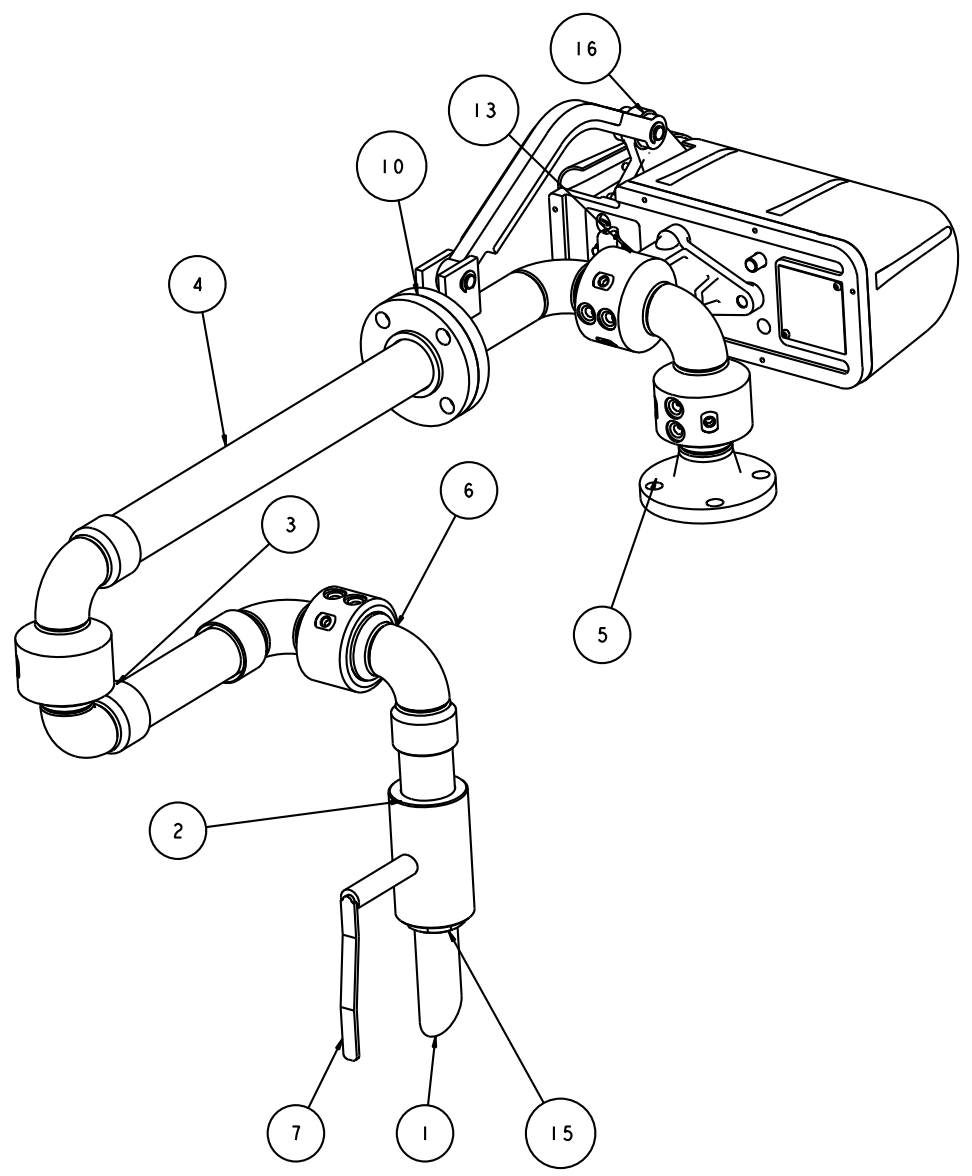


OPW QUOTE FILE NUMBER	23013
MATERIALS OF CONSTRUCTION	STAINLESS STEEL
SWIVEL JOINT SEALS	PFA/SILICONE (-50°F TO 500°F)
PRODUCT	AUTOMATIVE FLUIDS
ESTIMATED WEIGHT	173 LBS
MOMENT LOAD AT SPRING	1,950 IN-LBS
MOMENT LOAD AT INLET	N/A
FLANGE GASKETS	KLINGER SIL C5400
TEST PRESSURE	90 PSI
PRODUCT RETENTION	YES, UP TO THE BALL VALVE
WEIGHT BY OTHERS	NO
X-RAY	5%
BONDING JUMPERS	YES

THIS DRAWING IS NOT TO BE SCALED. FOR ADDITIONAL INFORMATION, PLEASE CONTACT OUR ENGINEERING DEPT.			REVISIONS			
LTR	ECN #	DESCRIPTION	DRAWN	APPROVED	DATE	



16	1	EA	788-0020		RIGHT HAND EZ ADJUST SPRING BALANCE
15	1	EA	H-08977-M		REDUCER BUSHING, 2" X 1.5", SST
14	1	EA	H32341M		RADIOGRAPHIC INSPECTION REQUIRED
13	1	EA	788L-0040		LOCKDOWN UNIT
12	1	EA	LADOC-STD		LOADING ARM, NAME TAG AND HARDWARE
11	4	EA	LSK-3900-0203		LOADER SWIVEL KIT, 3900, PTFE, 2"
10	1	EA	H30463M		FLG, 150, RFSO, SST, 2"
9	1	EA	FHK-150-02-SS		FLANGE HARDWARE KIT, 150LB, SS, 2"
8	4	EA	H32318		BONDING JUMPER, 34 & 39 SWIVELS
7	1	EA	HX95935		BALL VALVE, SST, STD PORT, FNPT, 2"
6	2	EA	3940-0200		2" SWIVEL, SST, FNPT X FNPT
5	1	EA	3958FSB-0200		2" SWIVEL, SST, 150# X 150#, UFRH
4	1	EA	HX104215	23.124	2" SST SCH40 PIPE
3	1	EA	HX104215	8.374	2" SST SCH40 PIPE
2	1	EA	HX104215	3.750	2" SST SCH40 PIPE
1	1	EA	HX104215	6.000	1-1/2" SST SCH40 PIPE
ITEM	QTY	UM	PART NUMBER	LENGTH	DESCRIPTION

CONFIDENTIAL THIS DOCUMENT CONTAINS INFORMATION WHICH IS PROPRIETARY TO OPW, AND SHOULD BE PROTECTED ACCORDINGLY.			DESCRIPTION: 2" X 1 1/2" UFRH LOADING ARM	
SIGNATURES		MO-DA-YR	REV:	PART NUMBER:
DRAWN: RAVI		10/08/2014	-	C32F-M126
CHECKED:		-	SIZE:	SCALE: 0.250
MATERIAL:		WEIGHT:	D	SHEET 1 OF 3
				3D GENERATED DRAWING

A

B

C

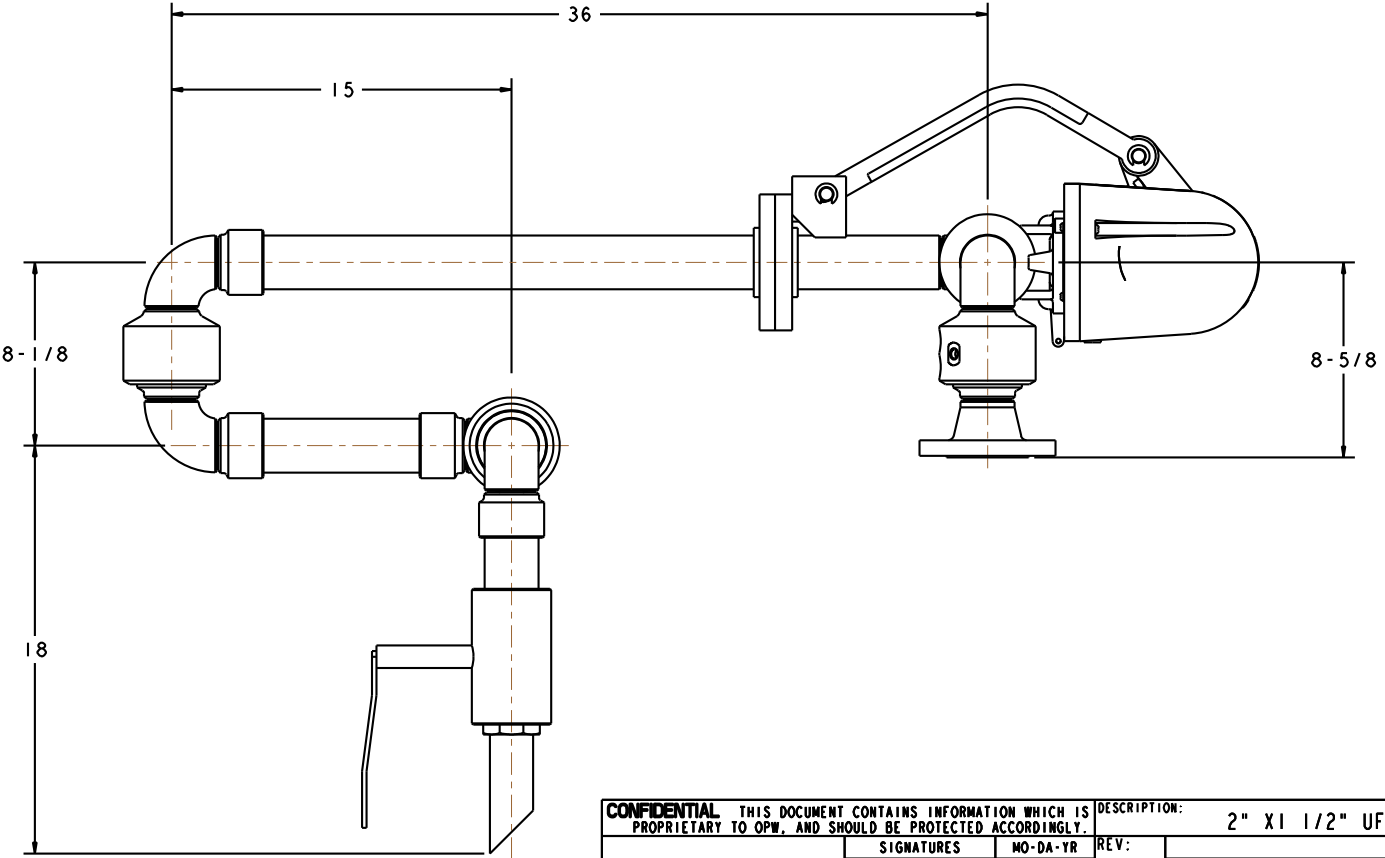
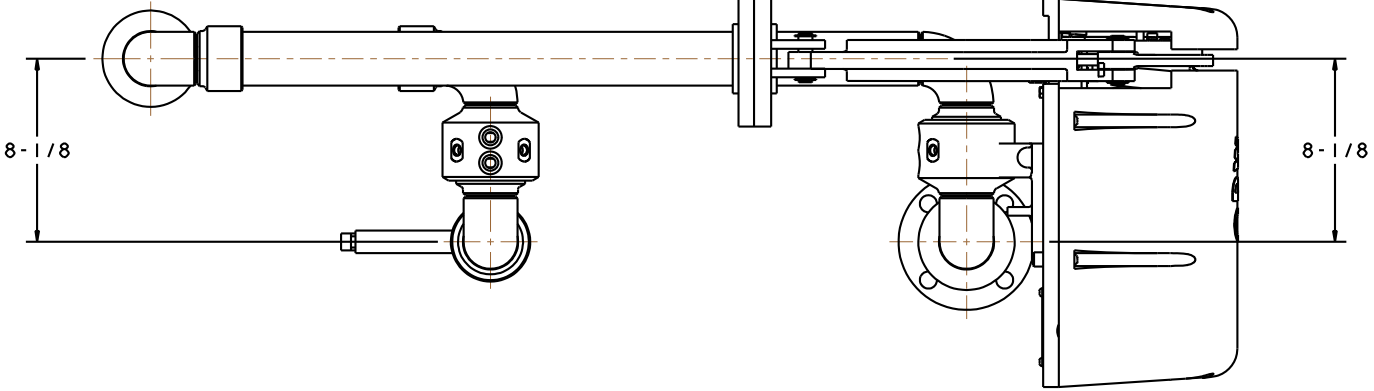
D

E

THIS DRAWING IS NOT TO BE SCALED. FOR ADDITIONAL INFORMATION, PLEASE CONTACT OUR ENGINEERING DEPT.

REVISIONS

LTR	ECN #	DESCRIPTION	DRAWN	APPROVED	DATE
-	-	-	-	-	-



CONFIDENTIAL THIS DOCUMENT CONTAINS INFORMATION WHICH IS PROPRIETARY TO OPW, AND SHOULD BE PROTECTED ACCORDINGLY.

SIGNATURES		MO-DA-YR	REV:	DESCRIPTION: 2" X 1 1/2" UFRH LOADING ARM	
DRAWN:	RAVI	10/08/2014	-	PART NUMBER:	
CHECKED:	-	-	SIZE:	C32F-M126	
MATERIAL:	-	-	D	SCALE: 0.250	
WEIGHT:	-	-		SHEET 2 OF 3	

OPW Engineered Systems
PART OF OPW FLUID TRANSFER GROUP
3D GENERATED DRAWING

A

B

C

D

E

A

B

C

D

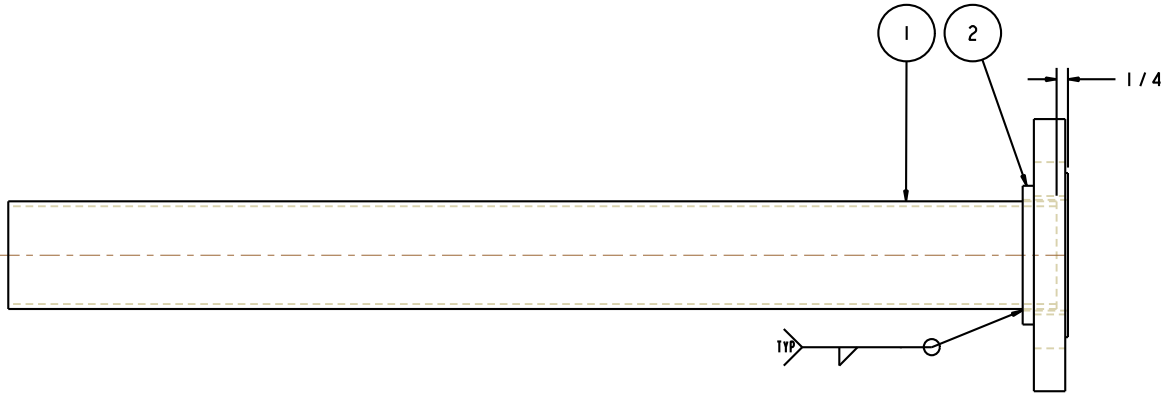
E

THIS DRAWING IS NOT TO BE SCALED. FOR ADDITIONAL INFORMATION, PLEASE CONTACT OUR ENGINEERING DEPT.

REVISIONS

LTR	ECN #	DESCRIPTION	DRAWN	APPROVED	DATE
-	-	-	-	-	-

2	1	EA	H30463M		FLG, 150, RFSO, SST, 2"
1	1	EA	HX104215	23.124	2" SST SCH40 PIPE
ITEM	QTY	UM	PART NUMBER		DESCRIPTION



NOTES:

1. WELDING PER OPW WELD SPECIFICATIONS. REFERENCE APPLICABLE WELD SPECIFICATIONS PER COMPONENT.
2. COMPONENT FACE(S) PERPENDICULAR TO CENTER LINE(S) $\pm .5^\circ$
3. ALL FLANGE BOLT HOLES TO STRADDLE CENTER LINE(S)
4. PROTECT FLANGE FACE(S) AND MACHINED SURFACES WHEN WELDING
5. ALIGN COMPONENTS AS SHOWN $\pm 2^\circ$.
6. CLEAN ALL WELDS USING A STAINLESS STEEL ONLY WIRE BRUSH.

CONFIDENTIAL THIS DOCUMENT CONTAINS INFORMATION WHICH IS PROPRIETARY TO OPW, AND SHOULD BE PROTECTED ACCORDINGLY.

DESCRIPTION: 2" X 1 1/2" UFRH LOADING ARM

SIGNATURES		MO-DA-YR	REV:	PART NUMBER:	 <small>PART OF OPW FLUID TRANSFER GROUP</small>
DRAWN:	RAVI	10/08/2014	-	C32F-M126	
CHECKED:	-	-	SIZE:	D	
MATERIAL:	-	-	WEIGHT:	-	
SCALE: 0.500			SHEET 3 OF 3		3D GENERATED DRAWING

A

B

C

D

E